

Meet the

Marin Municipal Water District



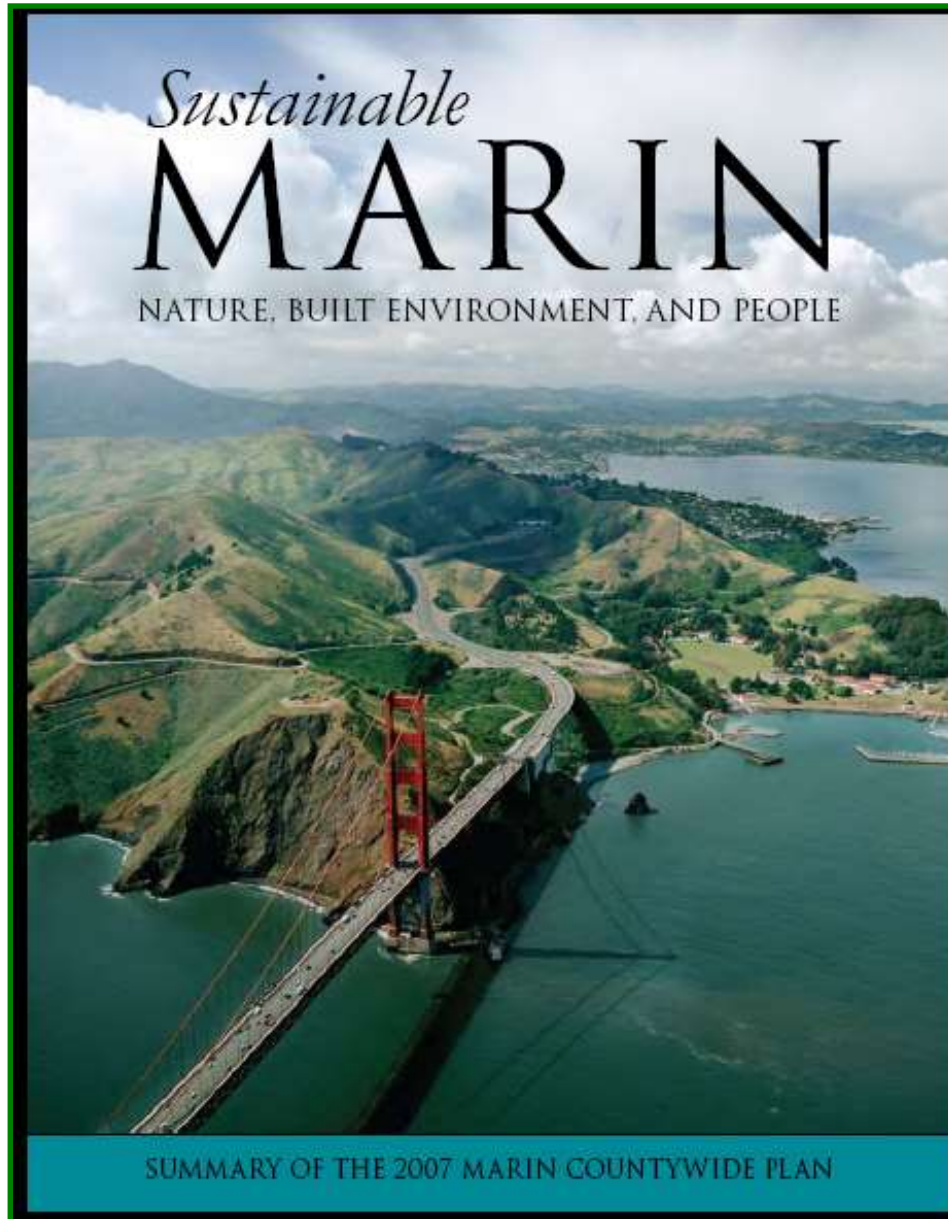
MARIN MUNICIPAL
WATER DISTRICT





MARIN MUNICIPAL
WATER DISTRICT

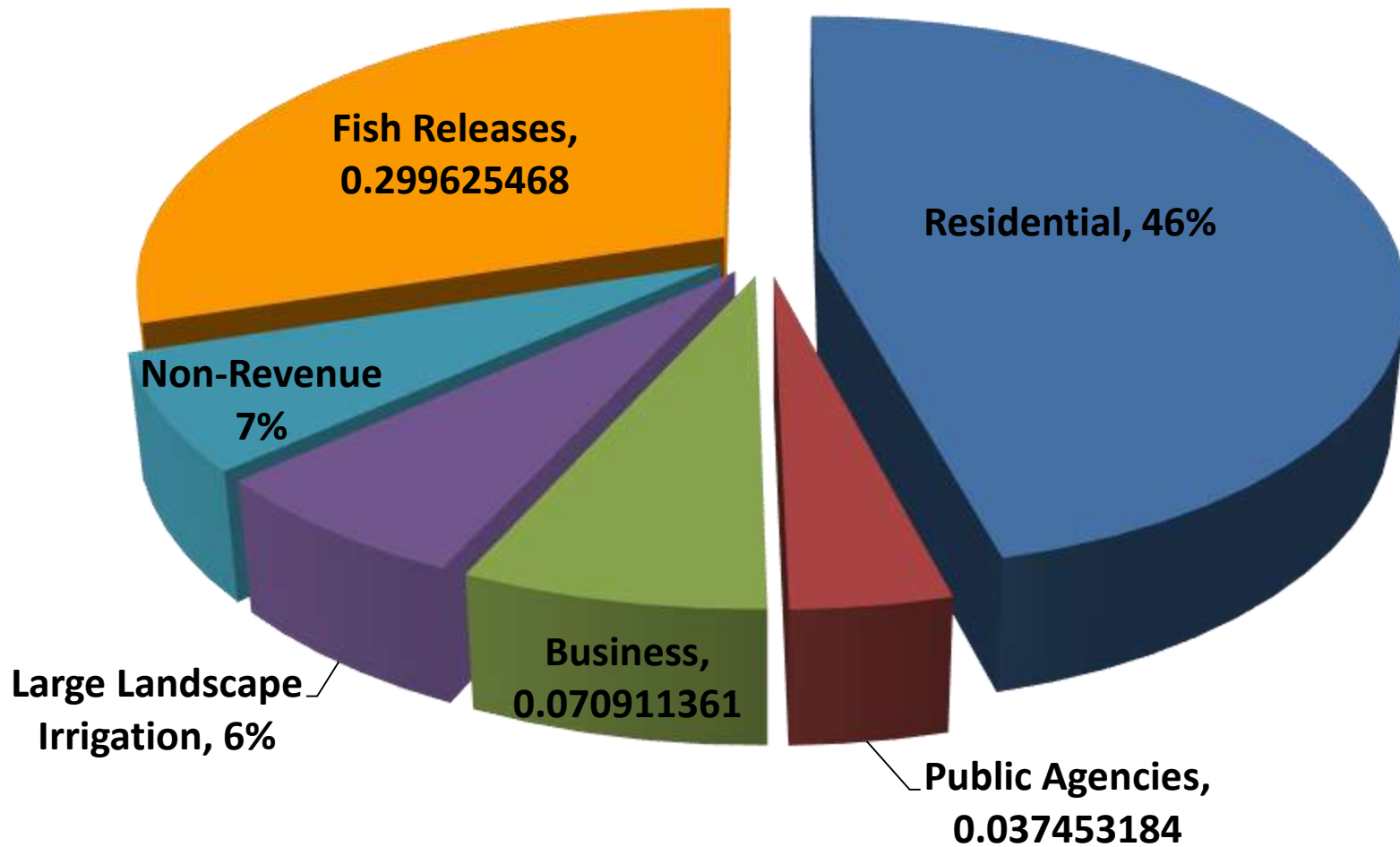
Cross the Bridge



Where We Get Our Water



Where Our Water Goes

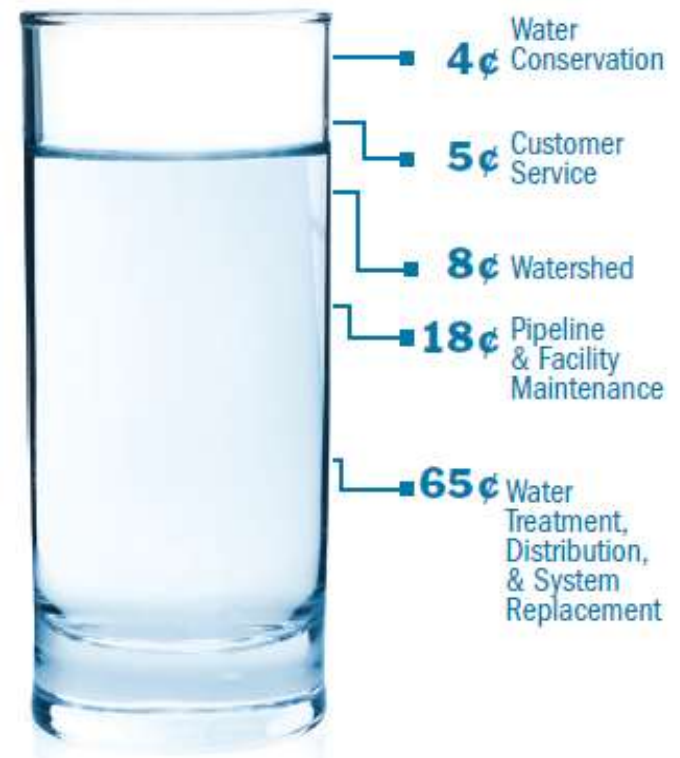


Revenue and Expenses

Where does each dollar come from?



Where does each dollar go?





1870-1912

In the late 1800s, there were 26 privately owned water companies in Marin.



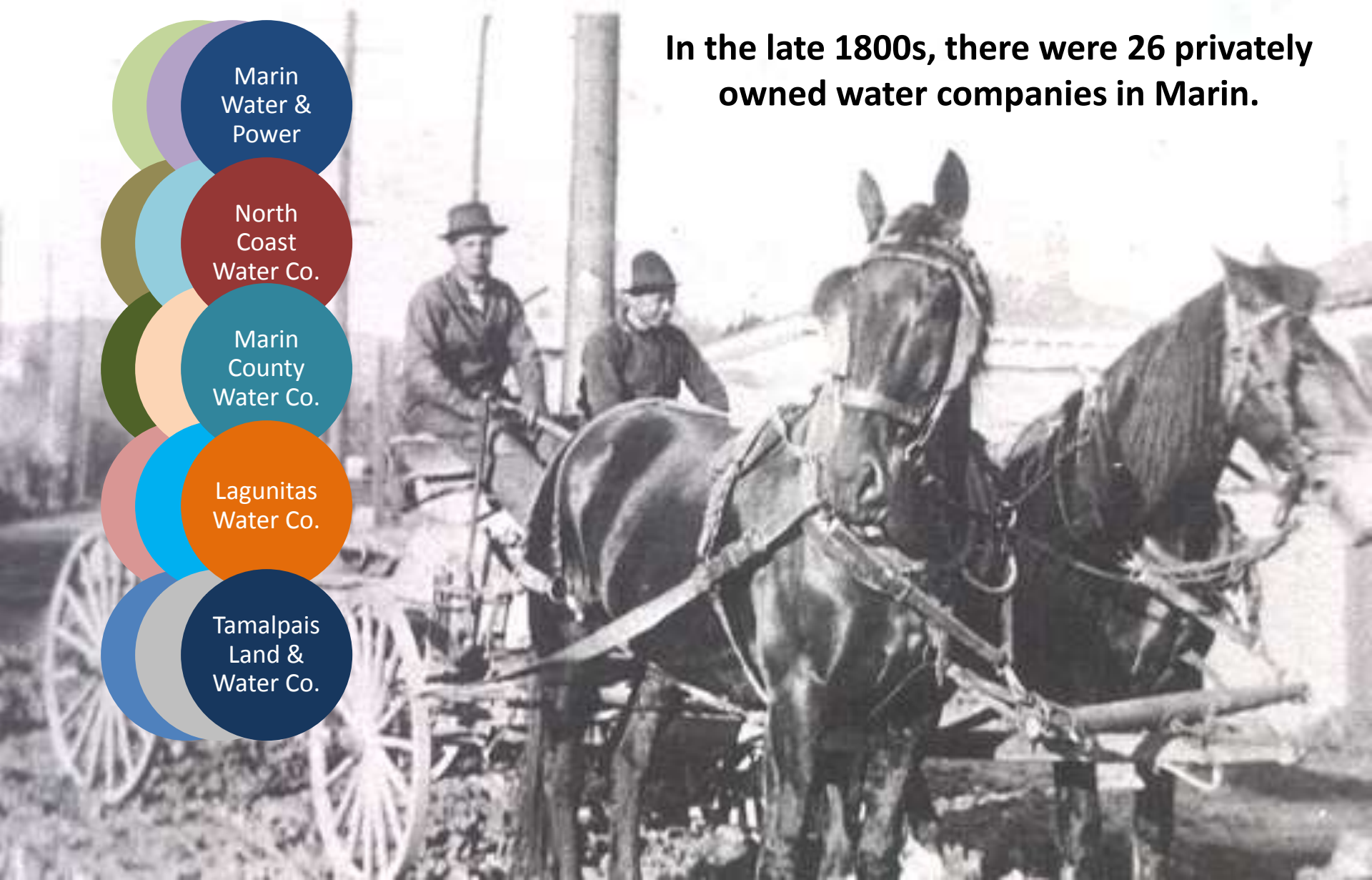
Marin
Water &
Power

North
Coast
Water Co.

Marin
County
Water Co.

Lagunitas
Water Co.

Tamalpais
Land &
Water Co.





**Water
Shortage**

This question can be solved quickly if
the public will take it in hand.

**A MASS
MEETING**

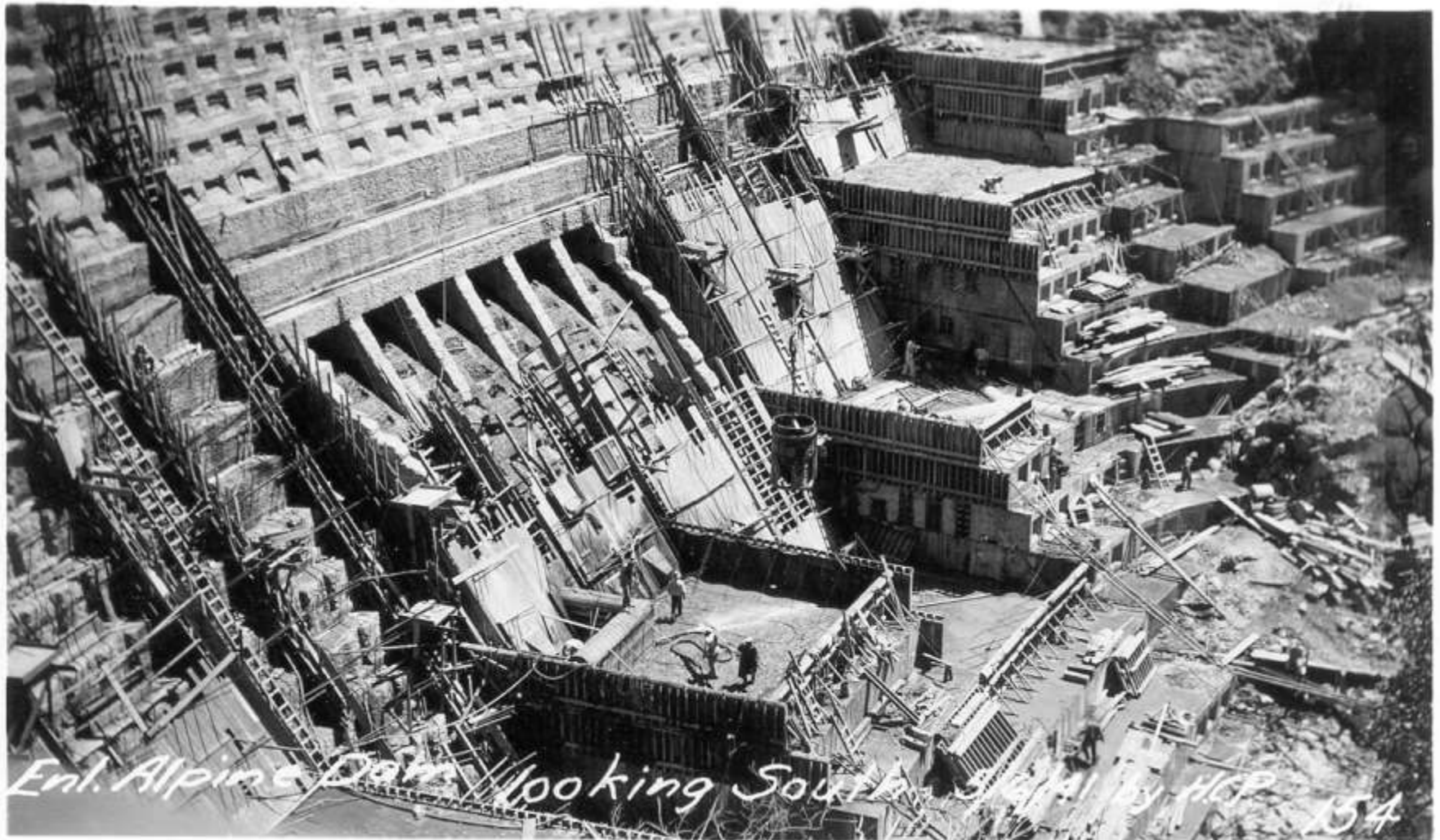
will be held at THE ARMORY
Entrance 4th Street, opposite Court House

San Rafael, Friday, August 25, '16

Come!

This meeting is for the purpose of get-
ting a solution of the problem and not
for controversy.

“You are encouraged to use more water because the completion of the new Alpine Dam has placed unlimited water at your disposal”

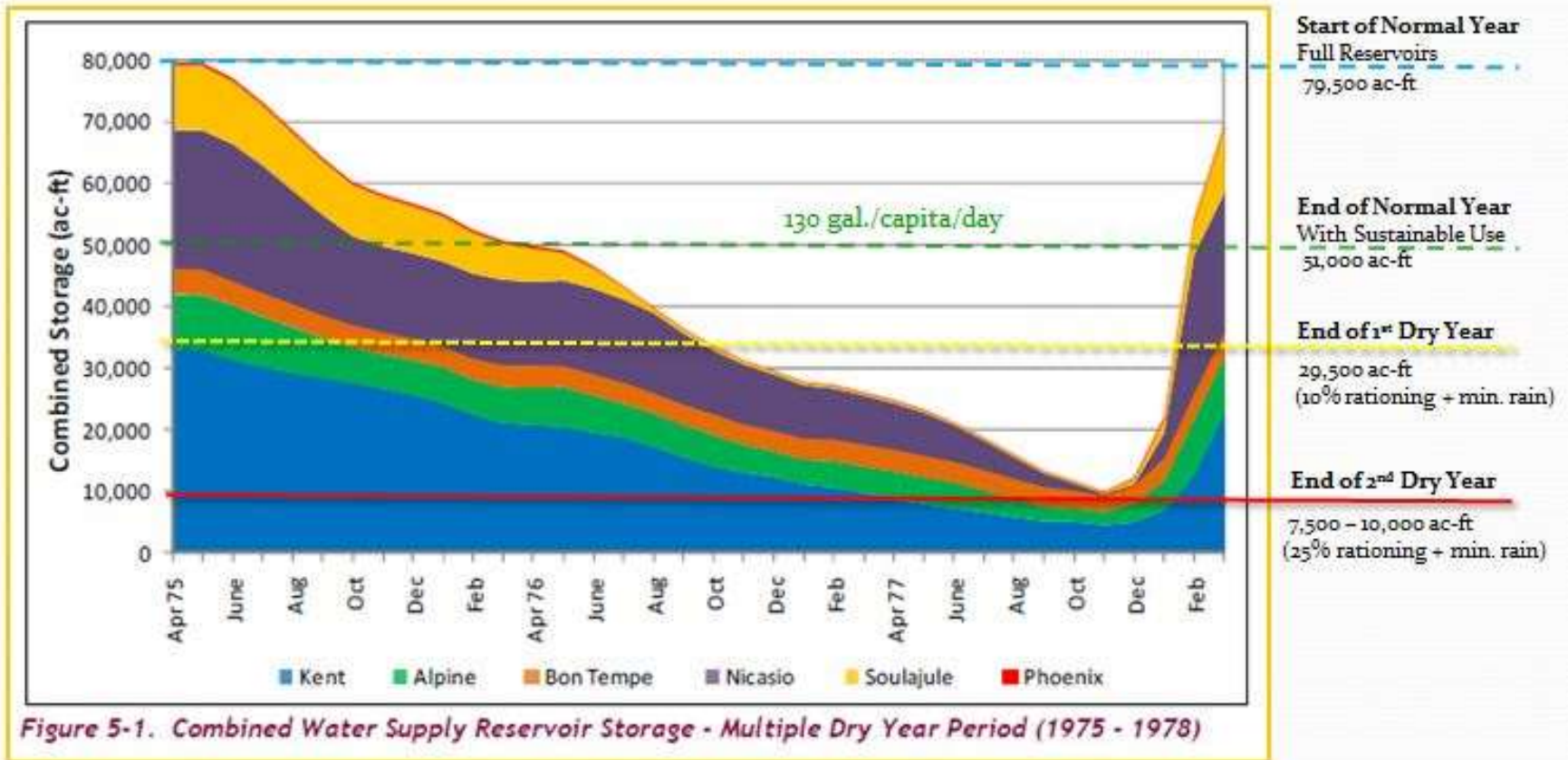




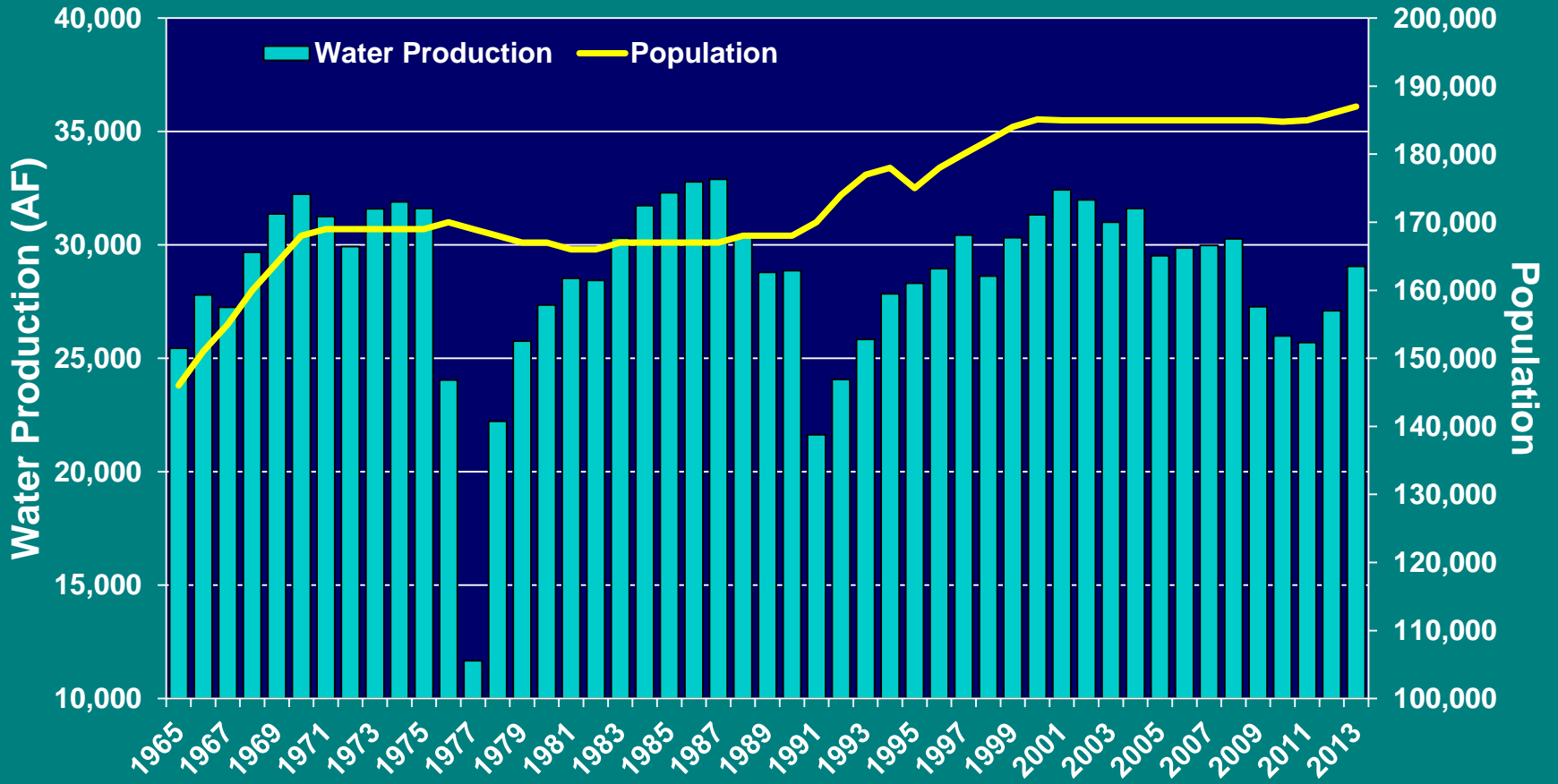


Drought of Record 1975-78

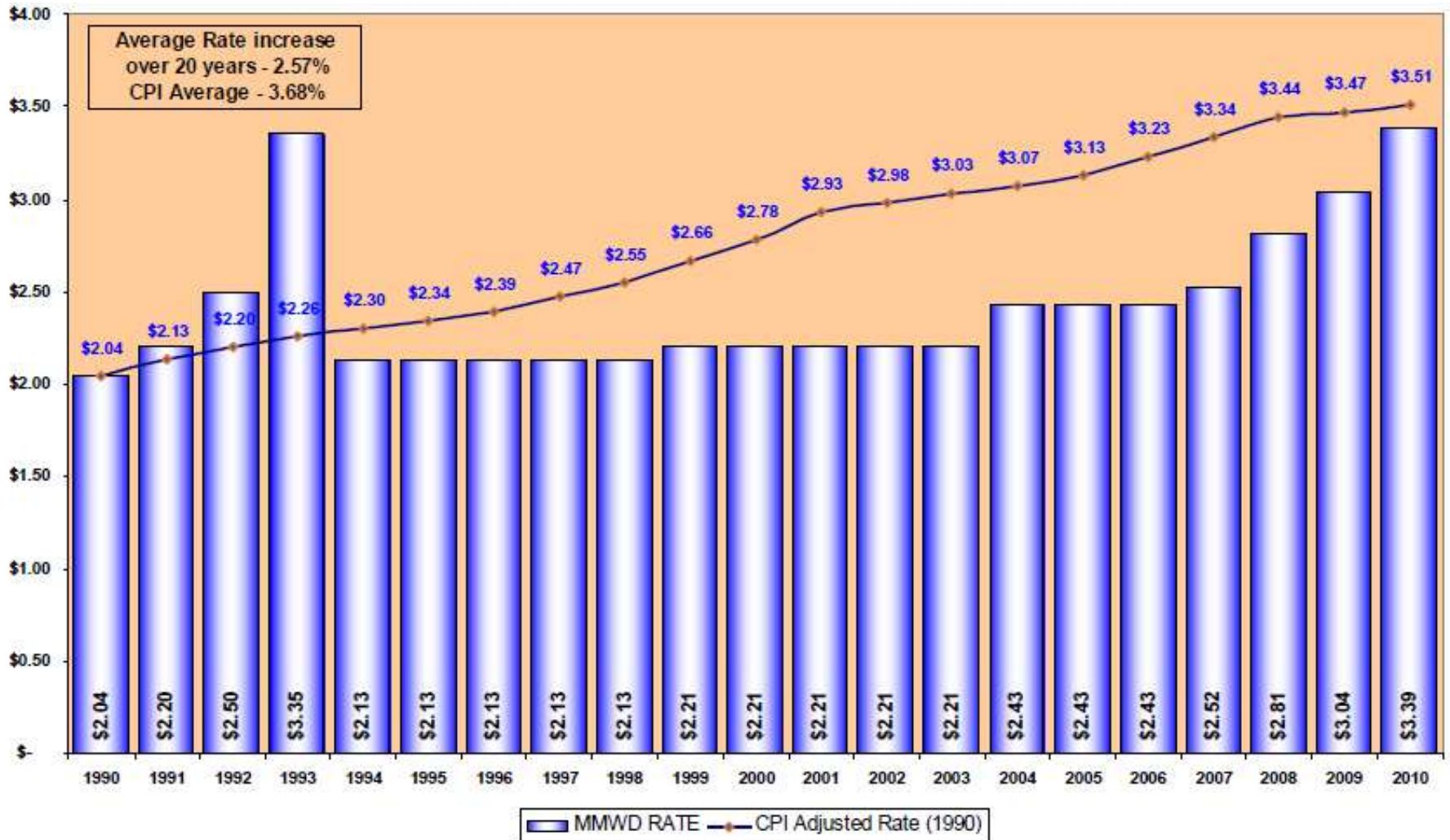
Water Supply: Worst-case reservoir drawdown after 2 dry years



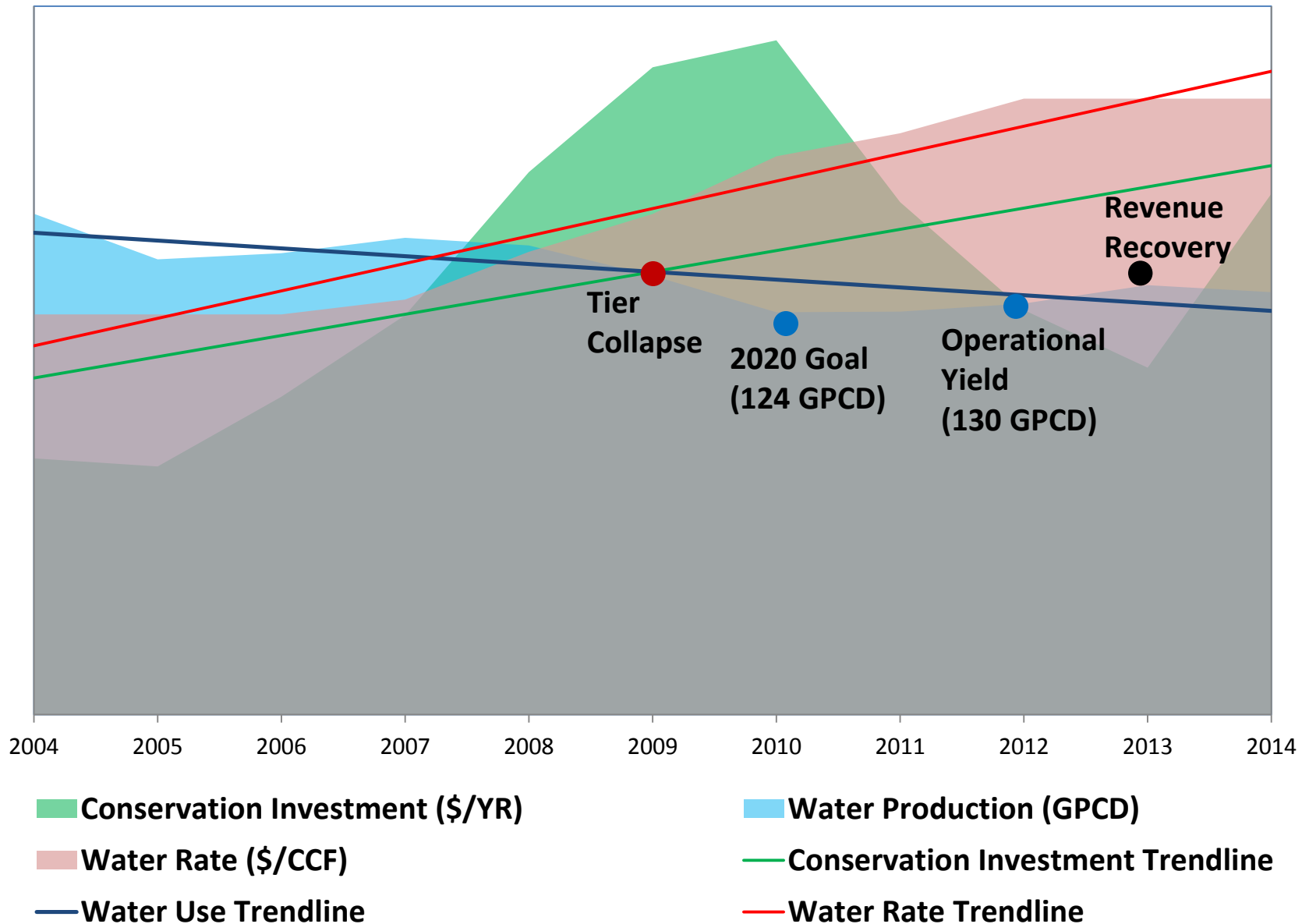
Population and Water Use



Rates 1990 - 2010



Revenue, Rates, and Water 2004-14



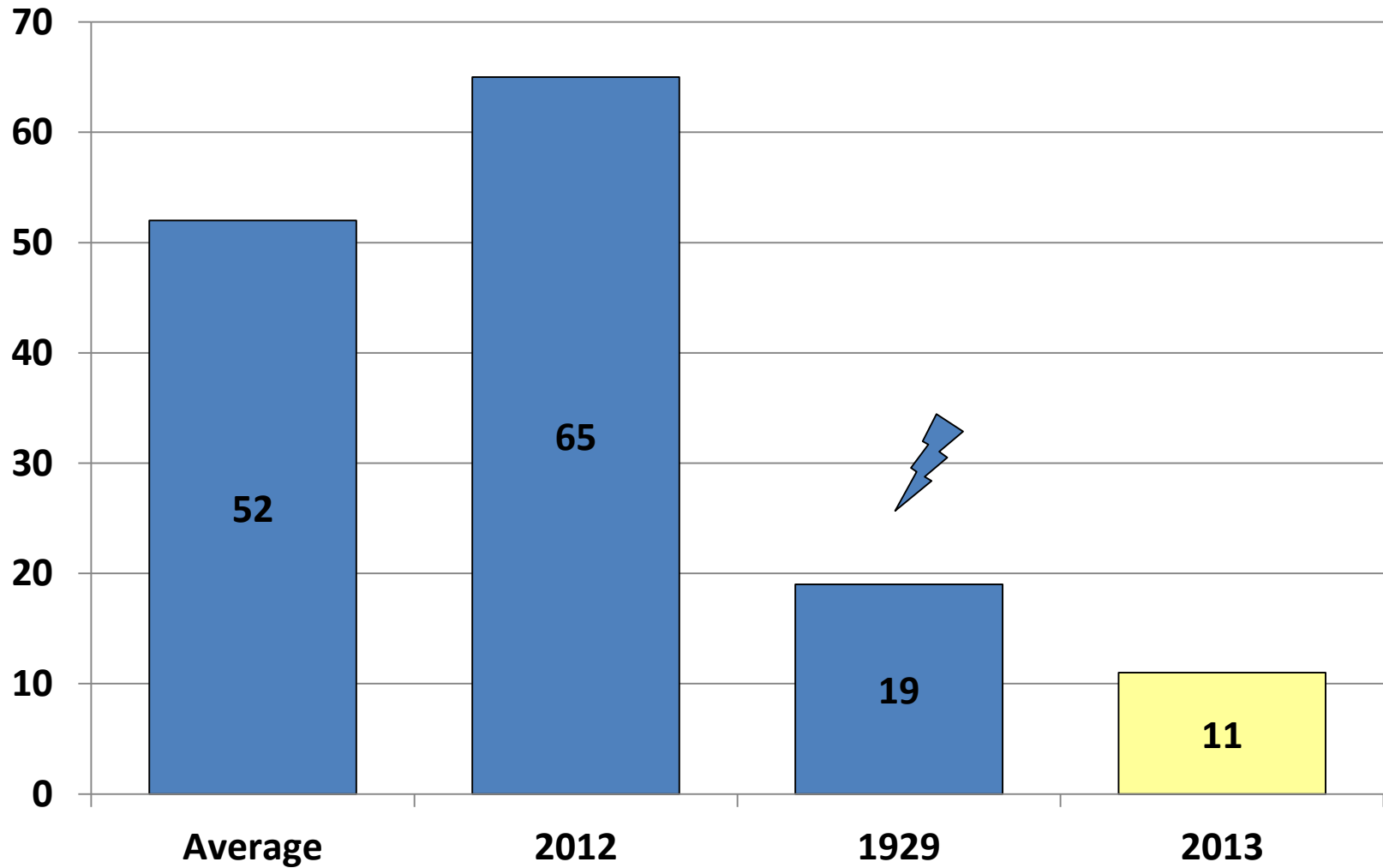
Tiered Rates 2012-Now

TIERS	CURRENT RATIO	CURRENT RATE	CCF's PER TIER
1	1	\$3.74/ccf	1-26
2	1:2	\$7.48	27-59
3	1:4	\$14.97	60-99
4	1:6	\$22.45	100+



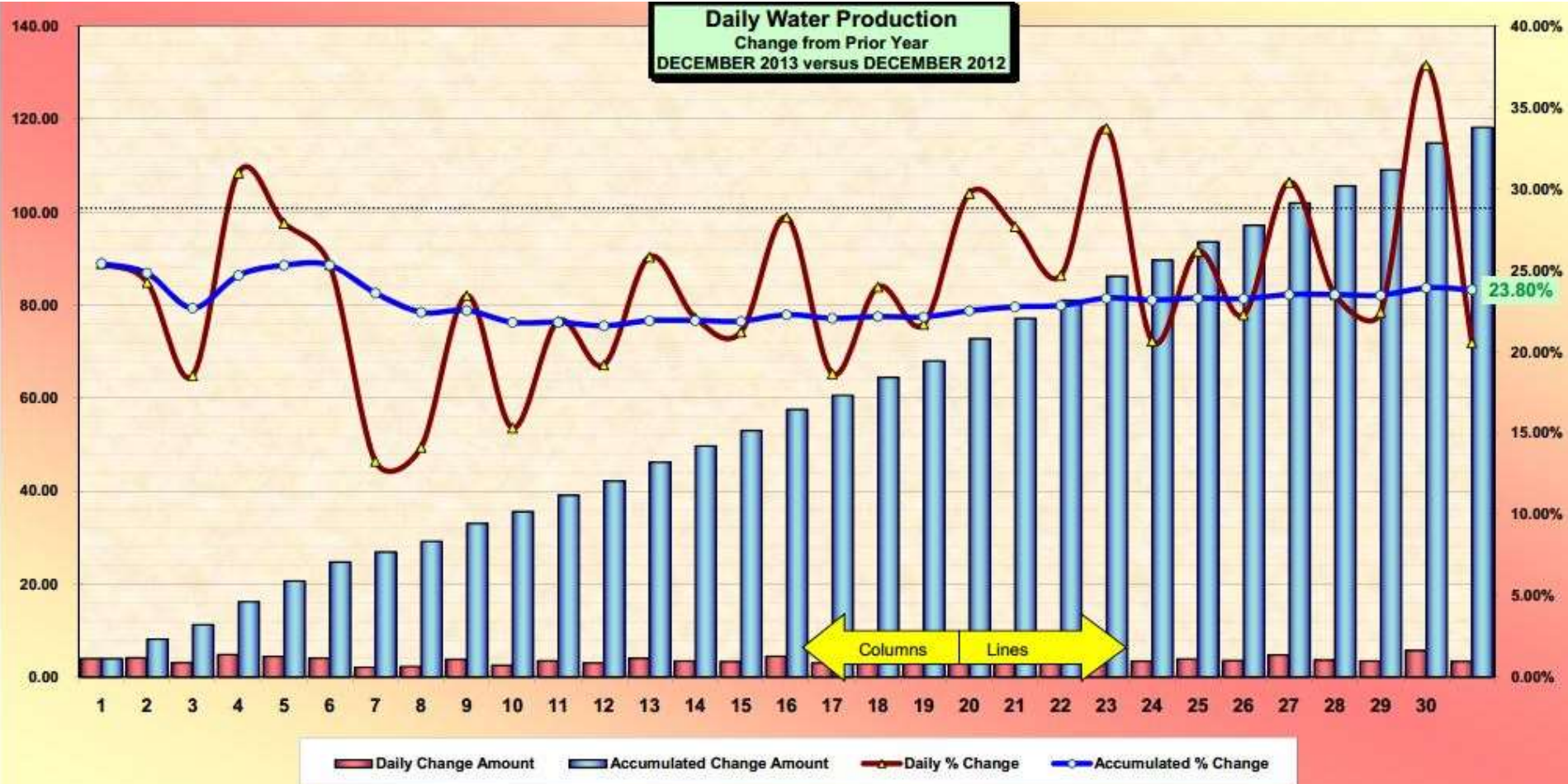
2013 Rain Vacation

Lake Lagunitas Rainfall Data from 1879, inches

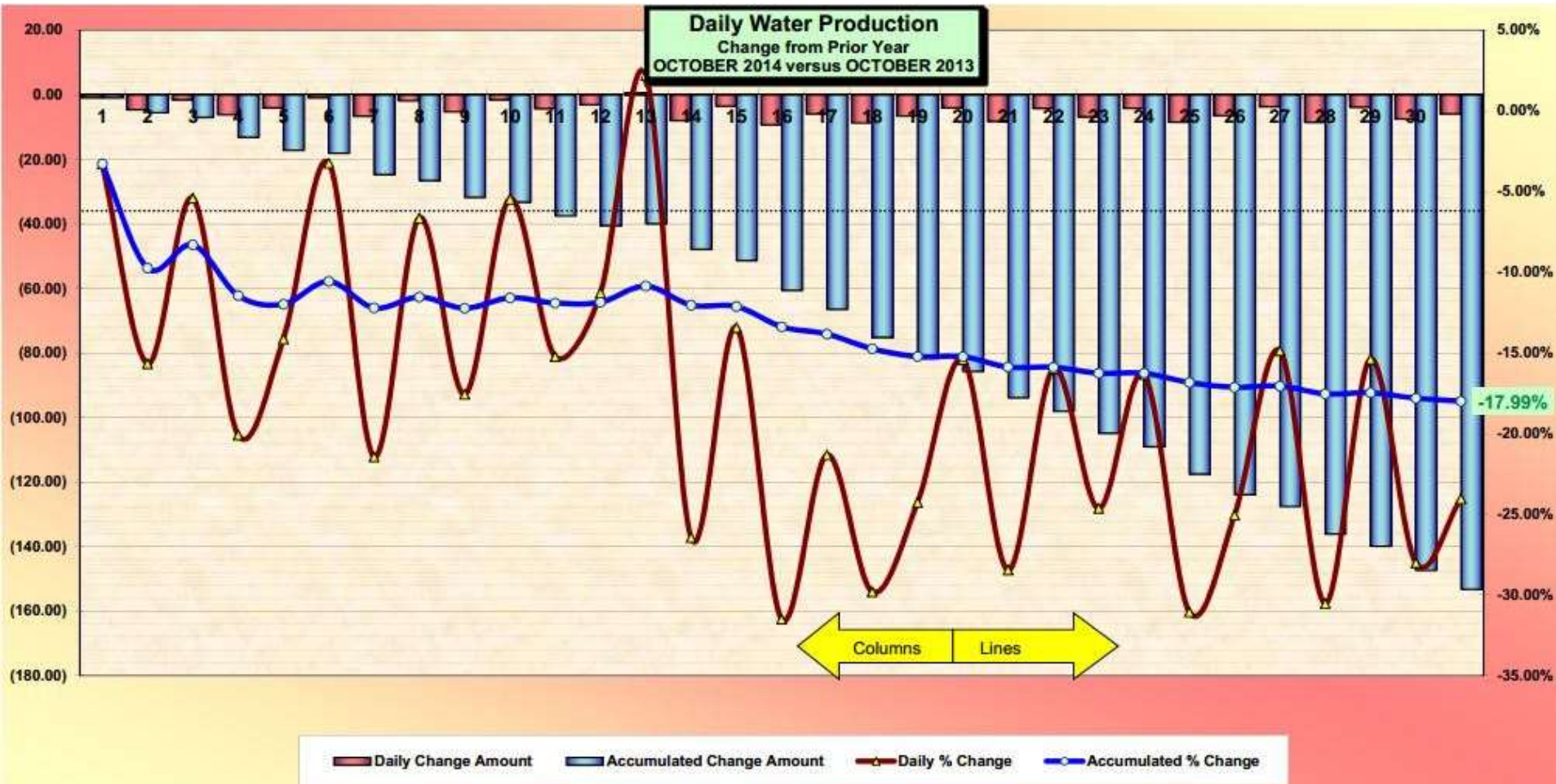


2013 Consumption

Daily Water Production
Change from Prior Year
DECEMBER 2013 versus DECEMBER 2012



2014 Consumption



Water Rate Restructuring

- Water Rate Advisory Committee 2010
- Fourteen members selected from community
- Met once a month for more than two years
- Goals:
 - To ensure an adequate revenue stream for the district
 - To ensure that costs are allocated equitably across all customer categories
- Submitted report to Board of Directors December 2012
- New board committee formed April 2013 to develop new rate structure proposal
- Draft Cost of Service Analysis completed September 2015

