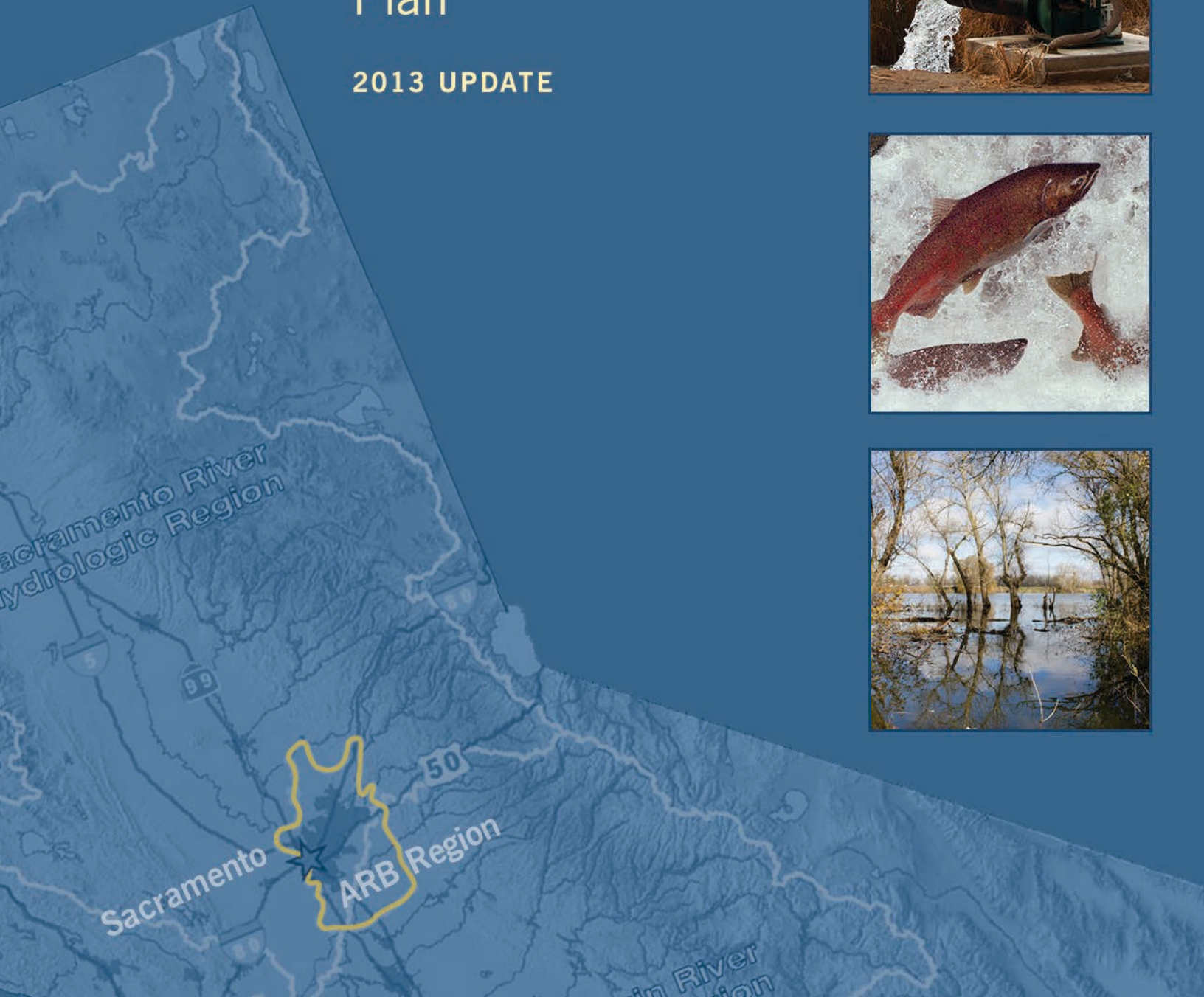
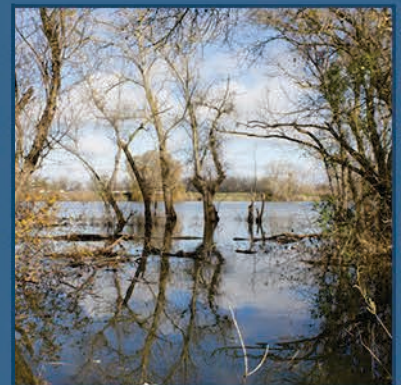
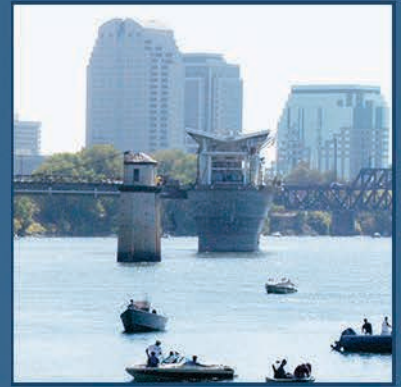


AMERICAN RIVER BASIN

Integrated Regional Water Management Plan

2013 UPDATE



Contents

1.	INTRODUCTION.....	1-1
1.1.	Background and Purpose	1-1
1.2.	Document Organization	1-3
1.3.	IRWMP Standards	1-4
2.	REGION DESCRIPTION.....	2-1
2.1.	Regional Boundary	2-1
2.2.	Internal Boundaries	2-2
2.2.1.	Municipality and County Boundaries	2-4
2.2.2.	Watershed Boundaries and Surface Water Features	2-6
2.2.3.	Groundwater Subbasin and Groundwater Management Agency Boundaries.....	2-8
2.2.4.	Stormwater and Flood Management Agency Boundaries.....	2-10
2.2.5.	Water Agency Boundaries	2-12
2.2.6.	Wastewater Agency Boundaries	2-14
2.3.	Relationship to the Sacramento-San Joaquin Delta	2-16
2.4.	Adjacent Areas.....	2-18
2.5.	Regional Economic Conditions and Trends.....	2-20
2.5.1.	General Land-Use Information	2-20
2.5.2.	Population	2-21
2.5.3.	Employment.....	2-23
2.5.4.	Income.....	2-24
2.5.5.	Housing.....	2-27
2.5.6.	Regional Growth Trends	2-27
2.5.7.	Social and Cultural Makeup of the Regional Community	2-31
2.6.	Water and Environmental Resources Setting.....	2-32
2.6.1.	Climate.....	2-33
2.6.2.	Watershed Characteristics.....	2-34
2.6.3.	Groundwater: Groundwater Basin Characteristics.....	2-64
2.7.	Flood and Stormwater Management Systems.....	2-72
2.7.1.	State Plan of Flood Control Facilities	2-73
2.7.2.	Sacramento Area Flood Control Agency	2-77
2.7.3.	Sacramento County Area	2-78
2.7.4.	Placer County Area.....	2-82
2.7.5.	El Dorado County Area.....	2-85
2.8.	Water Delivery and Wastewater Systems	2-86
2.8.1.	Major Water Supply and Wastewater-Related Infrastructure	2-86
2.8.2.	Placer County Water Agency.....	2-89
2.8.3.	City of Lincoln.....	2-90
2.8.4.	City of Roseville	2-91
2.8.5.	California American Water.....	2-93
2.8.6.	San Juan Water District.....	2-94
2.8.7.	Orange Vale Water Company	2-95
2.8.8.	Citrus Heights Water District.....	2-95
2.8.9.	Fair Oaks Water District	2-96
2.8.10.	Carmichael Water District	2-97
2.8.11.	Sacramento Suburban Water District.....	2-97
2.8.12.	Del Paso Manor Water District.....	2-98
2.8.13.	Golden State Water Company.....	2-98

2.8.14.	Rio Linda/Elverta Community Water District	2-99
2.8.15.	Natomas Central Mutual Water Company	2-100
2.8.16.	City of Sacramento.....	2-100
2.8.17.	El Dorado Irrigation District	2-101
2.8.18.	City of Folsom	2-102
2.8.19.	Sacramento County Water Agency	2-103
2.8.20.	Elk Grove Water District	2-104
2.8.21.	Fruitridge Vista Water Company	2-105
2.8.22.	Tokay Park Water Company	2-105
2.8.23.	Florin County Water District	2-105
2.8.24.	Rancho Murieta Community Services District	2-105
2.8.25.	City of Galt	2-106
2.8.26.	Placer County.....	2-107
2.8.27.	City of Auburn	2-107
2.8.28.	South Placer Municipal Utilities District	2-108
2.8.29.	Sacramento Regional County Sanitation District	2-108
2.9.	Water Demands and Supplies	2-109
2.9.1.	Water Demands.....	2-109
2.9.2.	Water Supplies	2-115
2.9.3.	Future Outlook Considering Water Supplies and Demands	2-129
2.10.	Climate Change.....	2-130
2.10.1.	Regional Climate Change Effects and Vulnerabilities.....	2-130
2.10.2.	Climate Change Mitigation and Adaptation Strategies.....	2-138
2.11.	Technical Analysis.....	2-141
2.11.1.	Technical Data and Information.....	2-141
2.11.2.	Technical Analyses and Methods	2-143
3.	PLANNING COORDINATION AND INTEGRATION	3-1
3.1.	Stakeholder Involvement	3-1
3.1.1.	History of Regional Cooperation	3-1
3.1.2.	Stakeholder Outreach Process.....	3-2
3.1.3.	Public Outreach.....	3-6
3.1.4.	Outreach to Disadvantaged Communities.....	3-7
3.1.5.	Outreach to Tribes.....	3-10
3.1.6.	State Agency Assistance	3-10
3.2.	Relationship with Local Water Planning	3-10
3.3.	Relationship with Local Land-Use Planning	3-11
3.4.	Relation to Neighboring Regional Planning Efforts	3-13
3.4.1.	Sacramento River Funding Area.....	3-14
3.4.2.	CABY IRWM Region.....	3-15
3.4.3.	Westside Sacramento IRWM Region	3-16
3.4.4.	Northern Sacramento Valley IRWM Region.....	3-18
3.4.5.	Yuba County IRWM Region	3-19
3.4.6.	Eastern San Joaquin County IRWM Region.....	3-19
3.4.7.	Mokelumne/Amador/Calaveras IRWM Region	3-20
3.4.8.	Southwestern Sacramento County	3-21
3.5.	Coordination with State and Federal Planning Efforts.....	3-21
3.5.1.	State Coordination.....	3-21
3.5.2.	Federal Coordination.....	3-23
4.	IRWMP GOVERNANCE.....	4-1
4.1.	Background	4-1

4.2.	ARB IRWMP Governance Structure	4-2
4.2.1.	Planning Forum	4-3
4.2.2.	Advisory Committee	4-4
4.2.3.	Management Committee	4-5
4.2.4.	Regional Water Management Group – Regional Water Authority	4-6
4.3.	ARB IRWMP Adoption	4-9
5.	IRWMP FRAMEWORK	5-1
5.1.	Framework Overview	5-1
5.2.	Vision	5-3
5.3.	Goals	5-4
5.4.	Principles	5-4
5.5.	Objectives	5-5
5.6.	Strategies	5-9
5.6.1.	Resource Management Strategies and ARB Strategies	5-31
5.7.	Project Submission, Review, and Communication Process	5-37
5.7.1.	Project Submission Process	5-37
5.7.2.	Project Review Process	5-39
5.7.3.	Project Review Communication and Vetting Process	5-44
6.	IRWMP IMPLEMENTATION	6-1
6.1.	IRWMP Financing	6-1
6.2.	Project Financing	6-2
6.2.1.	External Funding Sources	6-9
6.2.2.	Other Funding Sources	6-13
6.3.	IRWMP Performance Monitoring	6-15
6.3.1.	Tracking Progress of the IRWMP	6-15
6.3.2.	Monitoring Plan for Projects	6-16
6.4.	Data Management	6-17
6.4.1.	Overview of IRWMP Project Data Needs	6-17
6.4.2.	Frequently Used Data Sources	6-18
6.4.3.	Data Gaps	6-23
6.4.4.	Support of Statewide Data Needs	6-23
6.5.	Benefits and Impacts of IRWMP Implementation	6-23
6.5.1.	Potential Benefits Within the Region	6-24
6.5.2.	Potential Impacts within the Region	6-30
6.5.3.	Potential Interregional Benefits and Impacts	6-31
6.5.4.	Benefits and Impacts to DACs and Native Tribes	6-32
6.6.	IRWMP Adaptability to Future Situations	6-32
7.	REFERENCES	7-1

List of Figures

Figure 2-1.	Municipal and County Boundaries in the ARB Region	2-5
Figure 2-2.	Watersheds and Surface Water Bodies	2-7
Figure 2-3.	Groundwater Subbasins and Management Areas	2-9
Figure 2-4.	Stormwater and Flood Management Areas	2-11
Figure 2-5.	Water Agency Boundaries	2-13
Figure 2-6.	Wastewater Agency Jurisdictional Areas	2-15
Figure 2-7.	Legal Delta and ARB Region	2-17
Figure 2-8.	Neighboring IRWM Regions	2-19
Figure 2-9.	2008 Land Use by County	2-21

Figure 2-10. Disadvantaged Communities within the ARB Region.....	2-26
Figure 2-11. Regional Growth Trends in Population, Employment and Housing.....	2-28
Figure 2-12. Sacramento County Agricultural Land and Urban and Built-up Land from 2000 to 2010	2-29
Figure 2-13. El Dorado County Agricultural Land and Urban and Built-up Land from 2000 to 2010	2-29
Figure 2-14. Placer County Agricultural Land and Urban and Built-up Land from 2000 to 2008.....	2-30
Figure 2-15. Ethnic Makeup of the Regional Community.....	2-32
Figure 2-16. Average Monthly Maximum and Minimum Temperatures	2-34
Figure 2-17. Average Monthly Precipitation and Evapotranspiration	2-34
Figure 2-18. Outlines of Major Rivers and Streams in the ARB Region.....	2-37
Figure 2-19. Average Monthly Flows at Freeport	2-38
Figure 2-20. Upper Bear Watershed	2-42
Figure 2-21. Upper Coon-Upper Auburn Watershed.....	2-44
Figure 2-22. Lower American Watershed.....	2-48
Figure 2-23. Average Monthly Flows at Fair Oaks USGS Gage.....	2-50
Figure 2-24. Lower Sacramento Watershed	2-56
Figure 2-25. Upper Cosumnes Watershed	2-59
Figure 2-26. Average Monthly Flows at Michigan Bar	2-60
Figure 2-27. Upper Mokelumne Watershed	2-63
Figure 2-28. Regional Geologic Cross Section.....	2-66
Figure 2-29. Extents of Contamination Plumes as Reported in 2011 SGA Basin Management Report.....	2-68
Figure 2-30. SPFC Facilities in the ARB Region	2-75
Figure 2-31. Water Supply Portfolios as Reported in 2010 UWMPs	2-127
Figure 3-1. Opti Home Page	3-5
Figure 3-2. Opti Project Map Display.....	3-6
Figure 4-1. ARB IRWMP Governance Structure	4-3
Figure 5-1. ARB IRWMP Framework.....	5-1
Figure 5-2. Example of Relationships Among a Goal, Objectives, and Strategies.....	5-9
Figure 5-3. Opti Project Submission Form	5-38
Figure 5-4. ARB Project Review Score Tiers.....	5-40
Figure 5-5. ARB Project Review Report Card Template	5-41
Figure 6-1. Distribution of Projects Meeting Multiple Objectives	6-25

List of Tables

Table 1-1. Location of 2013 ARB IRWMP Components.....	1-4
Table 2-1. Water-Related Agencies Within the ARB Region	2-3
Table 2-2. 2008 Population by Area	2-22
Table 2-3. SACOG Population Projections by County.....	2-22
Table 2-4. Sacramento County Employment Summary	2-23
Table 2-5. Placer County Employment Summary	2-24
Table 2-6. El Dorado County Employment Summary.....	2-24
Table 2-7. Regional Median Income Data	2-24
Table 2-8. Disadvantaged Community Data.....	2-25
Table 2-9. Housing Units Estimates–2012	2-27
Table 2-10. Sacramento Valley Water Year Types and Occurrence (1906 – 2012).....	2-39
Table 2-11. WFA Water Year Types and Occurrence (1901–2010)	2-49
Table 2-12. Species of Concern on Lower American River	2-53

Table 2-13. ARB Region’s Exposure to Flood Hazards	2-72
Table 2-14. SPFC Facilities in the ARB Region	2-76
Table 2-15. SPFC Levees in the ARB Region	2-76
Table 2-16. SAFCA Districts and Funding Expenditures.....	2-78
Table 2-17. Treatment Capacity at Existing/Planned WTPs within the ARB Region.....	2-87
Table 2-18. WWTPs Within the ARB Region.....	2-89
Table 2-19. Estimated Recent Historical Water Demands (AFY).....	2-110
Table 2-20. Projected Annual Water Demands (AFY).....	2-111
Table 2-21. Baseline and Target Demands (gallons per capita per day).....	2-113
Table 2-22. Surface Water Rights and Contracts.....	2-117
Table 2-23. Groundwater Extraction (AFY).....	2-124
Table 2-24. Recycled Water Use Summary–2010.....	2-125
Table 2-25. Projected Water Supplies.....	2-128
Table 2-25. Projected Water Supplies (contd.)	2-129
Table 2-26. GHG Emissions Inventories and Climate Change-Related Plans in the ARB Region.....	2-138
Table 2-27. Data Used in the ARB IRWMP 2013 Update	2-142
Table 3-1. Neighboring IRWM Regions and Associated Funding Areas.....	3-14
Table 3-2. State Agency Roles and Interactions with the ARB Region	3-22
Table 3-3. Federal Agency Roles and Interactions with the ARB Region	3-23
Table 4-1. Current and Potential Future Participants in ARB IRWMP Governance Structure	4-11
Table 5-1. ARB IRWMP Goals	5-4
Table 5-2. ARB IRWMP Objectives	5-6
Table 5-3. Relationships of ARB IRWMP Objectives and Goals	5-8
Table 5-4. ARB IRWMP Strategies.....	5-10
Table 5-5. ARB IRWMP Strategy “Parking Lot”	5-25
Table 5-6. Relationships of ARB IRWMP Strategies and Objectives.....	5-27
Table 5-7. Resource Management Strategies and Applicability to the ARB Region	5-31
Table 6-1. Funding Sources of Priority Projects	6-5
Table 6-2. Example Types of Monitoring.....	6-17
Table 6-3. Sample List of Data Needed for Current and Future IRWMP Projects.....	6-18
Table 6-4. Frequently Used Data Sources and Their Management Systems	6-20
Table 6-5. Number of Projects that Meet Respective ARB Objectives.....	6-26
Table 6-6. Benefits of Plan Implementation per ARB IRWMP Objective.....	6-27
Table 6-7. Potential Impacts of a Subset of Projects	6-30
Table 6-8. Summary of Likely IRWMP Implementation Actions.....	6-34

Abbreviations and Acronyms

°F	Fahrenheit
ABCW	American Basin Council of Watersheds
ADWF	average dry weather flow
Aerojet	Aerojet General Corporation
AF	acre-feet
AFB	Air Force Base
AFY	acre-feet per year
AR/CC	Auburn Ravine/Coon Creek
ARB	American River Basin
ARFCD	American River Flood Control District
ASR	Aquifer Storage and Recovery
Auburn Basin Plan	City of Auburn Water Quality Control Plan for the Sacramento and San Joaquin River Basins
Bay-Delta	Sacramento-San Joaquin River Delta and San Francisco Bay
BMO	basin management objectives
BMP	Best Management Practices
CABY	Cosumnes, American, Bear, Yuba
Cal-Am	California American Water Company
CALFED	California Federal Bay-Delta Program
CalWEP	California Water and Energy Program
CASGEM	California Statewide Groundwater Elevation Monitoring
CDFW	California Department of Fish and Wildlife
CDPH	California Department of Public Health
CEC	California Energy Commission
Central Valley Water Board	Central Valley Regional Water Quality Control Board
CEQA	California Environmental Quality Act
CESA	California Endangered Species Act
cfs	cubic feet per second
CFW	Camp Far West
CHWD	Citrus Heights Water District
CNA	Community Needs Assessment
CNDDB	California Natural Diversity Database
CNRA	California Natural Resources Agency
CRP	Cosumnes River Preserve
CrVI	hexavalent chromium
CTP/NTP	Cooperative Transmission Pipeline/Northridge Transmission Pipeline
CUWCC	California Urban Water Conservation Council
CV-SALTS	Central Valley Salinity Alternatives for Long-Term Sustainability
CVFPP	2012 Central Valley Flood Protection Plan
CVO	U.S. Department of the Interior, Bureau of Reclamation, Central Valley Office
CVP	Central Valley Project
CWA	Clean Water Act
CWC	California Water Code
CWD	Carmichael Water District
CWP	California Water Plan
DAC	disadvantaged community

Del Paso Manor	Del Paso Manor Water District
Delta	Sacramento-San Joaquin River Delta
DMM	demand management measures
DMS	data management system
DWR	California Department of Water Resources
<i>E. Coli</i>	<i>Escherichia coli</i>
EBMUD	East Bay Municipal Utility District
EDU	equivalent dwelling units
EGWD	Elk Grove Water District
EID	El Dorado Irrigation District
EJ	Environmental Justice
Elk Grove	City of Elk Grove
EMD	Environmental Management Department
EPA	U.S. Environmental Protection Agency
ERP	Environmental Restoration Plan
ESA	Endangered Species Act
FEMA	Federal Emergency Management Agency
FloodSAFE	FloodSafe California
FOG	fats, oils, and grease
FMS	Flow Management Standard
Folsom	City of Folsom
FOWD	Fair Oaks Water District
Framework	ARB IRWMP Framework
FRWP	Freeport Regional Water Project
FVWC	Fruitridge Vista Water Company
Galt	City of Galt
GBA	Northeastern San Joaquin County Groundwater Banking Authority
GET	groundwater extraction and treatment
GHG	greenhouse gas
GIS	Geographic Information Systems
GMP	groundwater management plan
gpm	gallons per minute
GSWC	Golden State Water Company
Handbook	Climate Change Handbook for Regional Water Planning
HCD	California Department of Housing and Community Development
HCP	Habitat Conservation Plan
I-Bank	California Infrastructure and Economic Development Bank
IPCC	Intergovernmental Panel on Climate Change
IRWM	Integrated Regional Water Management
IRWMP	Integrated Regional Water Management Plan
JPA	Joint Powers Authority
LID	low impact development
Lincoln	City of Lincoln
M&I	municipal and industrial
MAC	Mokelumne/Amador/Calaveras
MAF	million acre feet
MCL	Maximum Contaminant Level
MG	million gallon
mg/L	milligram per liter
MGD	million-gallons-per-day
MHI	median household income

MOU	Memorandum of Understanding
MS4	Municipal Separate Storm Sewer System
NA	not applicable
NCMWC	Natomas Central Mutual Water Company
NCWA	Northern California Water Association
NEPA	National Environmental Protection Act
NID	Nevada Irrigation District
NMFS	National Marine Fisheries Service
NOAA	National Oceanic and Atmospheric Administration
NPDES	National Pollutant Discharge Elimination System
NRC	National Research Council
NRCS	Natural Resources Conservation Services
NSA	North Service Area
NSV	Northern Sacramento Valley
O&M	operation and maintenance
OCAP	Operations Criteria Plan
OHWD	Omochumne-Hartnell Water District
OVWC	Orange Vale Water Company
PCB	polychlorinated biphenyl
PCE	tetrachloroethylene
PCWA	Placer County Water Agency
PG&E	Pacific Gas and Electric
Placer County FCWCD	Placer County Flood Control and Water Conservation District
Placer Legacy	Placer Legacy Program of Placer County
POU	Place of Use
PRC	Public Resources Code
QA/QC	quality assurance/quality control
Rancho Cordova	City of Rancho Cordova
Rancho Murieta	Rancho Murieta Community Services District
RD	Reclamation District
Reclamation	U.S. Department of the Interior, Bureau of Reclamation
RFMP	Regional Flood Management Plans
Rio Linda/Elverta	Rio Linda/Elverta Community Water District
RMS	Resource Management Strategy
Rocklin	City of Rocklin
Roseville	City of Roseville
RWA	Regional Water Authority
RWVG	Regional Water Management Group
SacIWRM	Sacramento Area Integrated Water Resources Model
SACOG	Sacramento Area Council of Governments
Sacramento	City of Sacramento
SAFCA	Sacramento Area Flood Control Agency
SAFCA Act	Sacramento Area Flood Control Agency Act of 1990
SARSAS	Save Auburn Ravine Salmon and Steelhead
SASD	Sacramento Area Sanitation District
SAWC	South Area Water Council
SB	Senate Bill
SCGA	Sacramento Central Groundwater Authority
SCWA	Sacramento County Water Agency
SD&FCC	storm drainage and flood control collection
SDWSRF	Safe Drinking Water State Revolving Fund

SGA	Sacramento Groundwater Authority
SJWD	San Juan Water District
SMD	Sewer Maintenance District
SMUD	Sacramento Municipal Utility District
SNMP	Salt and Nutrient Management Plan
South Sutter WD	South Sutter Water District
SPFC	State Plan of Flood Control
SPFC Planning Area	areas currently protected by facilities of the SPFC
SPMUD	South Placer Municipal Utility District
SRA	Shaded Riverine Aquatic
SRCSD	Sacramento Regional County Sanitation District
SRFA	Sacramento River Funding Area
SRWWTP	Sacramento Regional Wastewater Treatment Plant
SSA	South Service Area
SSCAWA	South Sacramento County Agricultural Water Authority
SSQP	Sacramento Stormwater Quality Partnership
SSWD	Sacramento Suburban Water District
SSMP	Sewer System Management Plan
state	state of California
State Water Board	State Water Resources Control Board
SWMP	Stormwater Management Plan
TAF	thousand-acre-feet
TCE	trichloroethylene
TDS	total dissolved solids
TMDL	total maximum daily load
TNC	The Nature Conservancy
UAIC	United Auburn Indian Community of the Auburn Rancheria
USACE	U.S. Army Corps of Engineers
USDA	U.S. Department of Agriculture
USFWS	U.S. Fish and Wildlife Service
USGS	U.S. Geological Survey
UWMP	Urban Water Management Plan
VOC	volatile organic compounds
West Sacramento	City of West Sacramento
Westside-Sac	Westside-Sacramento
WDCWA	Woodland-Davis Clean Water Agency
WDR	Waste Discharge Requirements
WEP	RWA Water Efficiency Program
WFA	Water Forum Agreement
WIFIA	Water Infrastructure Finance and Innovation Authority
WPC	Western Placer County
WRA	Water Resources Association of Yolo County
WRDA	Water Resources Development Act
WRF	Water Reclamation Facility
WSAFCA	West Sacramento Area Flood Control Agency
WTP	water treatment plant
WWTP	wastewater treatment plant
WWTRF	Wastewater Treatment and Reclamation Facility
WWRP	Wastewater Reclamation Plant

This page left blank intentionally.