



Regional Water Authority
BUILDING ALLIANCES IN NORTHERN CALIFORNIA



RWEPAC Meeting March 8, 2016

Agenda

- **Welcome and Introductions**
- **January 2016 Meeting Notes**
- **Budget Presentation**
- **Mini Discussion: Customer Water Reports**
- **Mini Discussion: Messaging**
- **General Program Updates**
- **Optional Lunch- El Tapatio**

Welcome and Introductions

- Name and organization
- Do you have Spring Fever yet?



"Here is my absence note. I had Spring fever."



"I avoided the flu all winter... but spring fever finally got me."

January 2016 Meeting Notes

- Motion for approval
- Post to RWA website

Budget Revenue Changes

- **5% increase in dues (\$20,000)**
 - See sheet for individual agency increases
- **Unused \$ from last year (\$20,000)**
- **\$200,000 in grant funding for public outreach**
 - Public outreach committee will discuss how to use it
- **Move % of staff salary costs to RWA budget**
 - If RWA budget approved as is (approx. \$13,000)

Budget Expense Changes

- Increase in overhead costs (\$7,000)
- Increase in public outreach (\$11,000)
- Add Poster Decorating Contest (\$10,000)
- Add consultant time for contest (\$2,000)

Budget Summary

2015-2016

2016-2017

Table 1. Category 1 Budget Summary

Program Revenues FY2016	
Projected FY 2016 Category 1 Revenues	\$411,000
Reserve Funding	\$11,000
Total Revenues	\$422,000
Program Expenses FY2016	
Program Management and Implementation, Technical Assistance	
Staff, Legal, Office Expenses, Travel, Financial and Audit Services	\$235,000
Water Efficiency Consulting Services	\$50,000
CUWCC BMP Implementation Categories	
Public Outreach	\$99,000
School Education	\$18,000
Landscape	\$20,000
Total Expenses	\$422,000

Table 1. Category 1 Budget Summary

Program Revenues FY2017	
Projected FY 2017 Category 1 Revenues	\$432,000
Reserve Funding	\$20,000
Total Revenues	\$452,000
Program Expenses FY2017	
Program Management and Implementation, Technical Assistance	
Staff, Legal, Office Expenses, Travel, Financial and Audit Services	\$242,000
Water Efficiency Consulting Services	\$50,000
CUWCC BMP Implementation Categories	
Public Outreach	\$110,000
School Education	\$30,000
Landscape	\$20,000
Total Expenses	\$452,000



REGIONAL WATER EFFICIENCY PROGRAM



Budget Next Steps

- **RWA Board meeting on March 10th**
 - Funding will be added to Public Outreach
- **Approve now or bring back to May meeting?**
- **Open it up for discussion and questions**

Stretch Break



Mini Discussion: Customer Reports

- Are these working?
- Customer feedback?
- Lots of companies-WaterSmart, Dropcountr, Aiqueous, Smart Utility Systems, etc. Is there confusion?
- Regional contracts?



Mini Discussion: Messaging with current Folsom Lake conditions

- Are customers inquiring about this?
- What is your agency's response?
- Do we need another “drought fatigue” customer survey?
- Are you concerned about meeting your conservation targets?



Aqua Hawk



Home Water Loss Detection Strips

Small leak, big bucks.

A leaky toilet can waste 200,000 litres of water in a single year.

That's enough water to fill a large swimming pool - It could be costing you over \$100.00 a year!

toss
one dye test strip into your toilet tank. Wait 20 minutes.

check
the water bowl. If the colour changes, you have a leak.

repair
with our easy to follow tips at: www.companyname.com/tips

U.S. and Canadian Patents Pending
The DATA Group of Companies
www.datagroup.ca | 1-800-885-3878

www.companyname.com | 1.800.123.4564

proudly provided by **Company Name**

General Program Updates

- **UWMPs**
- **Mulch Madness turns into March Mayhem**
- **Saturation study**
- **SRCSO increased funding to total \$350,000**
 - Project management fees starting July
- **ITP comments due March 13th**
- **PIO meeting, sent out toolkits**

Current Messages

Statewide drought continues...

- Sprinklers off till Spring
- Upgrade fixtures with WaterSense products
- Find and fix leaks



Spring/Summer Messages

Theme: “Rethink Your Yard”

- Limit Landscape Watering
- Prioritize your trees
- Check sprinklers for efficiency
- Upgrade landscape with low water use plants



New Emergency Regulation

Assessing Drought Conditions

- State Water Board staff will monitor and evaluate available data on precipitation, snowpack, reservoir storage levels and other factors and report back to the State Water Board in March and April 2016.
- If conditions warrant, State Water Board staff may bring a proposal for “rescission or adjustment” of the Emergency Regulation in May 2016.

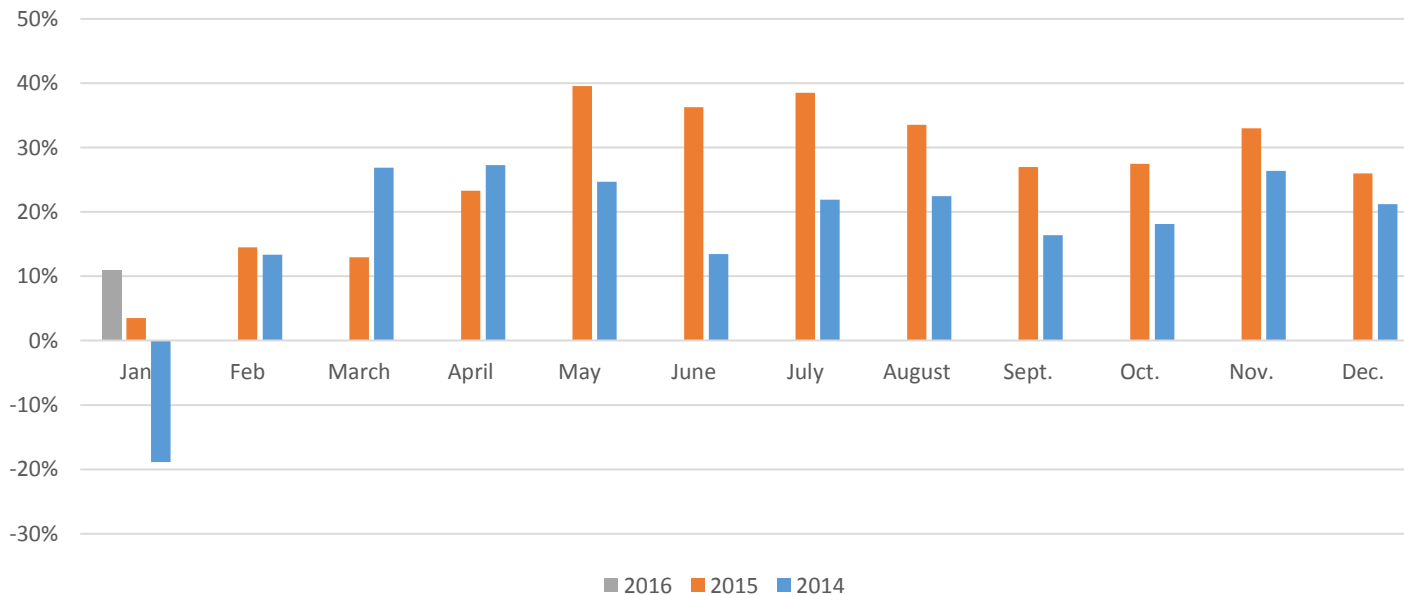
New Emergency Regulation

Additional language

- Prohibits Homeowners Associations/Community Service Associations from penalizing residents for reducing or eliminating the watering of vegetation or lawns during a declared drought emergency.

Water Savings

Sacramento Region Monthly Conservation Reductions



January

2016	11%
2015	3.5%
2014	-18.9%

Precip.

2016	0.52
2015	0.04
2014	0.51
2013	1.01

Temp.

2016	49.7
2015	48.5
2014	50.6
2013	44.1



REGIONAL WATER EFFICIENCY PROGRAM



Proposition 84 Round 3

- Working on agreement with DWR
- Total funding for WEP: \$800,000
- Once the agreement is signed, RWA will allocate funds to each participating
 - Split evenly between agencies by program
- Cost share has to be expended first

Announcements and Events



Next RWEPAC Meetings

January 12, 2016☑
March 8, 2016☑
May 10, 2016
July 12, 2016
September 13, 2016
November 8, 2016
December 13, 2016
January 10, 2017

Time for Lunch

