

Tulare County DAC Water Challenges

Denise England, Water Resources Director, Tulare County

Tulare Lake Basin DAC Water Study Map

Data updated in 2010

Tulare Lake Basin Water Alliance

Home | **Disadvantaged Communities (DACs)** | Sustainable Groundwater Management Act (SGMA)

Integrated Regional Water Management (IRWM) | Tulare County Water Commission | Meeting Calendar

Search []

Home / Disadvantaged Communities (DACs) / Disadvantaged Community Water Study Map

Disadvantaged Community Water Study Map

Disadvantaged Community Water Study Map

Map Legend

- = Clickable Water System
- = No measures available
- = All water quality measures are UNDER the MCL
- = The MEAN of measures is under the MCL (but at least one measure for one substance is over the MCL)
- = The MEAN of measures is over the MCL (but at least one measure for one substance is under the MCL)
- = For at least one substance, all measures are OVER the MCL

Tulare Lake Basin

- Counties
- DACs

The map displays a geographical area with various colored markers (blue, green, yellow, orange, red) representing different water quality and accessibility metrics. It also shows county boundaries (Fresno, Kings, Tulare) and major landmarks like the Tulare River, Sequoia National Forest, and Tulare River Reservation.

TLB DAC Study Community

UNDER the MCL

■ = The MEAN of measures is under the MCL (but at least one measure for one substance is over the MCL)

■ = The MEAN of measures is over the MCL (but at least one measure for one substance is under the MCL)

■ = For at least one substance, all measures are OVER the MCL

Tulare Lake Basin



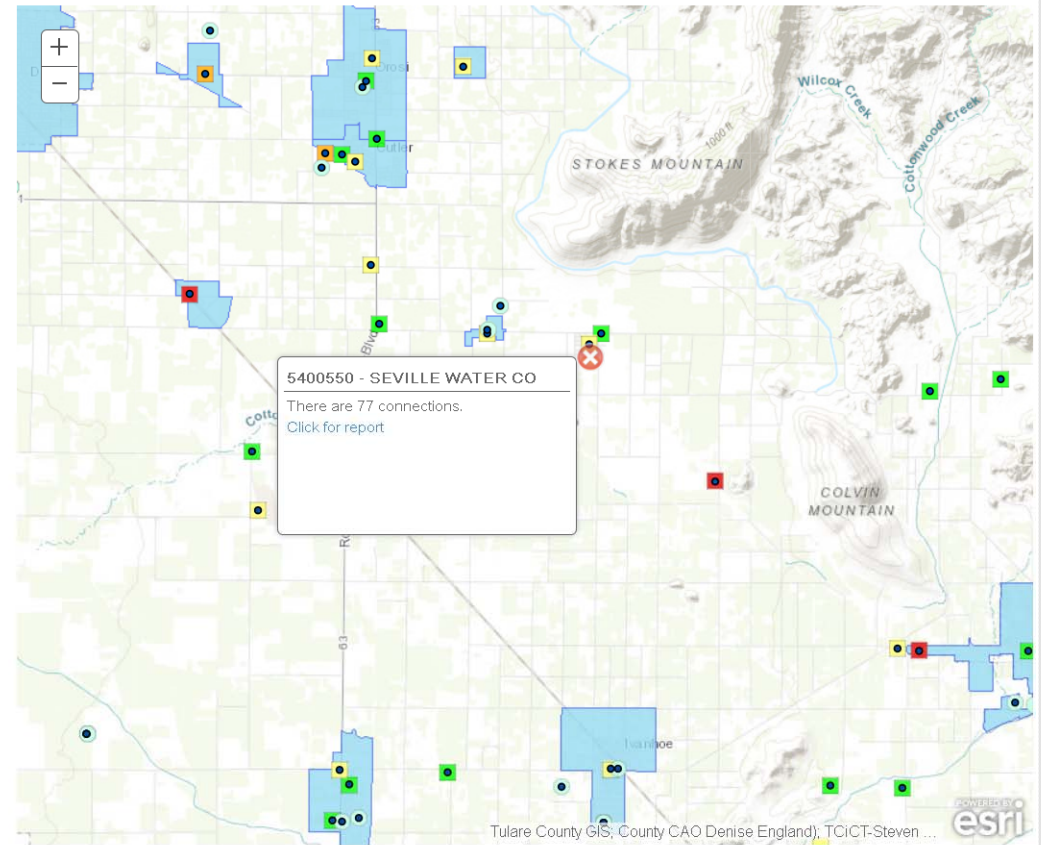
Counties



DACs



Disadvantaged Community Water Study Map



TLB DAC Water Study Community Report

Water System Details

**Error there is more than one entry for Water System Areas.
(Geography, IRWMP, System Category, MHI2010, and DAC calculation are incorrect in database.)**

Community: SEVILLE WATER CO
 County: Tulare
 Sys. Category:
 Agency Name: WC of Seville
 Ownership: Private
 Ownership Type: Private non-PUC reg
 Population: 400
 Connections: 77
 2010 MHI: 0,000
 SDAC or DAC: SDAC
 DAC Classification Source: Calculated

IRWMP:
 Geography:
 Location:
 Contact Title:
 Contact: GREGORIO FRIAS
 Phone:
 Alt. Contact:
 Phone:

First Name:

H2O Sys. Num.: 5400550
 Water Source: GW
 Active Wells Count: 1
 Wells Issues?: XXXXX
 Issues: Old leaky pipelines, Shallow well (125'), nitrate fluctates above and below MCL

Potential Solutions: Build additional capacity at Cutler-Orosi plant/

Water quality sample results for selected constituents. Values shown for water samples collected 2004-2014.													
	Raw Water			Delivered Water				Raw Water			Delivered Water		
	Max.	Ave.	Count	Max.	Ave.	Count		Max.	Ave.	Count	Max.	Ave.	Count
Arsenic (10 ug/L):	1.50	1.30	3	1.50	1.30	3	Flouride (2 mg/L):	0.17	0.15	3	0.17	0.15	3
DBCP (0.2 ug/L):	0.01	0.01	1	0.01	0.01	1	Perchlorate (6 ug/L):	9.00	2.28	18	9.00	2.28	18
Nitrate as NO3 (45 mg/L):	46.00	40.43	23	46.00	40.43	23	TCE (5 ug/L):	0.00	0.00	1	0.00	0.00	1
PCB (0.5ug/L):							THMs (80 ug/L):						
Uranium (20 pC/L):													

WW Sys. Num.:
 Treatment: XXXXX
 Design Flow (MGD):

Total Enforcement Actns:
 Cat. 1 Viol:
 Cat. 2 Viol:

Total Viol:
 Last Name:

Septic Probs?: XXXXX
 Sewer Issues: at capacity, sewer lines too shallow
 Potential Solutions: Replace water distribution system, drill new well and connect with Yettem's water system
 Treatment Comm: XXXXX
 SelfHelp Comments:

Tulare County DAC Progress since TLB DAC Study Completion

- Alpaugh CSD Formation
- Cameron Creek New System/ Consolidation
- Matheny Tract New System/ Consolidation
- Seville New System/ Consolidation
- North Tulare County Regionalization
- Drought Projects
 - Ave 322 Main Line Extension
 - East Porterville
 - Oakieville
 - Monson

Challenges That Still Exist

- Unsustainable Communities
 - Economies of scale
 - Inability to infill
 - Lack of infrastructure to build affordable housing
 - O&M costs too high for small, disadvantaged population
- Wastewater
 - Inability to force consolidation
 - Regional Board's OWTS Policy limits septic tank installation, repair, & replacement
 - Regionalization is expensive