

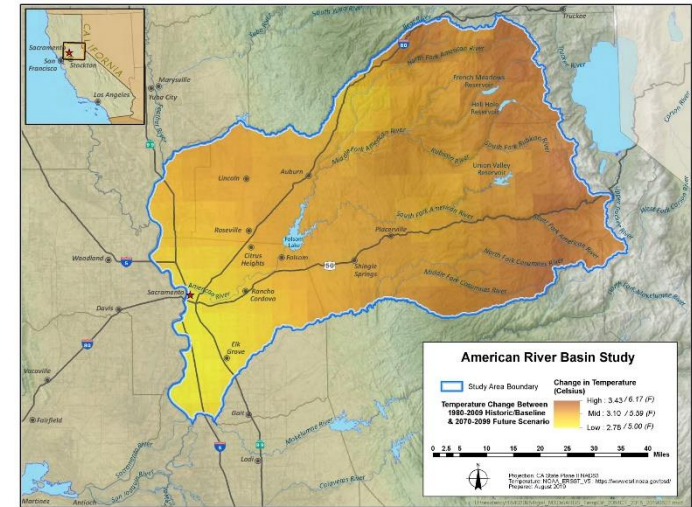
# Major Projects Management Services Program/ Resilience Program



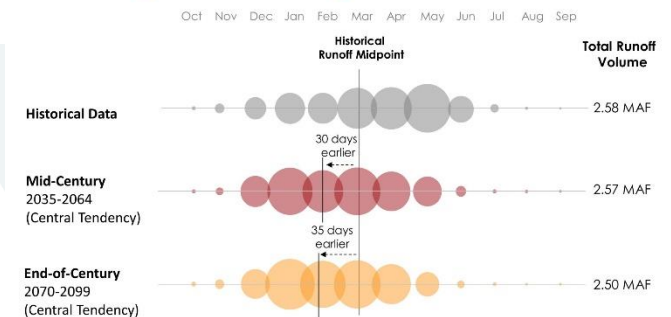
September 10, 2020

# Challenges for our Water Supply

- Regulations
  - Water Quality Control Plan
  - Droughts (TUCPs)
- Climate Change
  - Changes in Hydrology
  - Threats to Water Supply
- Response to the Challenges
  - Engage effectively
  - Seek assistance to make our water supply resilient
- Staff Bandwidth



## Changes in Timing of Inflow to Folsom



MAF = million acre-feet

Inflow to Folsom could occur **30 to 40 days earlier** on average.

## Two Subscription Programs:

- To hire an RWA staff member
  - Highly Qualified
  - Deep California Water Experience
- Major Projects Management Services
  - To provide staffing services to facilitate and work for the surface water agencies on regulatory programs
- Resilience Program
  - To provide staff bandwidth to execute elements of the Strategic Plan
  - Assist and Facilitate the implementation of the Groundwater Bank
  - Assist with projects and programs that facilitate improved water supply



- **Planning Goal**
  - Water Bank Engagement with Stakeholders for acceptance, approval and support
  - Engagement with partners
- **Implementation Goal**
  - Funding
  - IRWM (CABY)
  - Support Region's Efforts on Delta Initiatives
  - Support Planning and construction of regional infrastructure for Reliability and Resilience
- **Communication Goal**
  - Single, coordinated voice
  - Inform Federal and State decision makers about key issues
  - Work with State and Federal Agencies that influence or manage resources

- **Advocacy Goal**

- Advocate on positions for state and federal legislation
- Educate decision makers and promote our region's contribution to the Delta
- Support efforts for expanding conjunctive use operations
- Support an American River Flow Management Standard
- Work with the State to help implement the Water Resilience Portfolio where it aligns with the Region's Interests



- **Will these two programs raise RWA dues?**

No, These programs are voluntary subscription programs.

- **If all the RWA members benefiting from these two programs, why are they not part of the core dues?**

The member agencies that are proposing the programs do not want to raise core dues for all, but they want services to improve resilience and ensure regulations do not hamper their water entitlements

- **Can my agency join the Resilience Program?**

Yes!

- **Will subscriptions to these programs be in place before the new staffer is hired?**

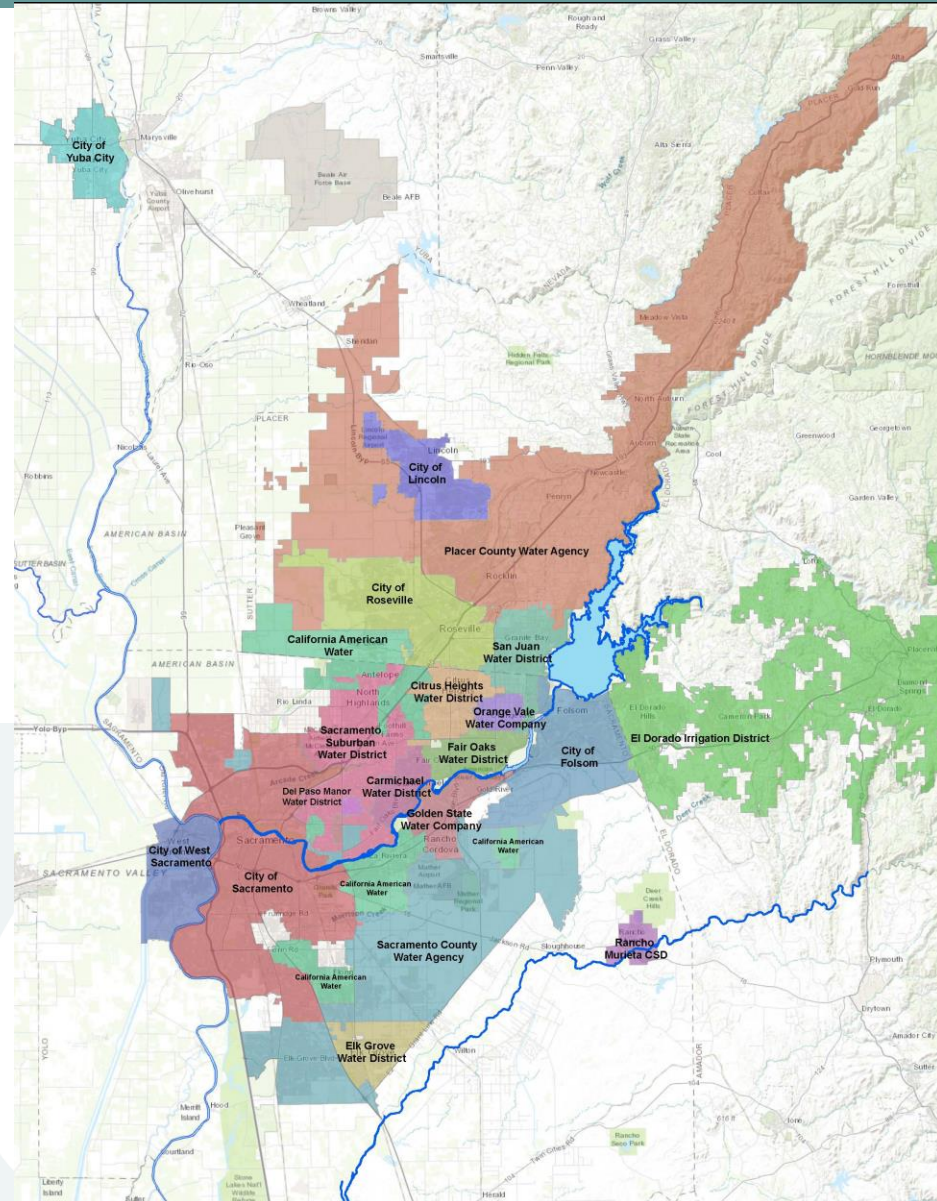
Yes!

## Major Projects Management Services:

Roseville, Sacramento, Folsom, Sacramento County WA, EID, PCWA, SJWD, SSWD, GSWC, CWD

## Resilience Program:

Roseville, Sacramento, Sacramento County WA, EID, PCWA, GSWC, EDWA



# Questions

