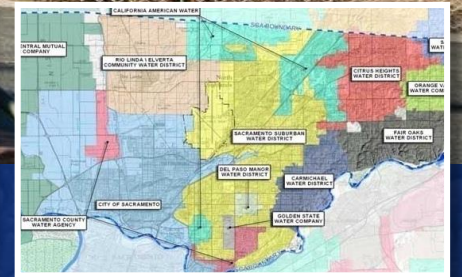


Report of the 3x3 RWA-SGA-SCGA ad hoc committee



Origins of the Groundwater Sustainability Agencies

- Water Forum Agreement Groundwater Element
 - Coordination was always envisioned in the WFA.
 - “Safeguard the viability of the total basin through coordination of policies and activities across the three sub-areas of the basin”
 - “Facilitate cooperation among the three sub-areas on projects or programs of mutual benefit”
 - “Promote efficient operation through cost-sharing arrangements, shared staff, equipment, facilities, etc. if possible and appropriate”
- SGMA responsibilities

History - SCGA interest in RWA Staffing

- SCGA Strategic Plan
 - “Consider status quo, merger with SGA, or other measures to most effectively and efficiently govern”
 - “Create new governance to foster independence, transparency, accountability, and cost efficiency as it relates to the long term management of the basin.”
- August 2019 – 2x2 meetings
- December 2019 – RWA Presentation to SCGA Board
- March 2020 – Water Forum “white paper” presentation
- July 2020 – RWA-SGA-SCGA MOU adopted

3x3 Committee

- Chair and vice chair +1 from RWA, SGA, SCGA
- What have they discussed?
- Direction given to staff
 - Next steps for approval of SGA and SCGA boards and RWA EC in December

RWA: Kerry Schmitz (Sacramento County Water Agency), Sean Bigley (City of Roseville) , Cathy Lee (Carmichael Water District)

SGA: Caryl Sheehan (Citrus Heights Water District), Brett Ewart (City of Sacramento), Robert Reisig (Rio Linda Elverta Community Water District)

SCGA: Todd Eising (City of Folsom), Paul Schubert (Golden State Water Co.), Dalia Fadl (City of Rancho Cordova)

What we think the Authorities want?

- SCGA: Independent Staffing from the current County arrangement
- Lower costs to the members
- Improved/expanded services
- Better Coordination
- SCGA and SGA: Successful Implementation of SGMA

Benefits

- Economies of scale
- Improved regional coordination on GW banking and other issues
- Coordinated SGMA compliance in NA and SA subbasins
- Opportunities for sharing staff to right-size all three organizations
- Additional source of stable funding for RWA

Background - JPA Signatories

SGA JPA Signatories	SCGA JPA Signatories
Sacramento County	Sacramento County
City of Folsom	City of Folsom
City of Sacramento	City of Sacramento
City of Citrus Heights	
	City of Elk Grove
	City of Rancho Cordova

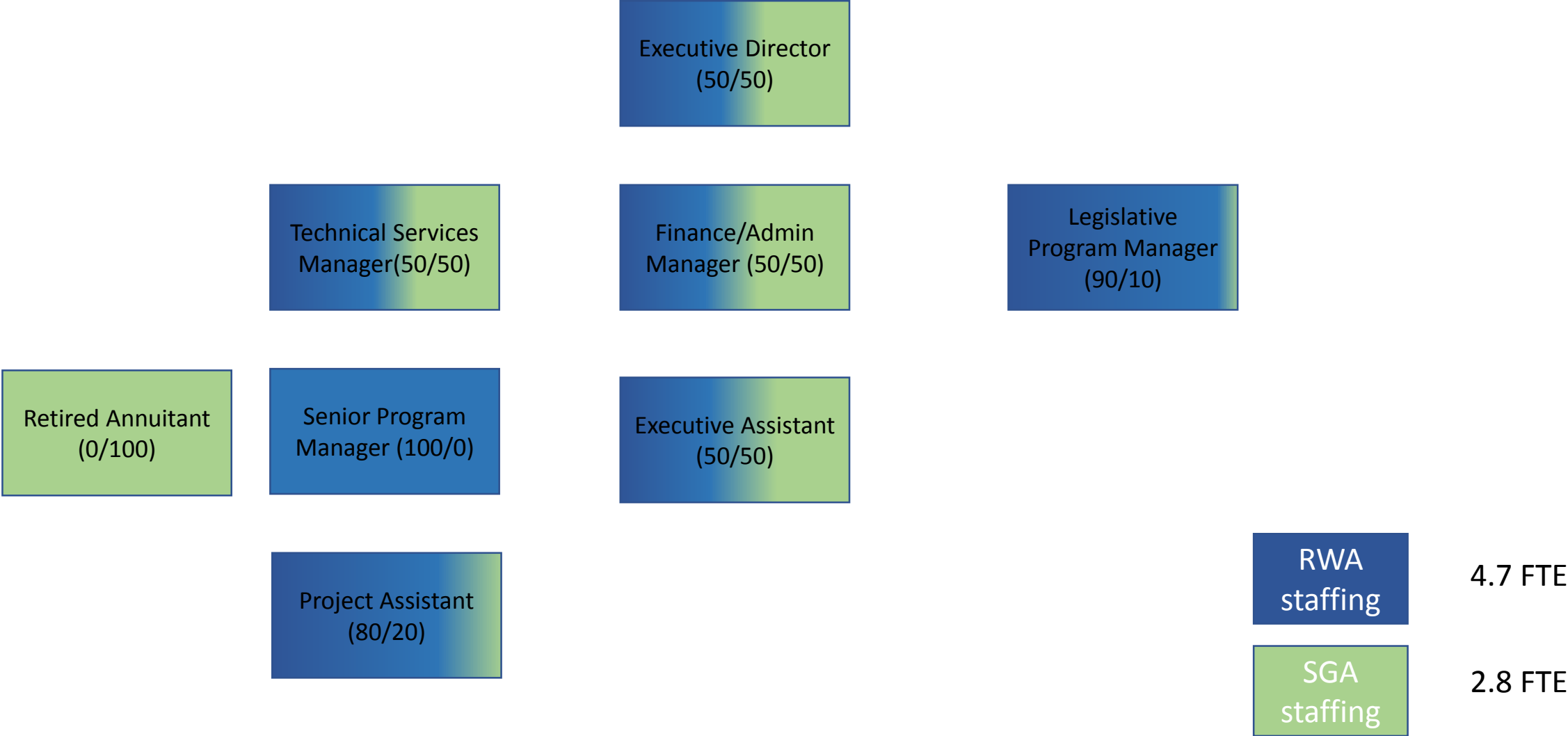
Background - Board Representation

Agency	RWA	SGA	SCGA
California American Water	Member	Member	Member
Carmichael Water District	Member	Member	
Citrus Heights Water District	Member	Member	
City of Elk Grove			Member
City of Folsom	Member	Member	Member
City of Lincoln	Member		
City of Rancho Cordova			Member
City of Roseville	Member		
City of Sacramento	Member	Member	Member
City of West Sacramento	Member		
City of Yuba City	Member		
Del Paso Manor Water District	Member	Member	
El Dorado Irrigation District	Member		
Elk Grove Water District	Member		Member
Fair Oaks Water District	Member	Member	
Golden State Water Company	Member	Member	Member
Orange Vale Water Company	Member	Member	
Placer County Water Agency	Member		
Rancho Murieta Community Services District	Member		Member
Rio Linda/Elverta Community Water District		Member	
Sacramento County Water Agency	Member	Member	Member
Sacramento Suburban Water District	Member	Member	
San Juan Water District	Member	Member	
County of Placer	Associate		
El Dorado County Water Agency	Associate		
Sacramento Area Flood Control Agency (SAFCA)	Associate		
Sacramento Municipal Utility District (SMUD)	Associate		
Sacramento Regional County Sanitation District	Associate		Member
Agriculture		Member	Member
Natomas Central MWC		Member	
Self Supplied Industry		Member	Member
Agricultural-Residential			Member
Conservation Landowners			Member
Public Agencies Self-Supplied			Member

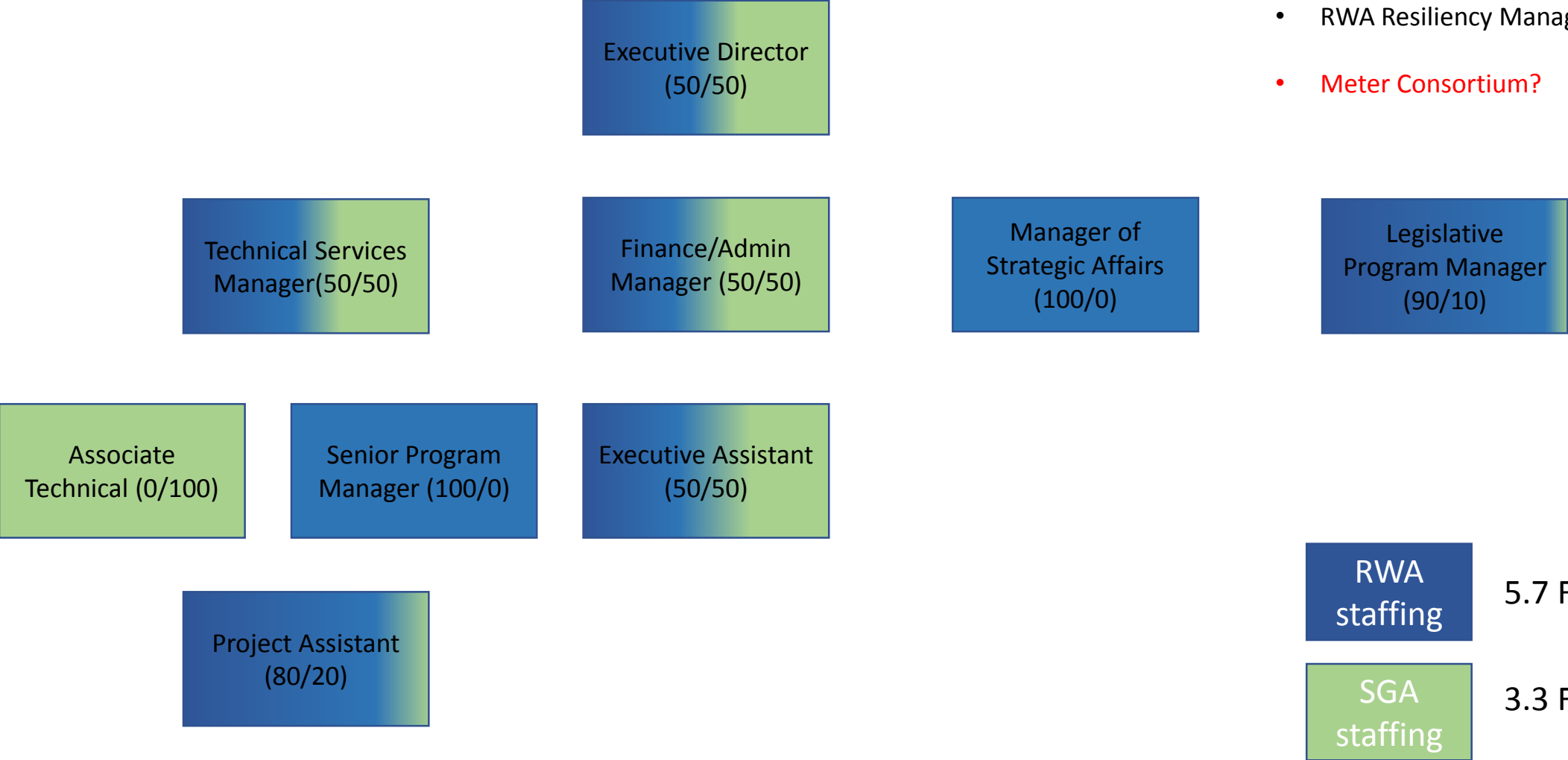
Potential Staffing Plans and Costs

- Current RWA and SGA
- Proposed RWA and SGA
- Proposed RWA-SGA-SCGA
- Recommended RWA-SGA*

RWA-SGA Current Staffing



RWA-SGA Future Staffing



Adds

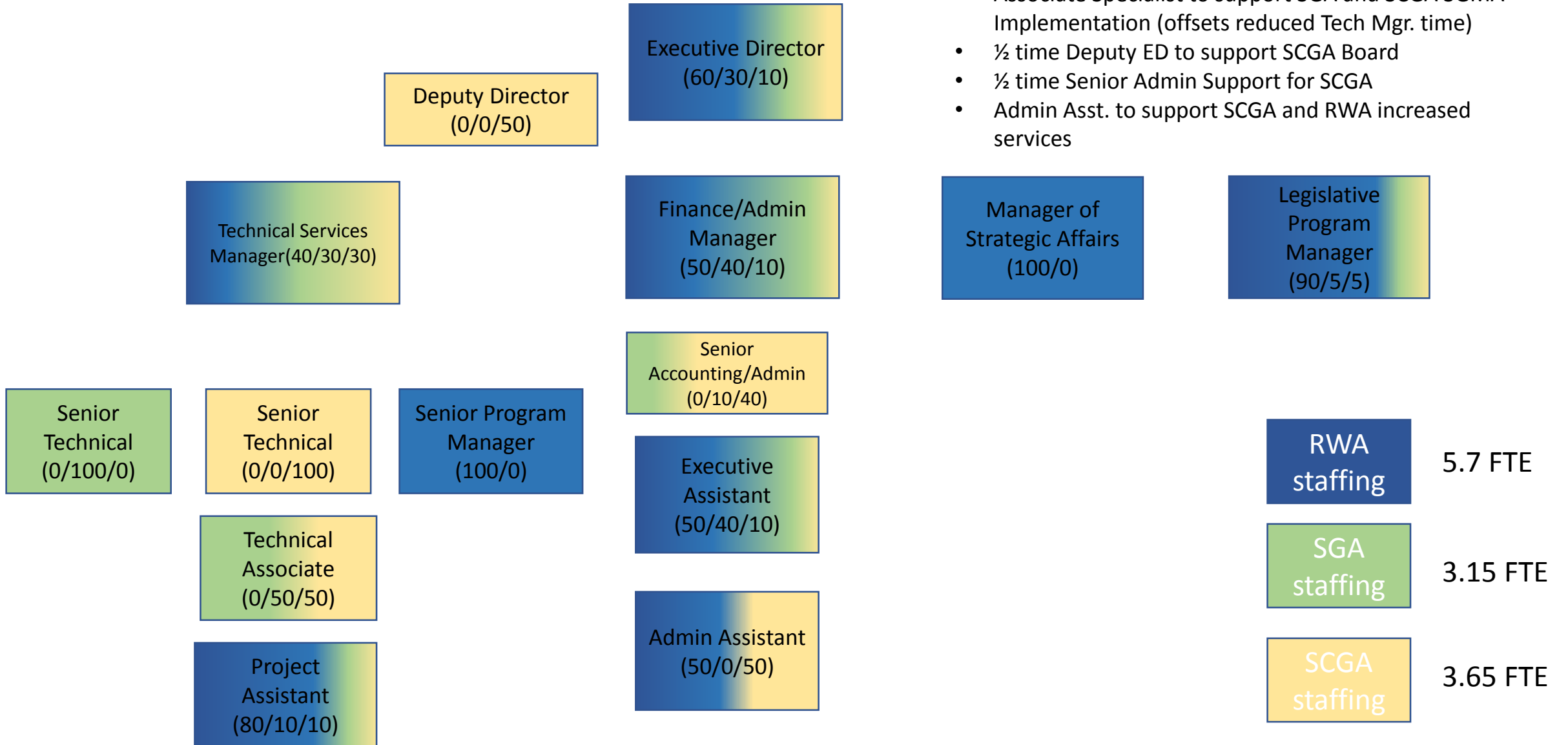
- Associate Specialist for SGA SGMA implementation
- RWA Resiliency Manager
- **Meter Consortium?**

Current and Proposed RWA & SGA Staffing

Staffing	Current RWA-SGA		
	RWA	SGA	SCGA
Executive Director	50%	50%	
Deputy Director			
Technical Services Manager	50%	50%	
Retired Annuitant		50%	
Senior Speicalist - North American			
Senior Specialist - South American			
Senior Program Manager (WEP)	100%		
Associate Specialist			
Project Assistant	80%	20%	
Finance/Admin Manager	50%	50%	
Deputy Admin Manager			
Executive Assistant	50%	50%	
Admin Assistant			
Manager of Strategic Affairs			
Legislative Program Manager	90%	10%	
FTE	4.7	2.8	
Loaded Labor Costs	\$883,864	\$509,155	

Staffing	Proposed RWA-SGA		
	RWA	SGA	SCGA
Executive Director	50%	50%	
Deputy Director			
Technical Services Manager	50%	50%	
Retired Annuitant			
Senior Speicalist - North American			
Senior Specialist - South American			
Senior Program Manager (WEP)	100%		
Associate Specialist		100%	
Project Assistant	80%	20%	
Finance/Admin Manager	50%	50%	
Deputy Admin Manager			
Executive Assistant	50%	50%	
Admin Assistant			
Manager of Strategic Affairs	100%		
Legislative Program Manager	90%	10%	
FTE	5.7	3.3	
Loaded Labor Costs	\$1,155,783	\$614,155	

RWA-SGA-SCGA Future



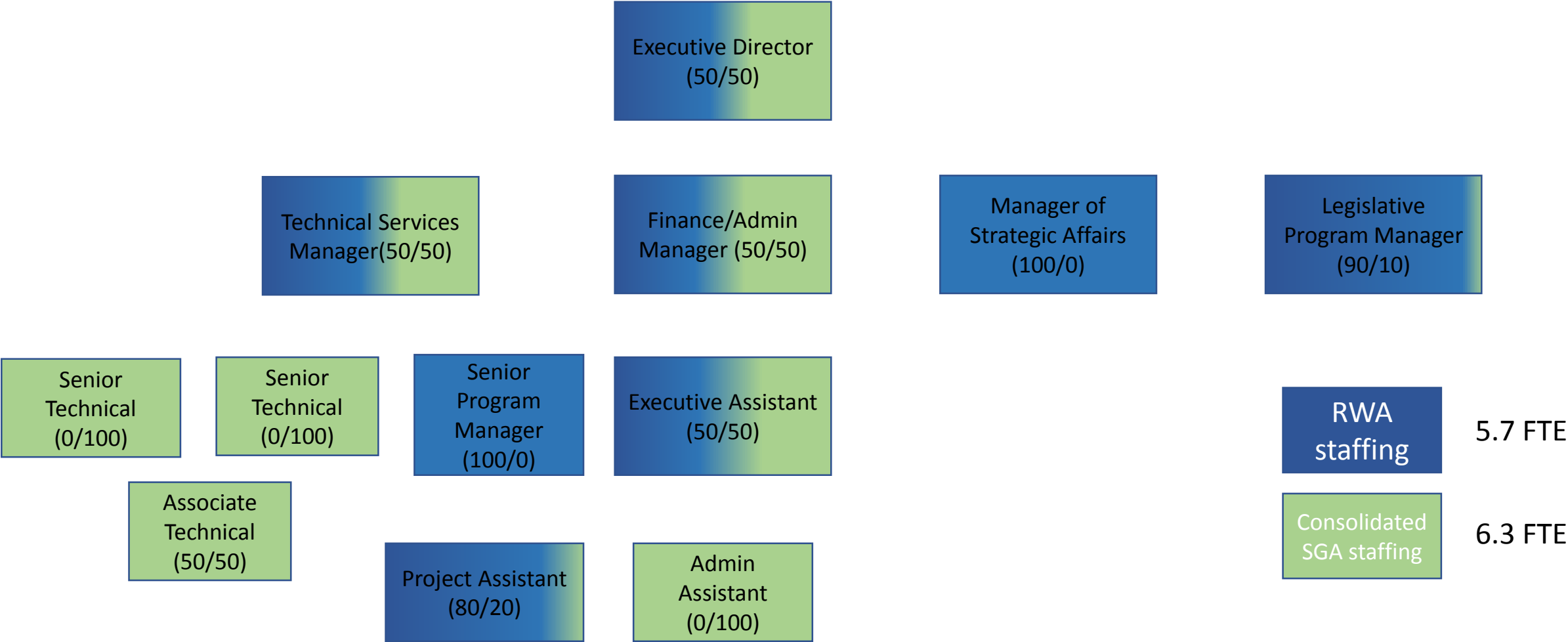
Adds

- Senior Specialist for SCGA SGMA implementation
- Associate Specialist to support SGA and SCGA SGMA Implementation (offsets reduced Tech Mgr. time)
- ½ time Deputy ED to support SCGA Board
- ½ time Senior Admin Support for SCGA
- Admin Asst. to support SCGA and RWA increased services

RWA-Consolidated SGA Future

Consolidation reduces need for

- ½ time Deputy Director
- ½ time Deputy Admin Mgr.



Independent SCGA and SGA Consolidation

Staffing	Independent SCGA added		
	RWA	SGA	SCGA
Executive Director	60%	30%	10%
Deputy Director			50%
Technical Services Manager	40%	30%	30%
Retired Annuitant			
Senior Speicalist - North American		100%	
Senior Specialist - South American			100%
Senior Program Manager (WEP)	100%		
Associate Specialist		50%	50%
Project Assistant	80%	10%	10%
Finance/Admin Manager	50%	40%	10%
Deputy Admin Manager		10%	40%
Executive Assistant	50%	40%	10%
Admin Assistant			50%
Manager of Strategic Affairs	100%		
Legislative Program Manager	90%	5%	5%
FTE	5.7	3.2	3.7
Loaded Labor Costs	\$1,162,739	\$605,717	\$675,842

Staffing	SGA Consolidation	
	RWA	SGA
Executive Director	50%	50%
Deputy Director		
Technical Services Manager	50%	50%
Retired Annuitant		
Senior Speicalist - North American		100%
Senior Specialist - South American		100%
Senior Program Manager (WEP)	100%	
Associate Specialist		100%
Project Assistant	80%	20%
Finance/Admin Manager	50%	50%
Deputy Admin Manager		
Executive Assistant	50%	50%
Admin Assistant		100%
Manager of Strategic Affairs	100%	
Legislative Program Manager	90%	10%
FTE	5.7	6.3
Loaded Labor Costs	\$1,155,783	\$1,120,955

Alternative Governance

- SCGA merger with SGA into a single JPA
 - Pros
 - Reduced overhead of 1 organization vs. 2
 - Common administrative policies and procedures adds efficiency
 - Fewer board meetings for staff and members
 - Reduces ED bandwidth demands
 - No CalPERS requirements for SCGA
 - Reduced legal costs – 1 attorney vs. 2
 - Reduced administrative costs - 1 set of books vs. 2, reduced audit costs
 - Flexibility to adjust staffing needs in annual budgets
 - Cons
 - Requires re-negotiated JPA
 - Perception of reduced representation

SCGA – SGA

Similarities and Differences

- 3 common signatories (Sac County, Sacramento, Folsom)
- Non-water provider cities have board seats on SCGA (EG, RC), not on SGA (CH)
- Public water suppliers have elected officials appointed to SGA. Staff may be appointed on SCGA
- Both have agricultural and self-supplied industry board seats
- SCGA has additional seats for self-supplied public agency, ag-res, conservation landowners

Governance Concepts

- Six member JPA
 - Sac County, Citrus Heights, Elk Grove, Folsom, Sacramento, Rancho Cordova
- 23 member Board of Directors
 - 6 signatories (above)
 - 12 water suppliers (special districts, mutual, investor owned)
 - 5 stakeholder reps (ag, ag-res, self supplied industrial/commercial, self supplied public agency, conservation landowners)
- North American Advisory Committee
 - Approves program budgets and actions
- South American Advisory Committee
 - Approves program budgets and actions

Questions?