



RWEPAC

January 10, 2023

WELCOME

Introductions

- Name
- Organization
- Jacket or Umbrella?
- Or 2023 Goal?



Art Institute Lions
@ChicagoLions

Umbrellas beaten and trashed filling trash cans. Classic Chicago image on a windy, chilly, rainy day like today.



1:35 PM · May 28, 2021

BE WATER SMART

Agenda

- November 2022 Meeting Notes
- Land IQ CII DIM Study Launch
- WEP Program Administrative Discussion
- SB 606/AB 1668 Budget Assessment
- Rachio Program Update
- Agency Announcements/Adjournment
- Lunch @ 11:30

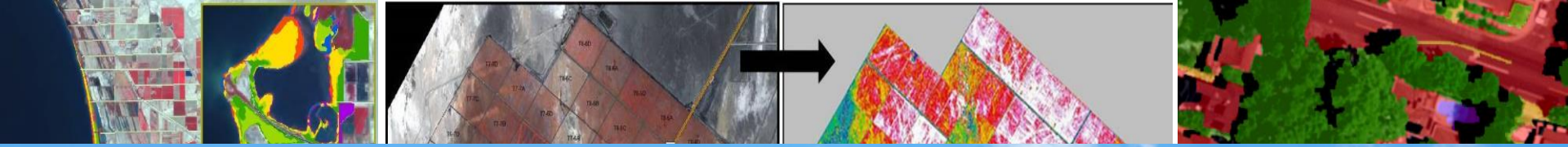


BE WATER SMART

Meeting Notes

- November 2022
- Approve and post online?



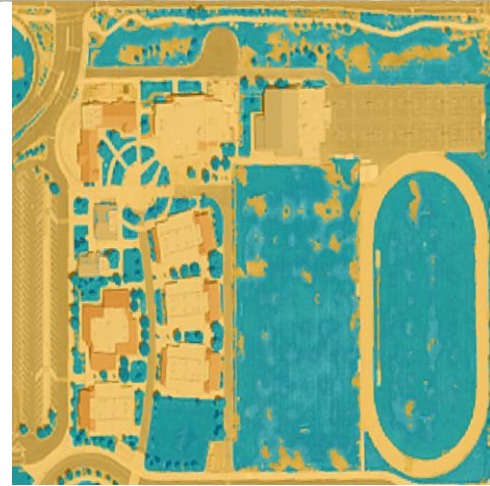


Regional Water Authority

CII DIM Measurement



Adriana Delucchi, CCA, CAIS
January 10, 2023



URBAN WATER USE OBJECTIVE (UWUO)

- California SB 606 and AB 1668 require the creation of an UWUO
- UWUO Components
 1. Residential – Indoor
 2. Residential – Outdoor (e.g., LAM work)
 3. Commercial, Industrial, Institutional (CII) – Outdoor
 4. Water Losses
 5. Approved Variances

Bonus: Potable reuse water incentive
- Must also have CII Performance Measures (separate from UWUO)

UWUO - CII

Commercial, Industrial, and Institutional



Commercial, Industrial, Institutional (CII) – Outdoor

- Only applies to existing dedicated irrigation meters (DIMs) OR landscape areas greater than 1 acre (parcel basis)
- Based on landscape area
- Convert mixed use meters (> 1 ac) to DIM or in-lieu tech
- Some Special Landscape Areas (SLAs)
- Some Exempt Landscape Areas



SPECIAL LANDSCAPE AREAS

- Community Gardens (food production)
- Recreational areas
- Areas irrigated with recycled water
- Bioengineered slopes
- Public swimming pools
- Supplemental water for ponds, wildlife, etc.

Two Variances:

- 1) Use of recycled water at > 900 mg/L TDS; increase in EFT for leaching fraction
- 2) Significant water use for wildlife



EXEMPT LANDSCAPES

Excluded from UWUO

- Registered historical sites
- Ecological projects with temp. irrigation
- Mine Reclamation projects with temp. irrigation (pre-2015)
- Public plant collections, botanical gardens, arboretums (pre-2015)
- Cemeteries (pre-2015)



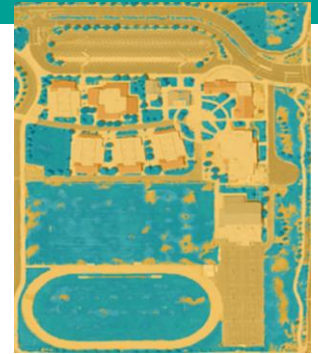
CII – OUTDOOR CALCULATIONS

Allowable water budget dependent on timing of landscape installation

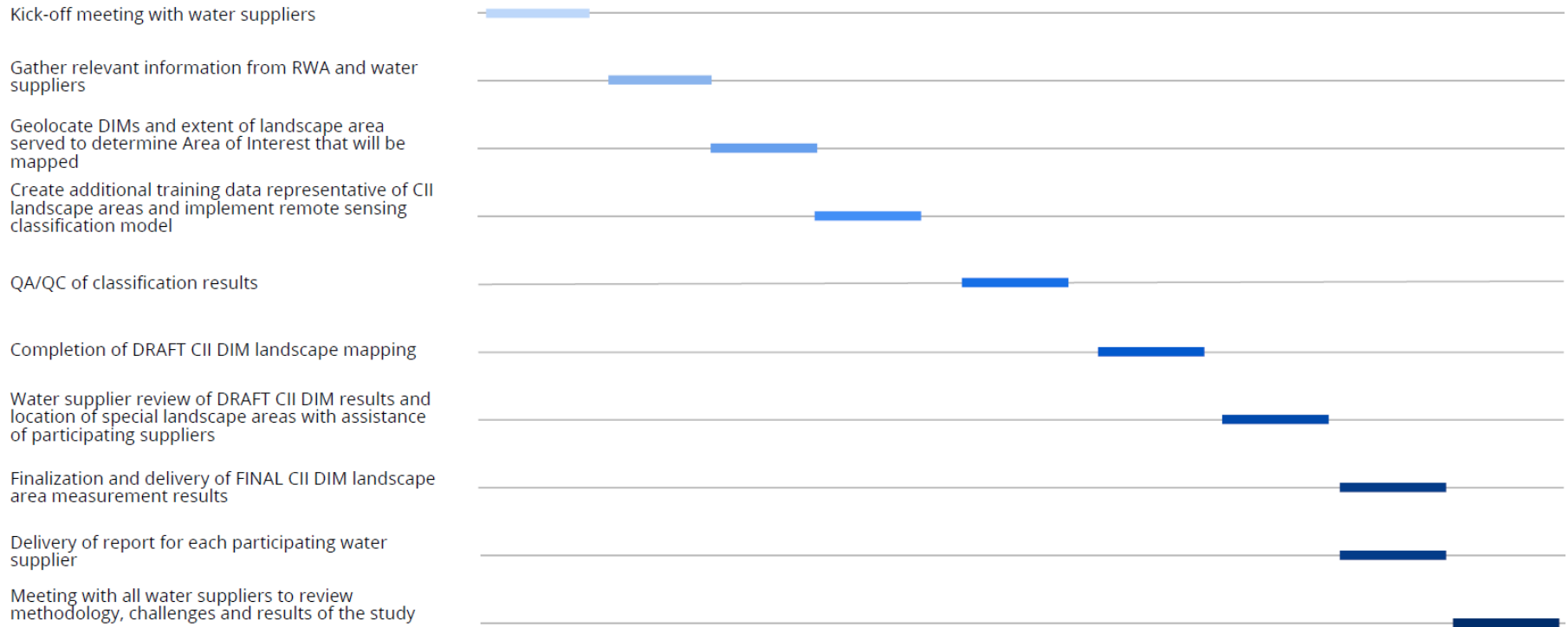
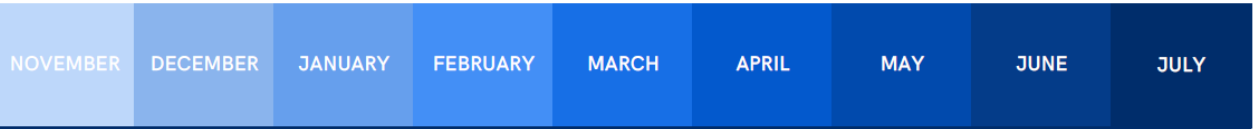
- Pre-2019, factor of 0.8 decreasing to 0.63 in 2030
- Post-2019, factor of 0.45
- Special Landscape Areas, factor of 1.0



PROJECT INFORMATION



Timeline



DATA NEEDS

- 10/16 participating water suppliers have NOT sent over data
- Cannot begin until we have received EVERYONE'S data
- No later than **1/18/23**
 - Preferred: shapefile or tabular with x, y data
 - Next Best: tabular data with either APN or address
 - Number, street, and city required for address information
 - Cannot locate off of an intersection alone
 - Any other information specific to agency
 - Optional: Meter reading data for 1 year timeframe



RESULTS

What to Expect



RESULTS

- Measurement based on 2018 Eagle Aerial
- Remote sensing landscape mapping at the classification level
 - trees, lawn, ground cover, bare earth, water, hardscape
 - II, NI
- Web Tool to View Results
 - Water Supplier Review
 - Individual classification units
 - Special Landscape Area identification
 - Exempt Landscape identification



RESULTS

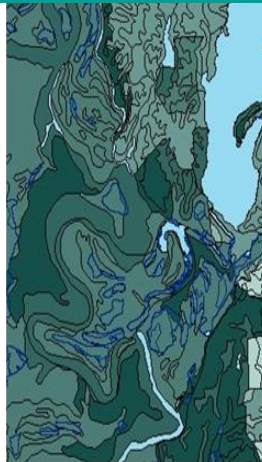
- Report and Deliverables
 - Accuracy assessment
 - Tabular and spatial with associated meter information provided
 - Individual landscape classification and rolled up to DIM level
 - Notation of any SLA's or Exempt areas identified by water suppliers



CONTACT INFO

adelucchi@landiq.com

(209) 479-4336



BE WATER SMART

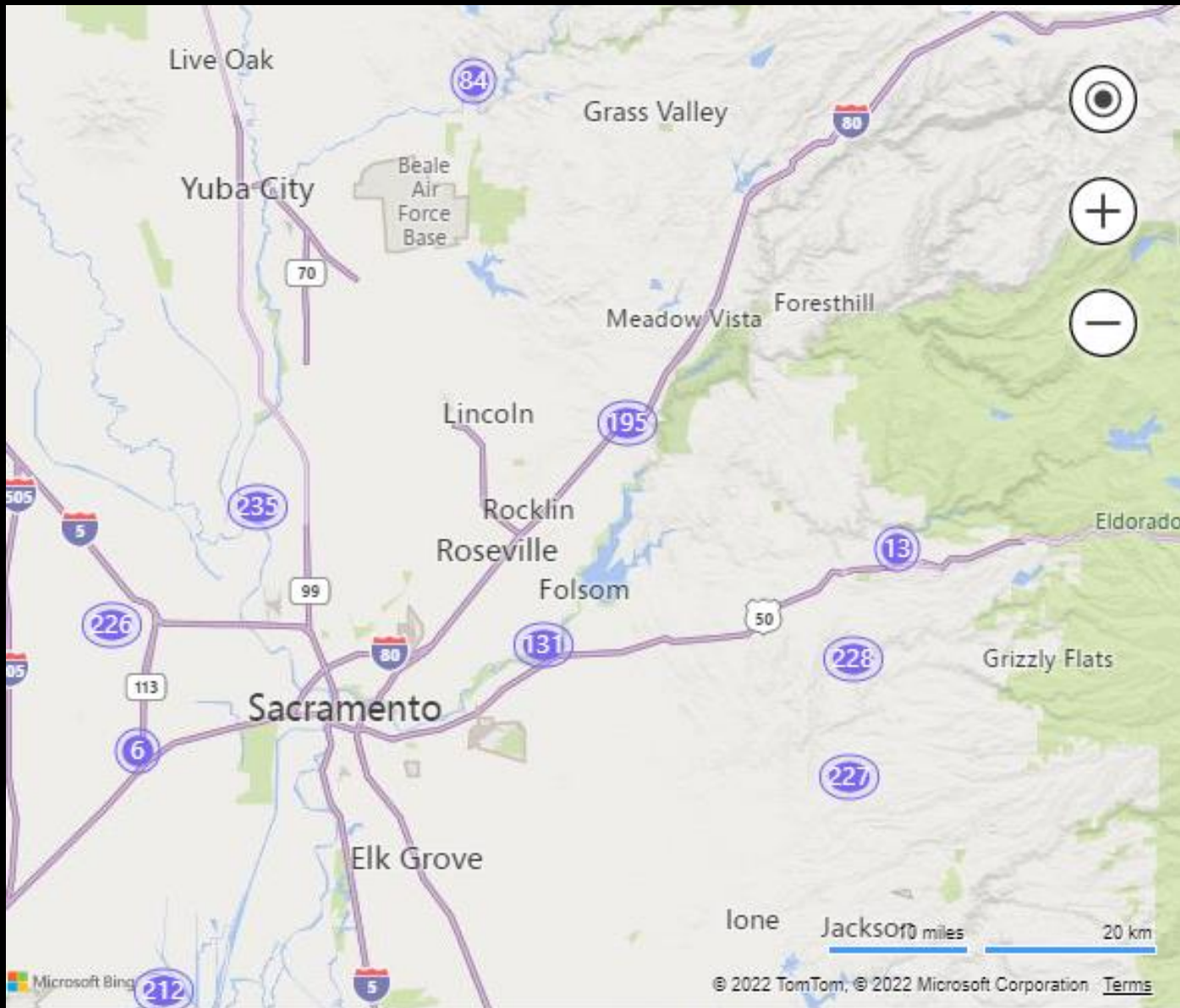
Land IQ Outdoor Study

- Project timeline January 2023 – summer 2023
- Grant funded \$100,000!
- Sending around data requests from me and Adriana
 - **DEADLINE IS JANUARY 18th** 😊😊😊😊😊
 - Need Update from:
 - Golden State Water Company
 - Placer County Water Agency
 - Sacramento County Water Agency
 - Other consultant contracts/internal work ok! Compare results?



RWEPAC Admin/Housekeeping

- Anyone want to join the Leadership Team?
 - Chris, Don, William and Greg – it's a party!
- In person meetings with or without virtual option?
 - Move around or at RWA?
- Bring back Water Taste Test?
- Changes to website? What do you like? Annoying? Missing? Deleted?
- Quarterly networking lunches like holiday social?
- AWE, CalWEP and Sac Tree Board positions
- CIMIS Maintenance, thinking about another station
- Fieldtrips/Tours?
- Anything else?



BREAK TIME!!!



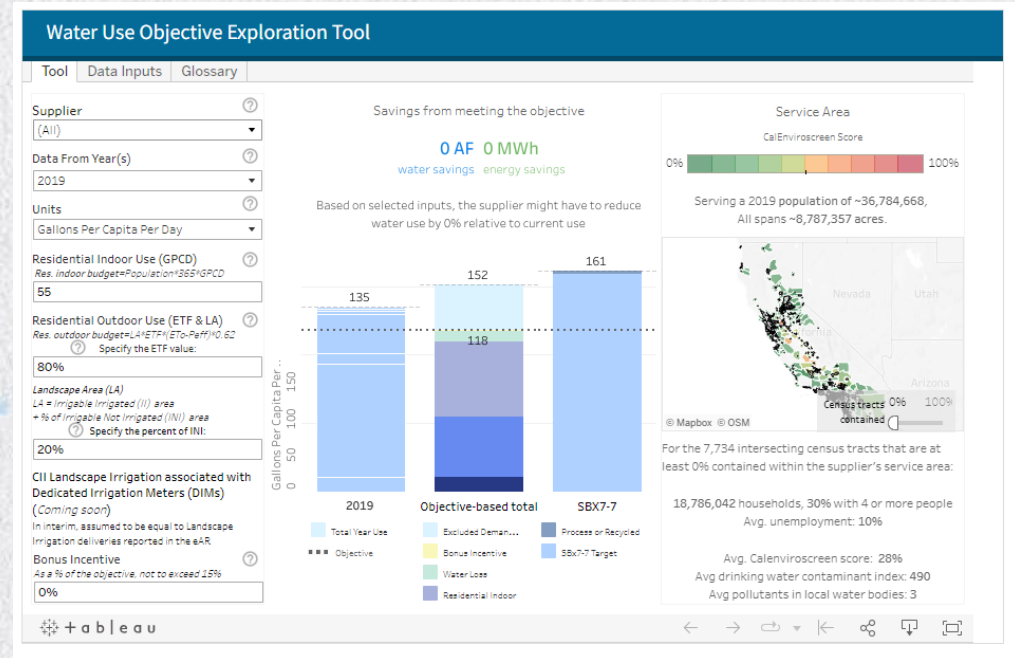
makeameme.org

SB 606/AB 1668 Supplier Budgets

- Created supplier specific target estimates using

- RWA Monthly R-GPCD Data
- SWB online calculator https://www.waterboards.ca.gov/water_issues/programs/conservation_portal/reg/s/objective-exploration.html
- Current DWE Standard recommendations as stated in 9-29-2022 memo

- Take results with grain of salt



Residential Indoor and Outdoor Standards

Water Agency	2020-2022 Average R-GPCD	Target with the following assumptions: 55 gallons indoor, .8 outdoor + 20% INI (2023-2025)	Percent Reduction/Increase- Column B and Column D	Target with the following assumptions: 47 gallons indoor, .8 outdoor + 20% INI (2025-2029)	Percent Reduction/Increase- Column B and Column F
Supplier 1	95	108	13%	100	5%
Supplier 2	174	181	4%	173	-1%
Supplier 3	138	149	8%	141	2%
Supplier 4	147	129	-12%	121	-18%
Supplier 5	137	141	3%	133	-3%
Supplier 6	118	124	6%	116	-1%
Supplier 7	100	104	4%	96	-4%
Supplier 8	100	109	9%	101	1%
Supplier 9	115	110	-4%	102	-11%
Supplier 10	166	210	26%	202	22%
Supplier 11	105	142	36%	134	28%
Supplier 12	187	195	4%	187	0%
Supplier 13	149	123	-18%	115	-23%
Supplier 14	119	198	66%	190	59%
Supplier 15	149	264	77%	256	72%
Supplier 16	135	125	-7%	117	-13%
Supplier 17	110	122	10%	114	3%
Supplier 18	338	293	-13%	285	-16%
Number of Suppliers over Budget			5		9
Average	143	157	12%	149	6%
Over budget starting in 2023					
Over budget starting in 2025					
Over budget starting in 2030					
Under budget					

CII Dedicated Irrigation Meter Landscape Budgets not included.

Residential Indoor and Outdoor Standards

Water Agency	2020-2022 Average R-GPCD	Target with the following assumptions: 42 gallons indoor, .63 outdoor + 20% INI (2030 and beyond)	Percent Reduction/Increase- Column B and Column G	Target with the following assumptions: 42 gallons indoor, .63 outdoor + 0% INI (2030 and beyond)	Percent Reduction/Increase- Column B and Column I (Current Worst Case Scenario)
Supplier 1	95	84	-12%	79	-17%
Supplier 2	174	141	-19%	134	-23%
Supplier 3	138	116	-16%	111	-19%
Supplier 4	147	100	-32%	98	-33%
Supplier 5	137	110	-20%	106	-23%
Supplier 6	118	96	-18%	96	-18%
Supplier 7	100	81	-19%	77	-23%
Supplier 8	100	84	-16%	81	-19%
Supplier 9	115	85	-26%	81	-29%
Supplier 10	166	164	-1%	151	-9%
Supplier 11	105	110	5%	104	-1%
Supplier 12	187	152	-19%	142	-24%
Supplier 13	149	96	-36%	94	-37%
Supplier 14	119	155	30%	145	21%
Supplier 15	149	207	39%	189	27%
Supplier 16	135	97	-28%	95	-29%
Supplier 17	110	95	-14%	91	-18%
Supplier 18	338	229	-32%	214	-37%
Number of Suppliers over Budget			15		16
Average	143	122	-13%	116	-17%
Over budget starting in 2023					
Over budget starting in 2025					
Over budget starting in 2030					
Under budget					

CII Dedicated Irrigation Meter Landscape Budgets not included.

Water Loss Standards

Water Agency	Current Water Loss 2017-2020 (Gallons per connection per day)	Water Loss Standard September 2022 (Gallons per connection per day)	Percent Reduction Required	Number of reduction points needed to meet Standard	Modified Model Inputs Approved by SWB
System 1	11.3	11.3	0%	0	
System 2	21.9	14.9	32%	7	
System 3	31.3	16.9	46%	14	
System 4	33.8	16.6	51%	17	
System 5	9.3	9.3	0%	0	
System 6	86.3	18.2	79%	68	
System 7	33.7	33.7	0%	0	
System 8	30.4	22.7	25%	8	
System 9	41.1	41.1	0%	0	Yes
System 10	115.1	14.0	88%	101	
System 11	38.0	38.0	0%	0	
System 12	92.5	40.9	56%	52	
System 13	13.0	13.0	0%	0	
System 14	26.0	20.0	23%	6	
System 15	109.3	14.5	87%	95	
System 16	No data	No data	No data	No data	
System 17	55.0	21.9	60%	33	
System 18	46.0	21.4	53%	25	
System 19	164.9	30.7	81%	134	
System 20	157.8	22.2	86%	136	
System 21	278.8	15.0	95%	264	
System 22	94.5	15.4	84%	79	
System 23	60.8	17.3	72%	44	
System 24	20.2	20.2	0%	0	Yes
System 25	45.9	45.9	0%	0	Yes
Average	67	22	42%	45	
Minimum	9.3	9.3	0%	0	
Maximum	278.8	45.9	95%	264	
Above a 30% reduction required					

SB 606/AB 1668 Supplier Budgets-Next Steps

- Lots of SWB meetings in 2023 (schedule below)
 - Focused on residential outdoor, CII DIM and CII Performance Measures
 - Attend if interested, SWB looking for new suppliers to comment
- Supplier specific assessment
 - Contact Amy if you want a one-on-one assessment session based on spreadsheet results
 - Goal is no surprises!!!!
- What now?
 - What can RWA do
 - What can suppliers do

Task	Start date	End Date
Start rulemaking (First public comment period)	January 2023	March 2023
Second comment period	May 2023	July 2023
Adoption hearing	Early Fall 2023	
Submit to OAL	Late Fall 2023	
Rulemaking becomes effective	January 2024	

BE WATER SMART

Rachio Controller Program

- Regional transition to local programs
 - CWD, SJWD and Folsom
 - Using Prop 1 rebate funding to reimburse costs
 - 2,400 controller sent out so far
 - <https://rwa.rachio.com/>
- Online – direct delivery to customer
- Customer pays \$75, supplier pays \$100 (plus tax)
- Less/no cost share option available now
- Contact Amy or Danielle if interested



- **Danielle Cumming** | Senior Manager of Utility
- danielle@rachio.com
- [rachio.com](https://rwa.rachio.com/)



BeWaterSmart.info

BE WATER SMART

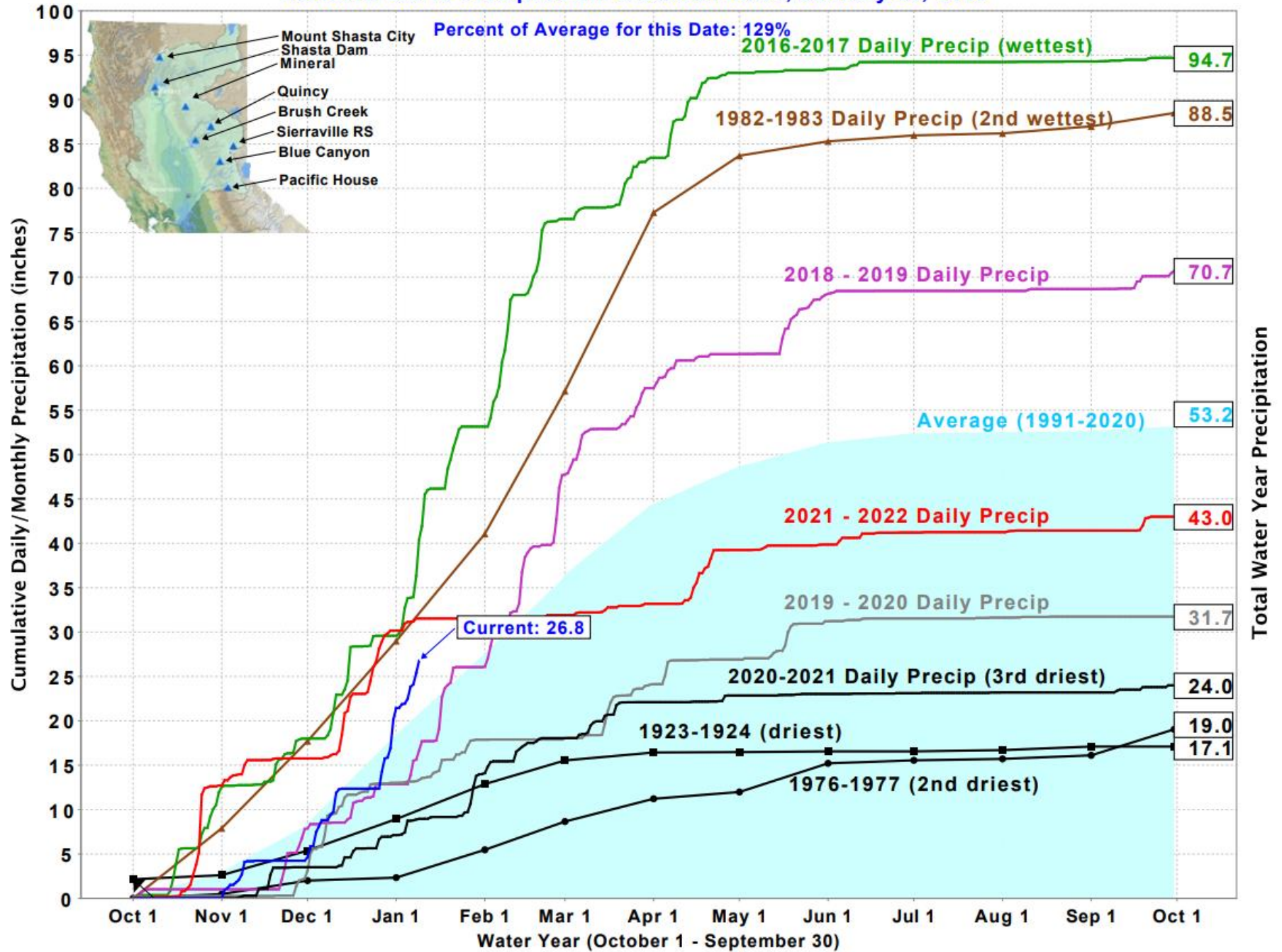
Indoor Direct Installation Program RFP

- Urban and Multibenefit Drought Relief Grant funding
- Multifamily and Commercial/Institutional, DACs
- Toilets, urinals, showerheads, & aerators
- 1,400 fixtures total
- \$500,000 budget
- Project timeline – March 2023-December 2024
- RFP Released on January 4th
- **Need review panel volunteers (Feb 2 -13th)**



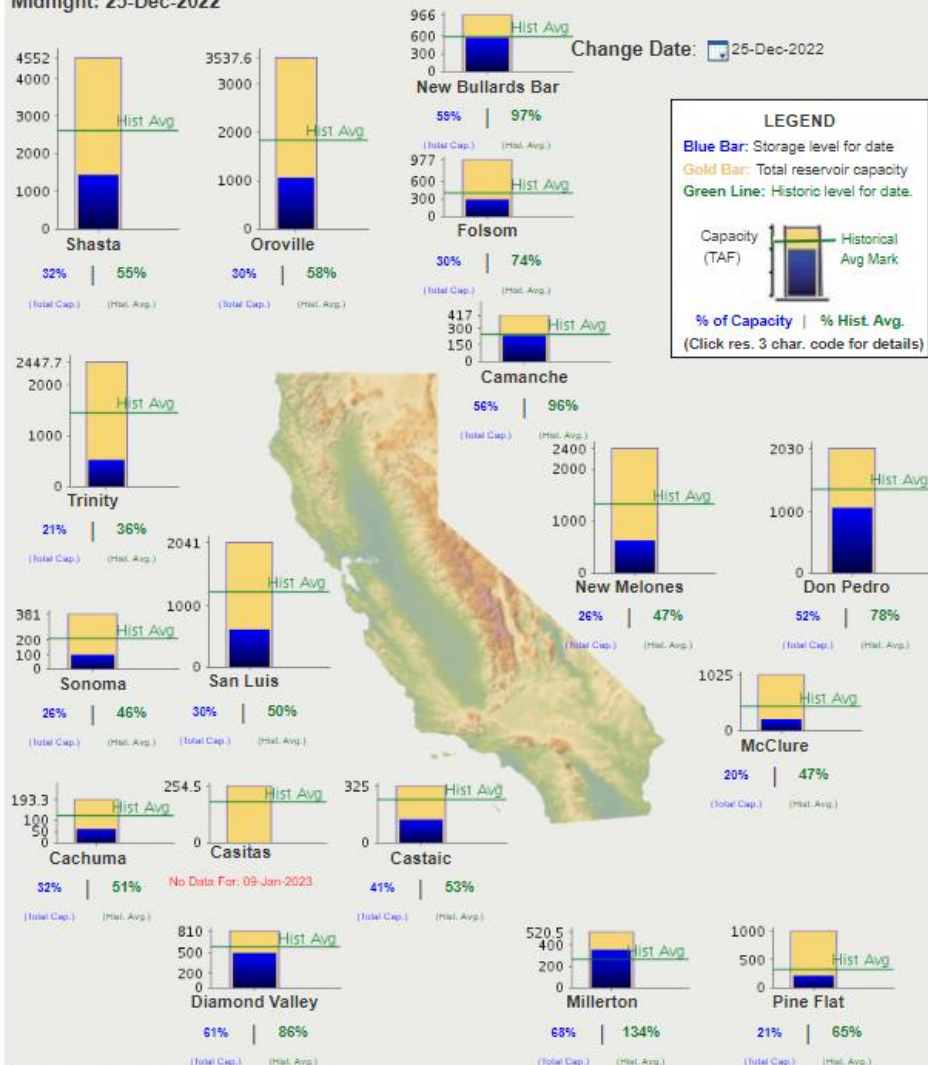
BeWaterSmart.info

Northern Sierra Precipitation: 8-Station Index, January 09, 2023



CURRENT CONDITIONS: MAJOR WATER SUPPLY RESERVOIRS:25-DEC-2022

Midnight: 25-Dec-2022



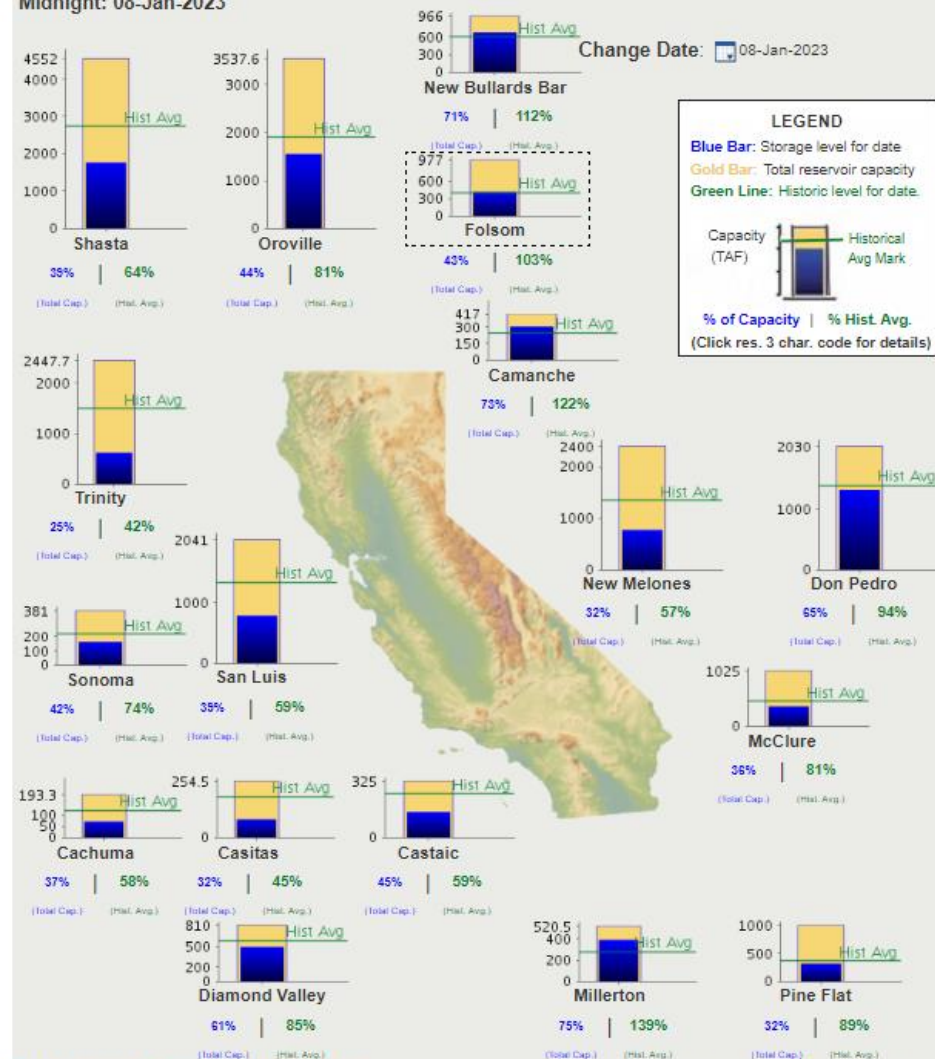
[Click for printable version of current data.](#)

Report Generated: 09-Jan-2023 4:45 PM

The CSI link has been disabled to zoom in, for the lack of historical data.

CURRENT CONDITIONS: MAJOR WATER SUPPLY RESERVOIRS:08-JAN-2023

Midnight: 08-Jan-2023



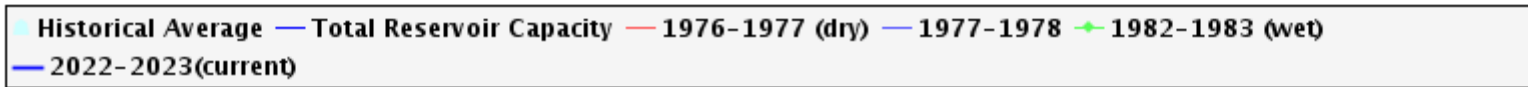
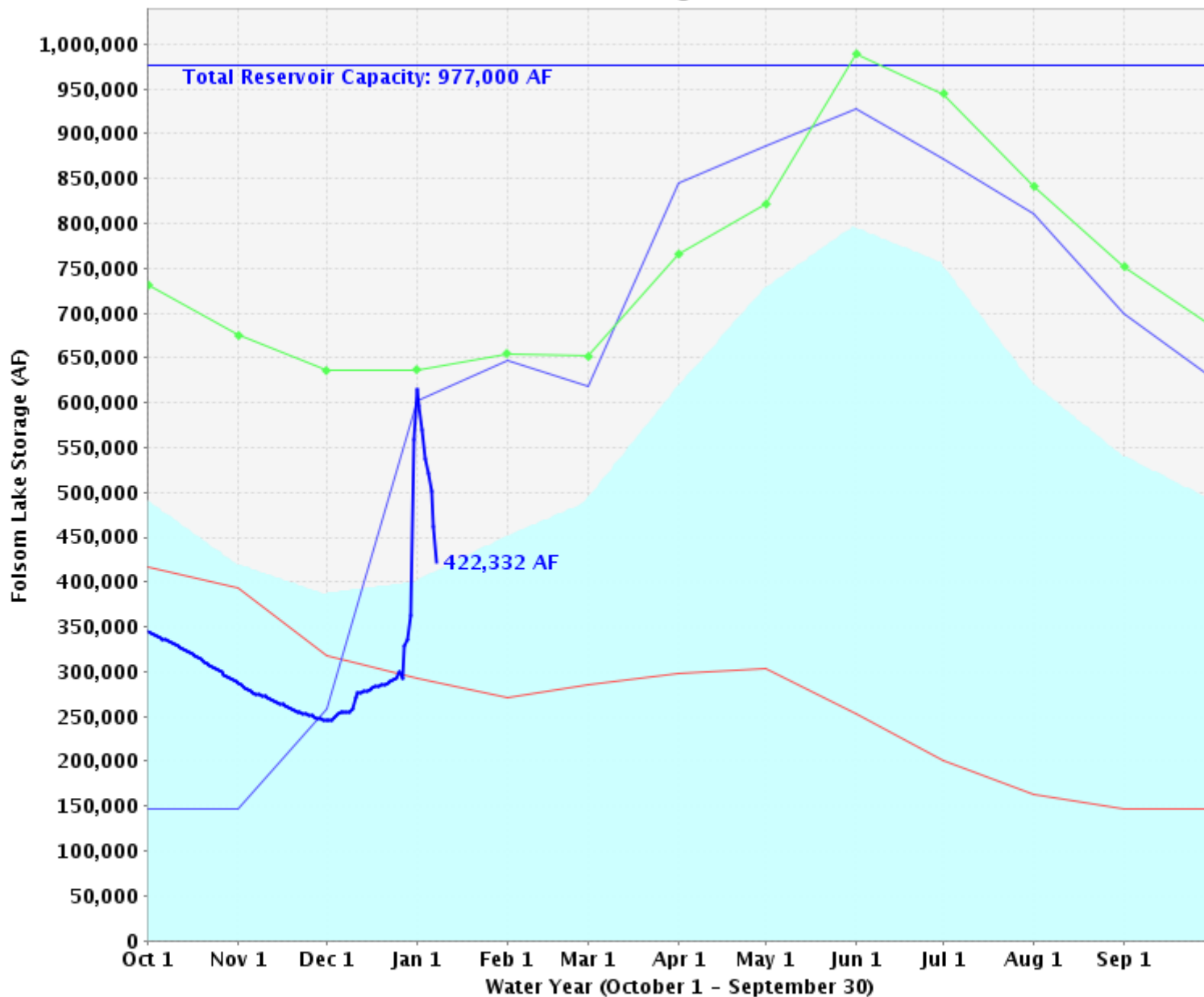
[Click for printable version of current data.](#)

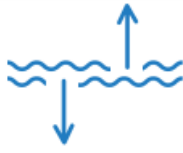
Report Generated: 09-Jan-2023 4:45 PM

The CSI link has been disabled to zoom in, for the lack of historical data.

(ctrl+click for multiple selections)

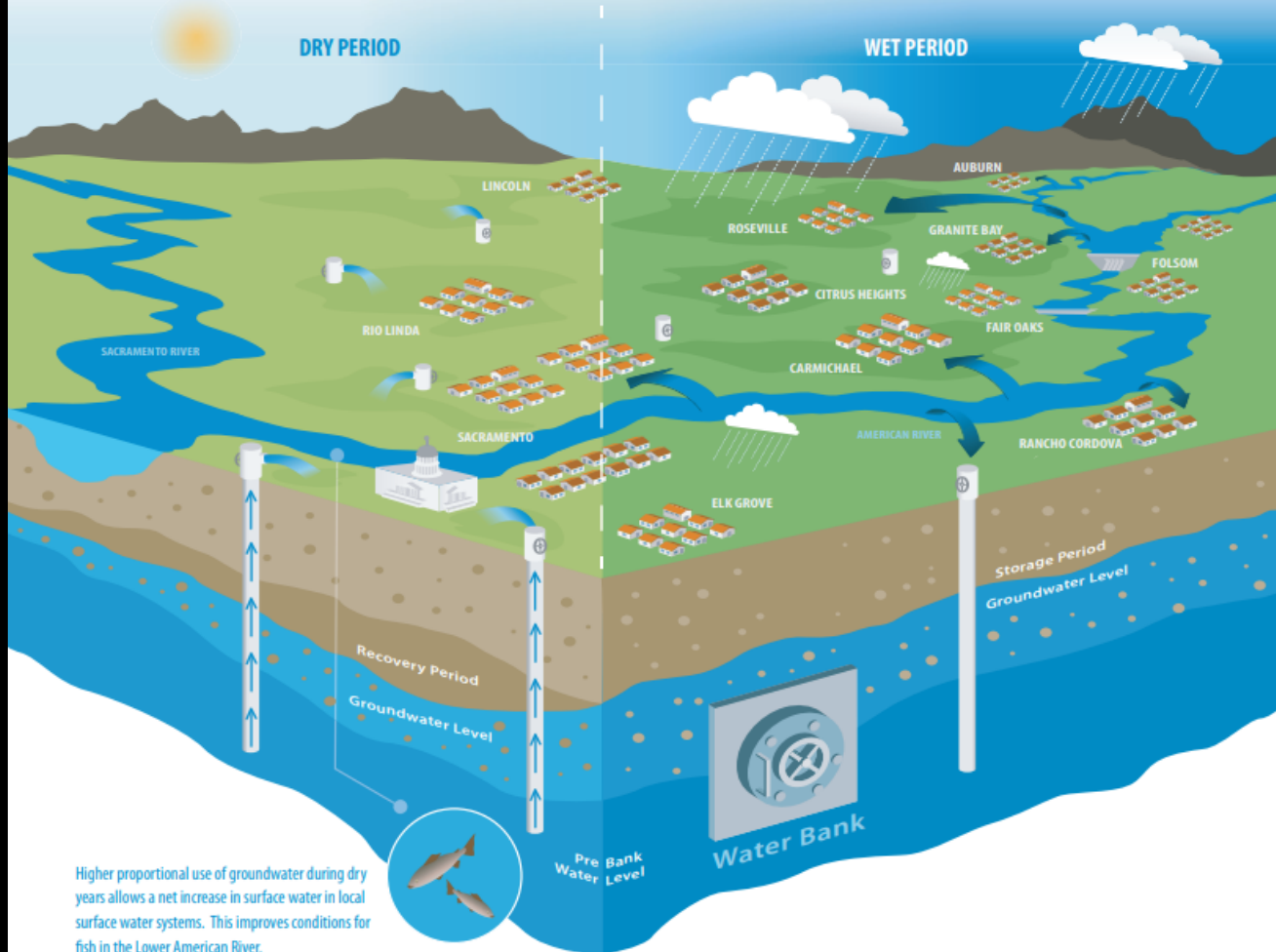
Folsom Lake Storage Levels





How the Water Bank Works

The Water Bank will operate by coordinating the use of surface water and groundwater. When surface water supplies are plentiful, water providers in the region will draw more water from Folsom Lake or local rivers and use it to offset existing demand for groundwater. This effectively increases groundwater in **storage**, resulting in a deposit in the Water Bank. During dry years, **recovery** of stored groundwater will occur through additional pumping, resulting in a withdrawal from the Water Bank. The Water Bank will be managed consistent with local groundwater sustainability plans.



Higher proportional use of groundwater during dry years allows a net increase in surface water in local surface water systems. This improves conditions for fish in the Lower American River.

Storage and Recovery Potential

An acre-foot is equal to about 326,000 gallons, or enough to serve nearly three local families for a year.

2023 Drought and Conservation Technical Reporting Order

From: lyris@swrcb18.waterboards.ca.gov <lyris@swrcb18.waterboards.ca.gov>
Sent: Monday, January 9, 2023 3:28 PM
To: Amy Talbot <atalbot@rwah2o.org>
Subject: Notification of temporary overlapping data reporting requirements for urban retail water suppliers



This is a message from the State Water Resources Control Board.

Good afternoon,

You may have already received an email from the State Water Board's Division of Drinking Water (DDW) regarding the 2023 Drought and Conservation Technical Reporting Order. All water systems, including those operated by Urban Water Suppliers, must report information on sources, supply and demand, and supply augmentation/demand reduction actions.

State Water Board staff are aware that some duplicative reporting is required for urban water suppliers; this is temporary. We are hoping to retire the DRINC Portal and utilize the SAFER Clearinghouse as the platform for fulfilling monthly conservation reporting requirements as soon as possible. For the time being, urban retail water suppliers must still provide their monthly conservation and production reports via the DRINC Portal. We are working to expeditiously facilitate the transition and will continue to provide updates via this Lyris listserv.

The text of the January 4th email from DDW is included below this message.

Please direct any questions to Monthly-Conservation@waterboards.ca.gov.

<https://www.waterboards.ca.gov/drought/resources-for-drinking-water-systems/docs/2023-drought-technical-order-ddw-hq-drought2023-001.pdf>

BE WATER SMART

2023 RWEFAC Meetings

Date
January 10, 2023
March 14, 2023
May 9, 2023
July 12, 2023 @ UC Davis SMARTLandscape
September 12, 2023
November 9, 2023
December 5, 2023 – Holiday Social

Volunteers for locations????

Thank you, Greg and UC Davis!

Holiday Social: @ The Old Spaghetti Factory, Rancho Cordova, 11:30 am – 2:00 pm. All water efficiency staff are invited.





Announcements & Events