

Thank you, SJWD!



RWEPAC

May 14, 2024

WELCOME

Introductions

- Name
- Organization
- What kind of fish or sea animal would you be and why?



Step 1: Click on your favorite fish:

Choose wisely. Only a few will survive!



Utilifish

Skokomish River / Hood Canal

Tacoma Public Utilities

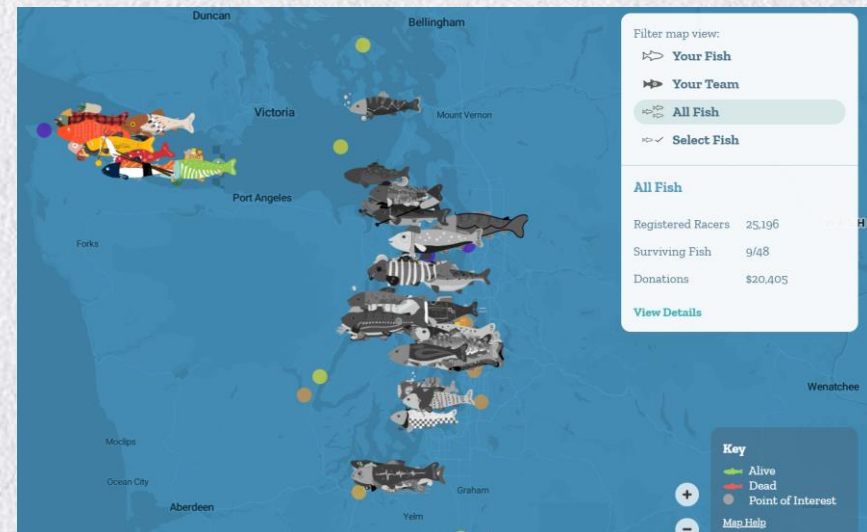


Brian Mackerel

Skokomish River / Hood Canal

FOX 13

<https://survivethesound.org/home>



BE WATER SMART

Agenda

- March 2024 Meeting Notes
- Local Host Presentation - SJWD
- Annual WEP Budget Discussion
- Break
- CII Programs/Conservation Regulation Workshop
- Agency Announcements/Adjournment
- Lunch @ 12:30 pm





Take the CII
Program
Survey!

BE WATER SMART

Meeting Notes

- March 2024
- Approve and post online?





Welcome To

SAN JUAN WATER DISTRICT

Welcome to the Administration Building at San Juan Water District

RESTROOMS

Go out the door, down the hall to the left. Restrooms are on the right hand side at the end of the hall.

WATER

There is a drinking fountain down the hall by the restrooms, or a sink in the breakroom 1st left out the door

WIFI

SSID= SJWDWiFiGuest
Password: WelcomeToSJWD

INTRODUCTION

San Juan Water District is a community services district. San Juan's roots date back to the Gold Rush era with the formation in 1854 of the original entity, North Fork American River and Mining Company, later known as the North Fork Ditch Company

- Provides potable water supplies to approximately 150,000 residents in our retail and wholesale areas
- Treatment and delivery of more than 40,000 acre-feet of water per year through approximately 218 miles of pipeline to wholesale and retail customers



Meet the SJWD Team

Customer Service and Water Efficiency



Customer Service Team

Devon Barrett

Customer Service/ Water Efficiency
Manager

8 years with SJWD

Robert Brown

Customer Service Representative

5 years with SJWD



Elishia Sorensen-Pelle

Customer Service Representative

9 years with SJWD

Megan Anderson

Customer Service Representative

1.5 Years with SJWD



Water Efficiency Team Members

Ken Kirkland-
Water Efficiency Lead
21 years with SJWD



Jared Clark-
Water Efficiency
Technician II
2 years with SJWD



Danielle Pastore-
Water Efficiency
Technician
1.5 years with SJWD





Water Efficiency Programs

In-Track Leak Detection

- Onsite leak detection for customers notified of higher than average use.
- Customers can request an appointment with the Water Efficiency Team if they suspect a leak on the property.

Rebate Programs

- NEW Turf Rebate
- Smart Irrigation Timers
- HET toilets
- Clothes Washers
- Hot Water Demand

Residential Landscape Irrigation Reviews

- Complementary Service for all retail customers.
- Offered year round, but encouraged in early spring.
- Offered in conjunction with our high use courtesy calls.


SJWD Distribution System Leak Detection

- Satellite scans by Asterra for leak detection points of interest in the district.
- Leak detection performed by Water Efficiency Staff
- Last Year had over 40 leaks found and repaired.

High Usage Courtesy Calls

- All accounts reviewed based on 3 year average for current billing cycle.
- Additional meter read and meter check for leak.
- Notify customer with helpful information and offer leak detection when needed.

WEL Garden

- Demonstration garden for water efficient landscapes from different regions.
 - Open to the public and used for workshops.
 - Community garden beds for the employees at SJWD to enjoy produce throughout the year.
- 

2024-2025 Budget Overview

- **3% dues increase**
 - **\$154-\$1,217 per agency – see PDF for details**
- RWA Budget Salary Share
 - Previous Policy: 10% of staff/office costs covered by RWA budget each year
 - FY17 - \$13,600 (10%)
 - FY18 - \$31,500 (20%)
 - FY19 - \$50,200 (30%)
 - FY20 - \$74,000 (40%)
 - FY21 - \$82,000 (40% plus increase in costs)
 - FY22 - \$0 (0%)
 - New policy: 20% of staff/office costs covered by RWA budget each year
 - FY23 - \$56,000 (20%)
 - FY24 - \$95,000 (30%)
 - FY25 - \$68,000 (20%)

Reserves

- Current reserves - \$450,000
 - How did we get here? Grant funding/staff time
- Previous policy of 4- 6 months
 - \$186,000 - \$280,000
- Reserve Policy Approved by WEP and RWA Board
 - \$150,000 for grant floating
 - \$100,000 for program
 - \$50,000 for drought/redesign
- Designated \$150,000 to 606/1668 implementation
 - November 8, 2023 meeting
- Using 100% of reserves for grants FY24-26

Grant Administration Revenue

- FY 24 (July 1, 2023-June 30, 2024)
 - DWR Phase 2 Direct Install/Turf/Public Outreach - \$25,000
 - Phase 1 Direct Install - \$15,000
 - TOTAL: \$40,000
- **FY 25 (July 1, 2024-June 30, 2025)**
 - **DWR Phase 2 Direct Install/Turf/Public Outreach - \$45,000**
 - **SRCSD Admin - \$4,000**
 - **TOTAL: \$49,000**
- FY 26 (July 1, 2025-June 30, 2026)
 - DWR Phase 2 Direct Install/Turf/Public Outreach - \$45,000
- FY 27 NEED MORE GRANTS

2024-2025 Budget Overview

FY 2024

FY 2025

Table 1. Category 1 Budget Summary

Program Revenues FY 2023-2024	
Projected FY 2023-2024 Category 1 Revenues ¹	\$462,000
RWA Salary/Office Share (30%)	\$96,000
FY 2022-2023 Reserve Funding	\$53,000
FY 2023-2024 Grant Administration Revenue	\$40,000
Total Revenues	\$651,000
Program Expenses FY 2023-2024	
Program Management and Implementation, Technical Assistance	
Staff, Legal, Office Expenses, Travel, Financial and Audit Services	\$344,000
Water Efficiency Consulting Services	\$50,000
Best Management Practices (BMP) Implementation Categories ²	
Public Outreach	\$215,000
School Education	\$20,000
Landscape	\$22,000
Total Expenses	\$651,000

Table 1. Category 1 Budget Summary

Program Revenues FY 2024-2025	
Projected FY 2023-2024 Category 1 Revenues ¹	\$475,000
RWA Salary/Office Share (20%)	\$68,000
FY 2023-2024 Reserve/Carry Over Funding	\$92,000
FY 2024-2025 Grant Administration Revenue	\$49,000
Total Revenues	\$684,000
Program Expenses FY 2024-2025	
Program Management and Implementation, Technical Assistance	
Staff, Legal, Office Expenses, Travel, Financial and Audit Services	\$369,000
Water Efficiency Consulting Services	\$50,000
Best Management Practices (BMP) Implementation Categories ²	
Public Outreach	\$224,000
School Education	\$14,000
Landscape	\$27,000
Total Expenses	\$684,000

2024-2025 Budget Overview

Table 2. BMP Implementation Categories

PUBLIC OUTREACH		\$224,000
Regional Outreach Campaign	Common message and branding	\$199,000
	Media buys and marketing (i.e., TV and Radio ads, PSA's)	
	Events Team and collateral	
	Outreach consultant and additional partnerships	
	Sacramento Republic Partnership	\$25,000
SCHOOL EDUCATION³		\$14,000
Educational Presentations	Partnership for delivery of educational presentations to schools and public venues	\$14,000
LANDSCAPE		\$27,000
Landscape Outreach Activities	Landscape Education Partnerships (Harvest Day, etc.)	\$7,000
	Gardensoft Gallery renewal for BeWaterSmart.info website	\$5,000
	Professional Trainings (QWEL/ReScape CA, etc.)	\$15,000
TOTAL		\$265,000

BE WATER SMART

Budget Over Time

	FY 18	FY 19	FY 20	FY 21	FY 22	FY23	FY24	FY25
Public Outreach	\$179,000	\$180,000	\$200,000	\$200,000	\$200,000	\$215,000	\$215,000	\$224,000
School Education	\$20,000	\$20,000	\$20,000	\$20,000	\$20,000	\$20,000	\$20,000	\$14,000
Landscape	\$20,000	\$23,000	\$25,000	\$22,000	\$22,000	\$22,000	\$22,000	\$27,000
Reserve Funding	\$40,000	\$40,000	\$40,000	\$40,000	\$111,000	*\$9,000	\$53,000	\$92,000
Total Budget	\$525,000	\$543,000	\$567,000	\$570,000	\$559,000	\$588,000	\$651,000	\$684,000
Grant	Yes	Yes	Yes	Yes	Yes	Yes	Yes	Yes
Carryover	Yes	Yes	Yes	Yes	Yes	Yes	Yes	Yes
Salary Share	20%	30%	40%	40%	0%	20%	30%	20%
WEP Dues Increase	5%	0%	0%	0%	0%	0%	3%	3%
RWA Dues Increase	10%	4%	5%	5%	0%	3.7%	0%	5%

*BEF funding offset reserve need.

Current Grant Funding

- Regional San - \$350,000 per year
- Direct Install - \$2.6 M for next 2 years
- Turf Replacement - \$500,000
- Public Outreach - \$338,000 for next 2 years
- Ongoing DWR Rebate Grants – contact Monica
- Creative Corp Grant - \$300,000
 - School education, theatre/efficiency mix, child focus groups, 400 classrooms, DAC, Sac County focus
 - Expand to Placer, El Dorado and Yolo in summer/fall

BE WATER SMART

Next Step

- Budget discussion/seeking approval





TAKE A BREAK



CII Programs/Conservation Regulation Workshop

BE WATER SMART

Agenda

- CII Regulation Requirements Overview
- Peer to Peer CII Programs Sharing
 - Nicki, MWM
 - William, City of Sacramento
- Small Table Discussion
- Report Back/Wrap Up



BE WATER SMART

Workshop Team Introductions

- Joanna Solins, UCANR
- Nicki Powell and Lisa Maddaus, Maddaus Water Management




BeWaterSmart.info

CII Performance Measures



CII Performance Measures

Action	Compliance Date	Ongoing Activities
Identify buildings that meet “disclosable buildings” threshold according to CEC and supply building owners information by request.	June 2024 or regulation effective date	
Classification of CII properties with ENERGY STAR ++++	June 30, 2027	Maintain 95%, assessed annually
Ban non-functional turf with potable water for all CII landscapes	January 1, 2027	

PUBLIC DISCLOSURE DASHBOARD



View, search, and download energy performance information for commercial and multifamily buildings.

[PUBLIC DISCLOSURE DASHBOARD >](#)

[DASHBOARD DEMONSTRATION VIDEO - YOUTUBE >](#)

ENERGY STAR®
PortfolioManager®

- Download submitted 2022 benchmarking information

Classification Categories

1. Banking/Financial Service
2. Education
3. Entertainment/Public Assembly
4. Food Sales and Service
5. Healthcare
6. Lodging
7. Manufacturing/Industrial
8. Mixed Use Properties
9. Offices
10. Parking
11. Public Services
12. Religious Worship
13. Retail
14. Technology/Science
15. Services
16. Utility
17. Warehouse/Storage
18. Other
19. CII Laundries
20. Landscapes with DIM
21. Water recreation
22. Car wash

CII Best Management Practices Options

Action	Compliance Date	Ongoing Activities
<p>BMP Choose Your Own Adventure PART I Track 1: ID top 2.5% CII Users & Top 20% CII Users Track 2: ID top 2.5% CII Users & Top 20% CII Users in each classification category Track 3: ID CII Users based on Supplier Defined Thresholds</p>	<p>Track 1: 06/2025 Track 2: 06/2027 Track 3: 06/2029</p>	<p>Maintain 95%, assessed on annual basis</p>
<p>BMP Choose Your Own Adventure PART II Track 1 and 2: Top 2.5% CII Users design implement 2 BMPs from each category Track 1 and 2: Top 20% CII Users design and implement 1 BMP from each category Track 3: Design and implement 1 BMP from each category</p>	<p>All Tracks: June 30, 2039</p>	<p>Maintain programs</p>

The 5 CII BMPs Categories

1. Outreach, Technical Assistance, and Education BMP

Examples: workshops, advertisements, phone calls/visits

2. Incentive BMP

Examples: rebates/cost-sharing for fixtures, certification programs

3. Landscape Programs BMP

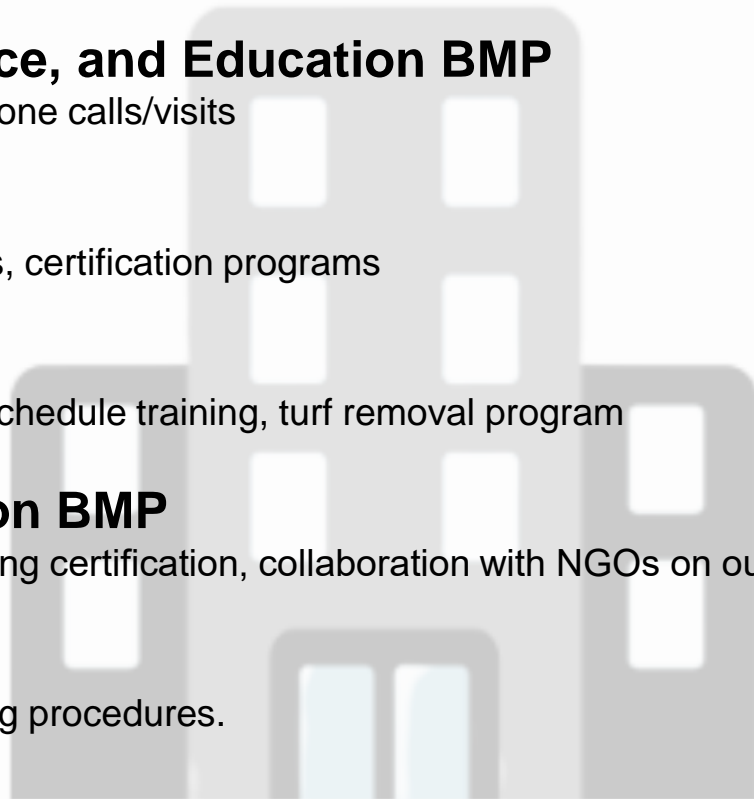
Examples: irrigation check ups, irrigation schedule training, turf removal program

4. Collaboration and Coordination BMP

Examples: Coordination with “green” building certification, collaboration with NGOs on outreach

5. Operational BMP

Examples: Smart meter replacement, billing procedures.



DIM Installation or In-Lieu Technologies

Action	Compliance Date	Ongoing Activities
DIM installation or in-lieu technology plus 2 BMPs on large landscapes <i>(threshold = ½ acre landscape)</i>	June 30, 2039	Maintain 95%, assessed on annual basis

In-Lieu technologies include at least one of the following:

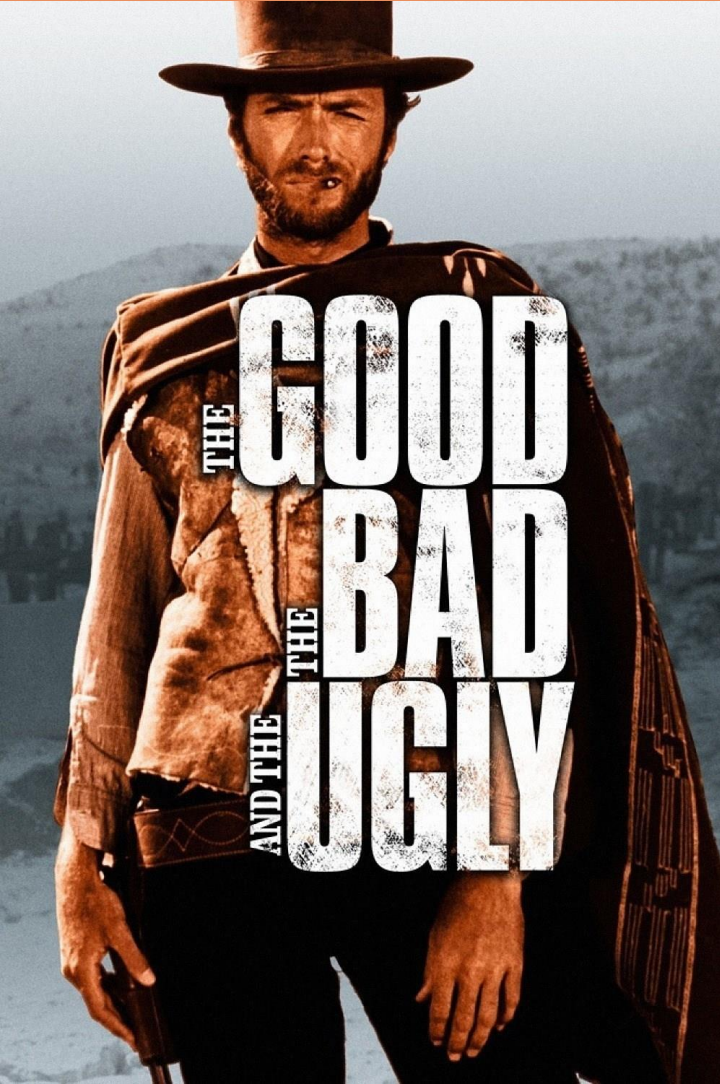
1. Water budget-based rate structure
2. Water budget-based management program without a rate restructure
3. Installation of technologies that enable the supplier to identify, estimate, and analyze outdoor water use (may include AMI)
4. Use of technologies that enable the supplier to identify, estimate, and analyze outdoor water use (may include remote sensing)
5. Other in-lieu technologies that enable the supplier to identify, estimate, and analyze outdoor water use (may include remote sensing)

BE WATER SMART

Nicki Slides



BeWaterSmart.info



Commercial, Industrial and Institutional Water Conservation Programs



City of
SACRAMENTO
Department of Utilities

ICE MACHINES

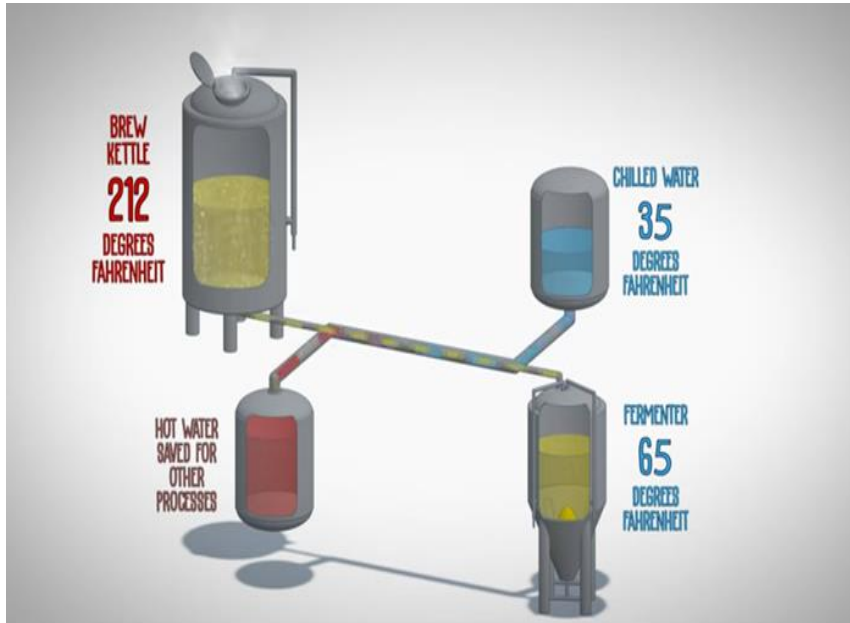
AIR-COOLED
VS WATER-COOLED



CEI Rebate Offerings

- Pre-rinse spray valves - *up to \$75*
- Plumbing flow control valves - *\$2.50 each, 20 min.*
- Air-cooled ice machines - *up to \$300*
- Cooling tower controllers - *up to \$500*
- Connectionless food steamers - *up to \$200 per compartment*
- Dry vacuum pumps - *\$60 per 0.5 HP, up to 2*
- Laminar flow restrictors - *\$5 each, minimum of 10*
- HET and HEU rebates:
 - Gravity flush toilet - *\$150*
 - Flushometer toilets or urinals - *\$250*

CII Customized Incentive Program



- Maximum rebate of \$50,000 at \$.50 per HCF/CCF saved per year, calculated over 10 years
- Similar incentive to those offered by Roseville, EBMUD, MWD of So California

CIU Outdoor Rebates



- Maximum rebate of **\$50,000** at \$1.50 per square foot for landscape retrofit project, including grass conversion and irrigation upgrade with smart controller
- **Labor costs** for licensed landscaping contractor (C-27) may be reimbursed up to 20% of total project's reimbursable amount
- Targeting Non Functional Turf



CII Services

- Leak alerts and investigations for
 - Offices, schools, churches, warehouses, irrigation accounts, cemeteries
- Leak investigations offered since July 1, 2023
- Water Wise Business Calls offered

PREM_TYPE_CD	AMILEAKLETR	AMILEAKLTR-2	Total
ASGLFAM	14109	5200	19309
BOARDHM	3		3
CEM/MORT	13	10	23
CHURCH	78	28	106
COMMON	89	56	145
COMOFFIC	375	231	606
Total	16241	6266	22507

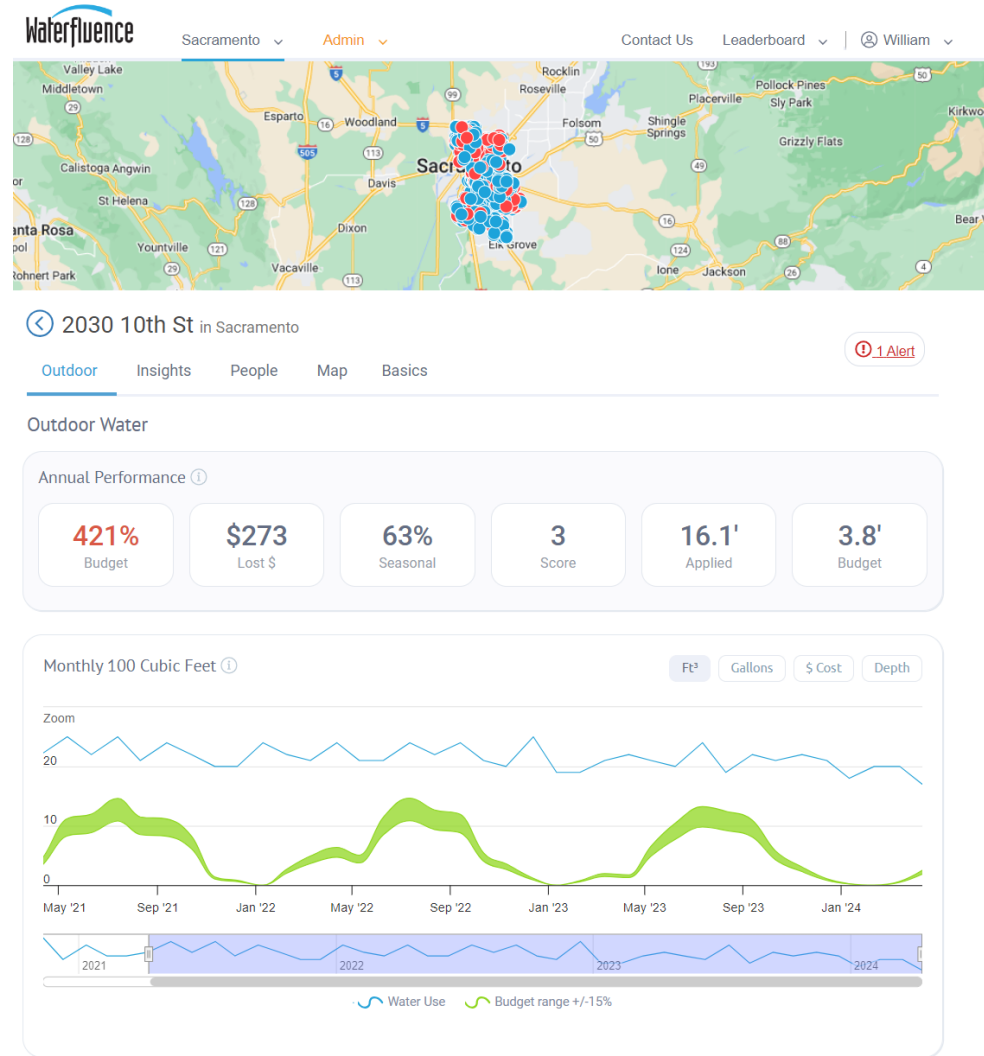
COMOFFIC	375	231	606
COMWAREH	204	117	321
DUPLEX	832	328	1160
FOURPLEX	193	128	321
IRRIG	81	34	115
MEDIAN	16	5	21
Total	16241	6266	22507

PREM_TYPE_CD	AMILEAKLETR	AMILEAKLTR-2	Total
MEDIAN	16	5	21
MULTIRES	3	2	5
PARK	67	35	102
PARKLOT	8	6	14
PRVSCHOL	18	3	21
PUBSCHOL	99	53	152



Waterfluence

Free website that allows most of our irrigation only customers allows to track their water usage vs. a theoretical landscape water budget



Visit:

www.SacWaterWise.com

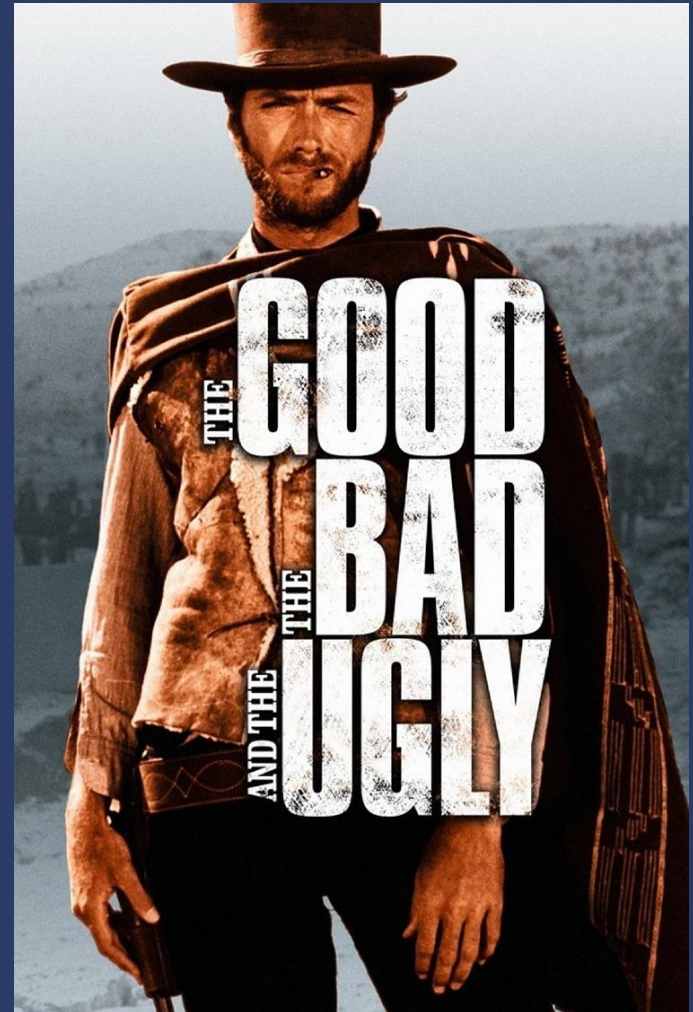
Email:

wgranger@cityofsacramento.org

Call:

916-808-1417

Questions?



BE WATER SMART

Small Table Discussion

- Please split into 3 groups
 - Mix of small, medium and larger suppliers in each group
- Group leaders are Amy, Joanna and Lisa
- Notecards on each tables to write down questions, comments and/or recommendations
- 1-hour for discussion
 - Reminders on time at 30-, 15- and 5-minutes left



Small Table Discussion

1. What did you learn from the presentations that got your thinking about your programs?
2. What methods have you found to be successful/not successful when working with CII customers?
3. What part of the CII performance measure requirements are most concerning to implement? And why?
4. What are you doing for CII right now that would be helpful to level up to RWA or CalWEP?
5. What else can RWA do to help with the requirements?

BE WATER SMART

Report Back/Wrap Up

1. What did you learn from the presentations that got your thinking about your programs?
2. What methods have you found to be successful/not successful when working with CII customers?
3. What part of the CII performance measure requirements are most concerning to implement? And why?
4. What are you doing for CII right now that would be helpful to level up to RWA or CalWEP?
5. What else can RWA do to help with the requirements?



BE WATER SMART

Workshop Evaluation

Please fill out the workshop evaluation form.

This will help us plan future workshops.



BeWaterSmart.info

BE WATER SMART

2024 RWE PAC Meetings

Date
January 9, 2024
March 19, 2024 – SSWD
May 14, 2024 – San Juan Water District
July 9, 2024 – Roseville
September 10, 2024 – West Sac
November 12, 2024 – PCWA
December 6, 2024 – Holiday Social

Holiday Social: @ The Old Spaghetti Factory, Rancho Cordova, 11:30 am – 2:00 pm. All water efficiency staff are invited.





Announcements & Events