

Thank you, West Sacramento!



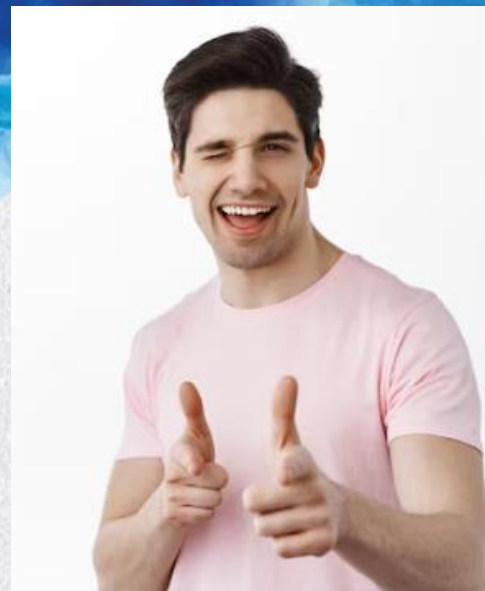
RWEPAC

September 10, 2024

WELCOME

Introductions

- Name
- Organization
- Fun fact about you or the world

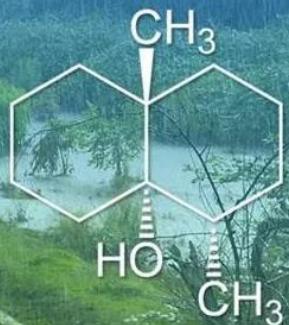


or

200,000 X stronger than shark's ability to smell blood

The smell of rain

“Geosmin has a distinct earthy flavor and aroma, and is responsible for the earthy taste of beets and a contributor to the scent (petrichor) in the air when rain falls after a dry spell of weather. It is produced by a type of Actinobacteria.”



BE WATER SMART

Agenda

- Welcome from Ryan!
- July 2024 Meeting Notes
- 2024-2025 Grant Application Discussion
- Program Updates
- Break/Water Taste Test
- Conservation Regulation Assistance/Next Steps
- Agency Announcements/Adjournment
- Lunch @ 12:30 pm



BE WATER SMART

Meeting Notes

- July 2024
- Approve and post online?



2024-2025 Grant Application Discussion

- No DWR funding for the foreseeable future
- Checking with private funders/foundations
- USBR WaterSmart Grant is our best option
 - Due November 13, 2024
 - Awards in May 2025, funding available in October 2025
 - Landscape incentives (turf, controllers, nozzles)
 - Indoor direct install and rebates
 - Focus on DACs
 - No water loss ☹️
 - 2-year timeline
 - Up to \$5M per award
 - 50% Match



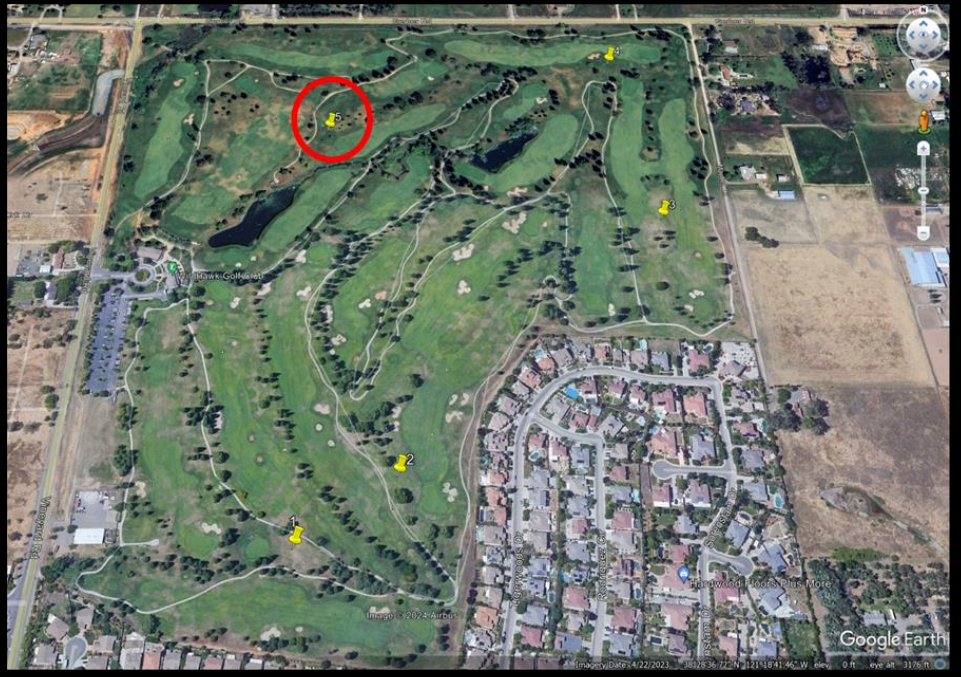
2024-2025 Grant Application Discussion

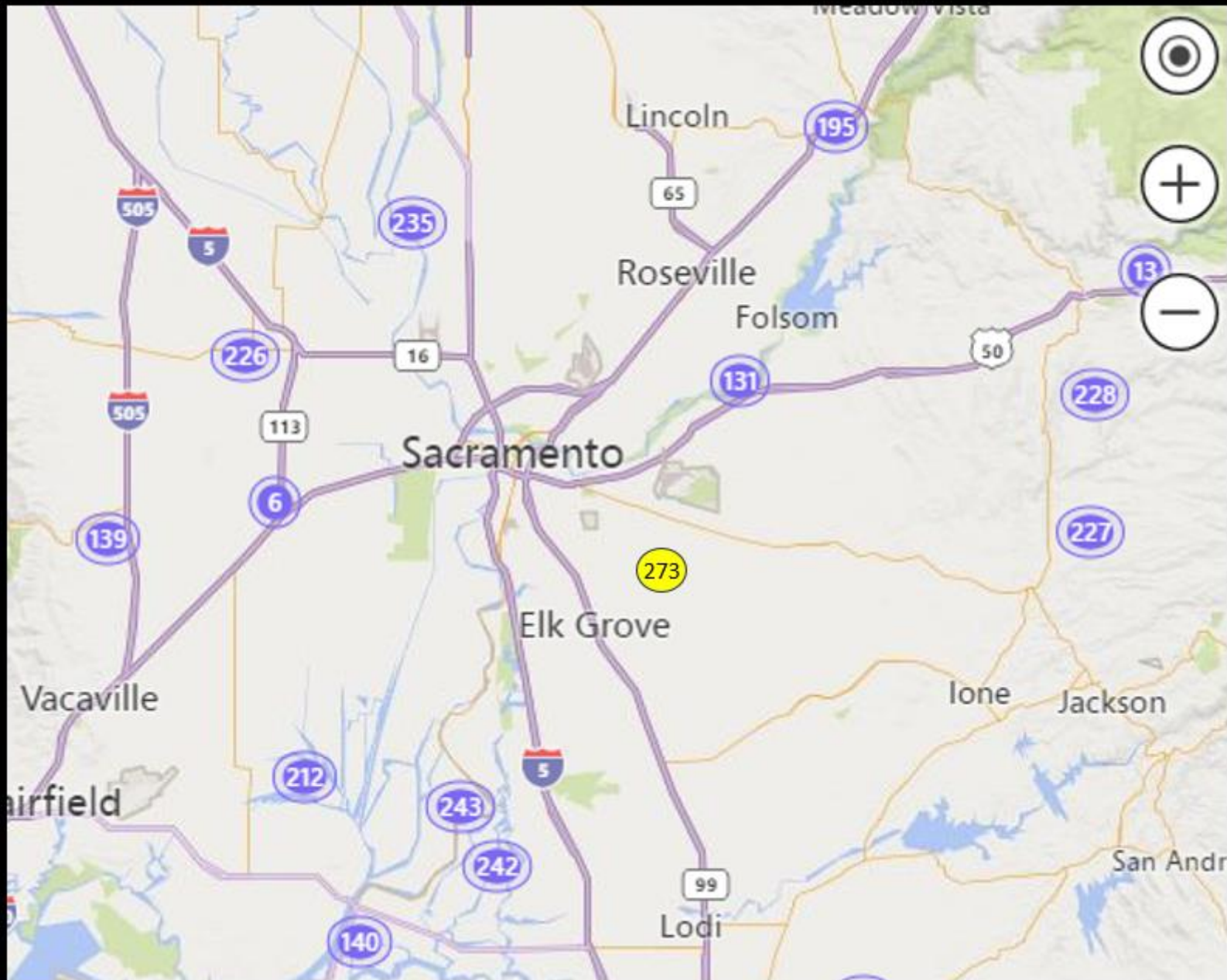
- Application recommendation - \$4 M
 - Turf and irrigation efficiency rebates \$1.5 M
 - Indoor Direct installation 80% DAC focus \$1.3 M
 - CII Indoor Rebates \$600,000
 - School education/public outreach \$600,000
- Need \$2 M match for funding
 - RWA DWR direct installation funding to cover 100% of match
- Focus for Monica/Amy next few months.
- May reach out for help.

Program Updates

Program Updates – New CIMIS Station

- WildHawk Golf Club
- Located in Elk Grove, SCWA customer
- Agreement in progress, final - end of September?
- SCWA to help with station maintenance
- Cost \$15,000 for equipment
- Help with spatial CIMIS for conservation regulation
- Hotter drier climate to balance Fair Oaks riparian climate
- Data should be incorporated immediately from DWR
- 2 years from start to finish
- More stations?





Program Updates – QWEL

- New Admin fee structure
 - From \$1,000 per year to \$3,500 a year
 - Increases with more QWEL Pros
 - \$20 per Pro each year
 - Limit to 1 class per year, 30 students per class
 - \$50 per new student
- Inquiries about Spanish class (Monica)
 - Secured teachers
 - Ad hoc committee to help with outreach?
 - Class minimum for students
- Next QWEL training this fall (Monica)

BE WATER SMART

Program Updates – CLIA

- Hosted CLIA training in April 2024
- Follow up review and exam
 - January 24, 2025
 - Review am
 - Exam 1-5 pm
 - Don Franklin as reviewer and proctor
 - SSWD Antelope facility – thank you, Greg!



BE WATER SMART

Program Updates – Brewery Partnership

- Still chugging along...
- But now we have Max McSlavkin for targeted support
- 25 new breweries in 2025!
- Off to a great start
 - Max reaching out in Sacramento and Auburn Area
 - Networking happy hour in October at Jack Rabbit
 - Two presentations at CalWEP and WSI on partnership



BeWaterSmart.info

BE WATER SMART

Program Updates – Nippon Shokken

- Debbie Arrington interviewed staff
- Developed case study article
- 53 M gallons in savings over 20 years
- Next steps:
 - Pitch story to SOW, similar video to Urban Roots
 - RWA video
 - Social media posts to promote
 - Pitch story to business reporters
- Other stories out there?



BeWaterSmart.info

BE WATER SMART

Program Updates – Kikkoman

- Thank you, Folsom!
- Plant Tour – best day?
 - **M, October 14th**
 - **W, October 16th**
 - **M, October 21st**
 - **W, October 23rd**
- 1.5 hrs
- Video and tour
- Must wear PPE



BE WATER SMART

Program Updates – STF Buckets

- So....funny story
- Request for 2,5000 buckets total
- STF funding – \$2,500
- \$5-\$8 per bucket
- Options:
 - Drop it
 - Request remaining 100 from STF?
 - Use \$2,500 in funding?
 - Use \$2,500 toward larger order with RWA/supplier funding?



Agency
SSWD
RWA
SJWD
Roseville
Carmichael WD
PCWA
Sacramento

BE WATER SMART

Conservation Regulation and Nurseries

Joanna Solins, Ph.D.

UC Cooperative Extension

- Nursery conference presentation
 - How will the conservation regulation impact plant/tree demand for growers
 - Any insight from a water supplier perspective?



BeWaterSmart.info

BE WATER SMART

Program Updates – Mulch Mayhem Check In

- Still interested in Mulch Mayhem event for next spring?
- Thoughts?
- Concerns?



BeWaterSmart.info

Program Updates – General

- WSI Attendance – show of hands?
- Any advice about municipal vehicle wash bays?
 - Recycle water requirements
- Flume/DWR Indoor Study participation
 - Carmichael Water District
 - City of Lincoln
 - Anyone else interested?
- School education program expansion meeting
- SoCalGas/Green Gardeners Group webinar - Karen

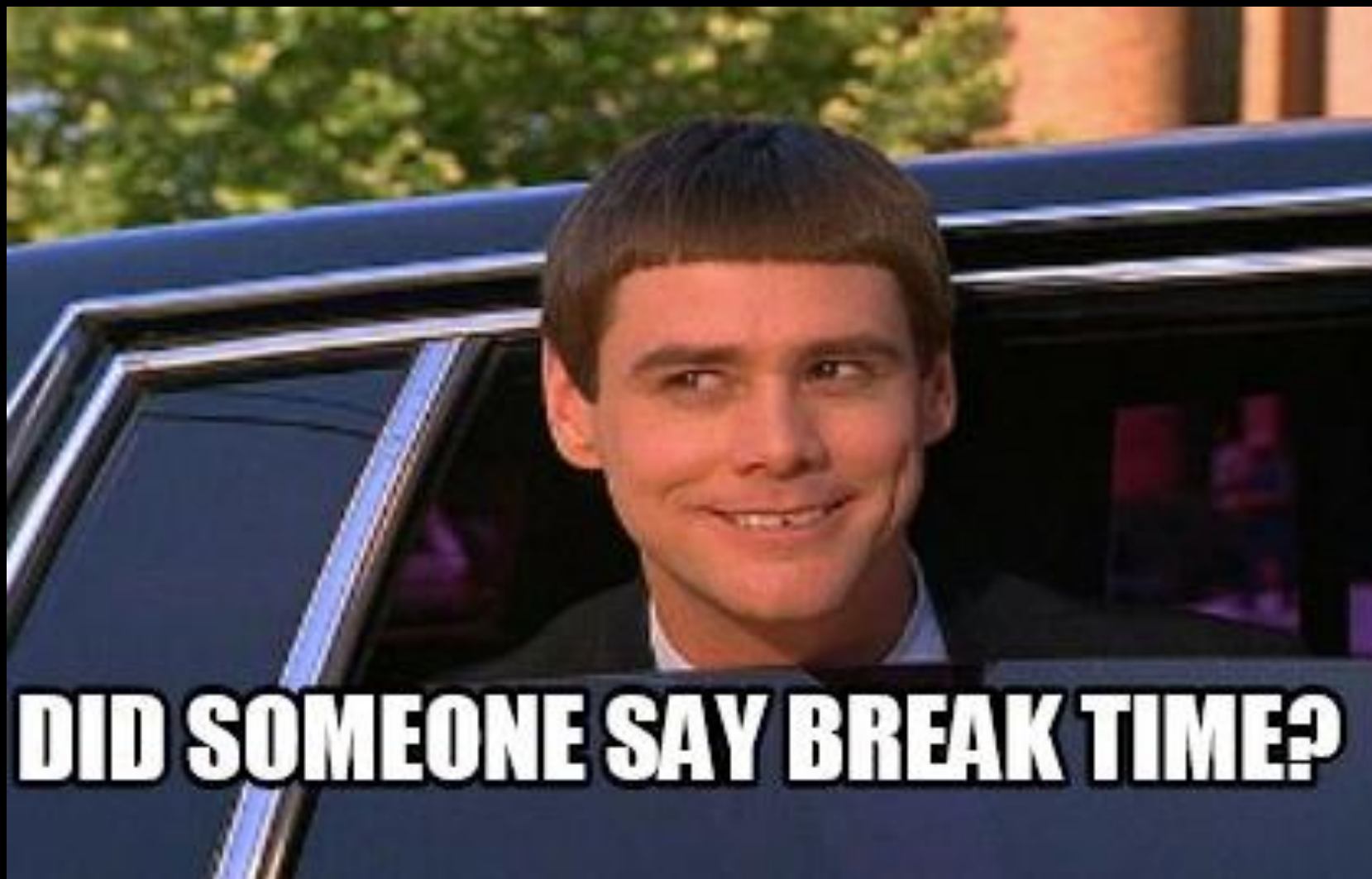
BE WATER SMART

Water Taste Test

- Grab a sample cup
- Pour a little from each entry container
- Vote with the leaky bucks – 5 per person
- All in one or divide them out
- Results during lunch!

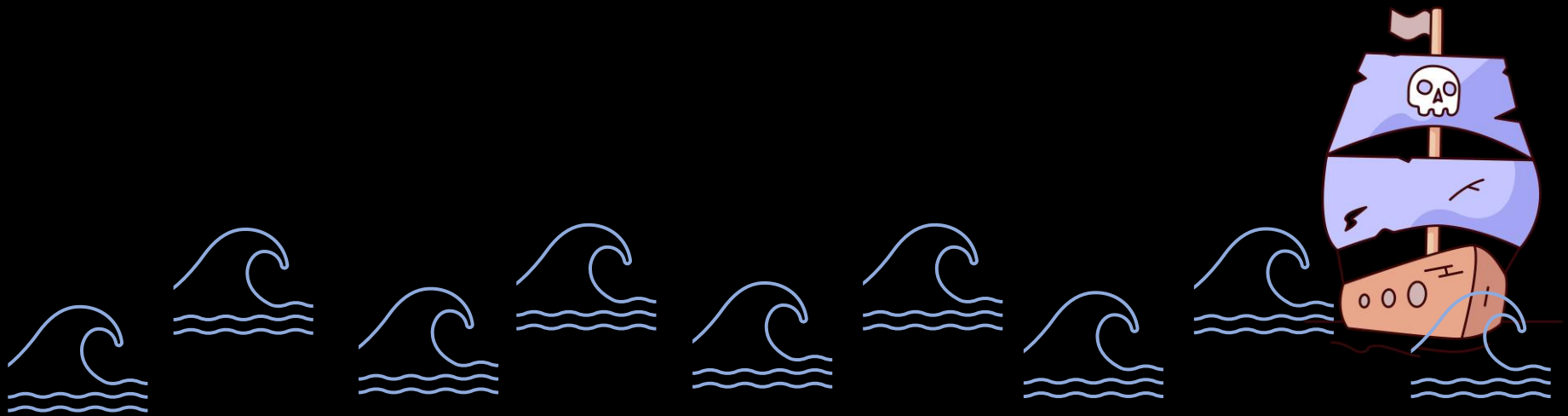


BeWaterSmart.info



DID SOMEONE SAY BREAK TIME?

Conservation Regulation



Conservation Regulation Assistance

- **Effective date and reporting January 1, 2025**
- **CalWEP Resources**
 - CII DIM Guide – in progress
 - CII Classification Guide – in progress
 - RFP Consultant Support Guide – in progress
 - NAICS to EPM Crosswalk
 - Priority Matrix – in progress
 - CalWEP Viewer/Eagle Aerial - in progress
- **RWA Activities**
 - NFT definition committee
 - Customer videos 1) What is the CR? 2) What is NFT?
 - Grant funding for rebates/programs
 - CII Regional Program/committee
 - Budget spreadsheet

CaWEP Implementation Center

Resources, guides, information, and a marketplace that serves both our members and the wider community with specific detail on how to implement strategic changes and continue to keep all your systems current.

SEARCH THE CENTER

Or browse by popular topics.....

[see all topics >>](#)

[Implementation Guides](#)

[Landscape Conversion Criteria Matrix](#)

[Lessons Learned: DIM Management for CII Accounts](#)

[General Cutsheets](#)

[Framework 101 Slide Deck](#)

[CII DIM Guide](#)

[CII Classification Guide](#)

[RFP Consultant Support Guidance](#)

What would you like to do?

I want to better understand the regulation and the data requirements



EXPLORE RESOURCES AND VIEW YOUR DATA



I want to hire a consultant



RFP GUIDANCE AND QUALIFIED VENDORS



I need to comply with the CII standard and performance measures



SEARCH CII TOOLS AND GUIDEBOOKS



I want to launch new water saving programs



IMPLEMENTATION GUIDES



I want to.....



LANDSCAPE RELATED SOMETHING?



I need help on the various adjustments in the regulation



VARIANCES AND ALTERNATIVE COMPLIANCE



Regarding reporting.... What does the regulation do?

- Establishes that the State Water Board will provide a **machine-readable form**
- Identifies:
 - **What** shall be reported (e.g., residential population)
 - **Which** data shall be used (e.g., res-pop in SDWIS)

Regarding streamlining... what are we doing?

- Eliminating redundant data submissions by facilitating the integration of data from multiple sources and multiple reporting systems
- Making appropriate data available to the public according to the principles and requirements of the Open and Transparent Water Data Act
- Simplifying reporting by enabling the reporting form to be pre-filled with required data that have already been reported elsewhere.

Open Access to Data

<https://data.ca.gov/dataset/urban-water-use-objectives-conservation>

- Posting relevant data for calculating urban water use objectives. To date:
 - PWSID-DWR ID Crosswalk
 - Residential landscape area
 - Real water loss standards
 - Residential Population

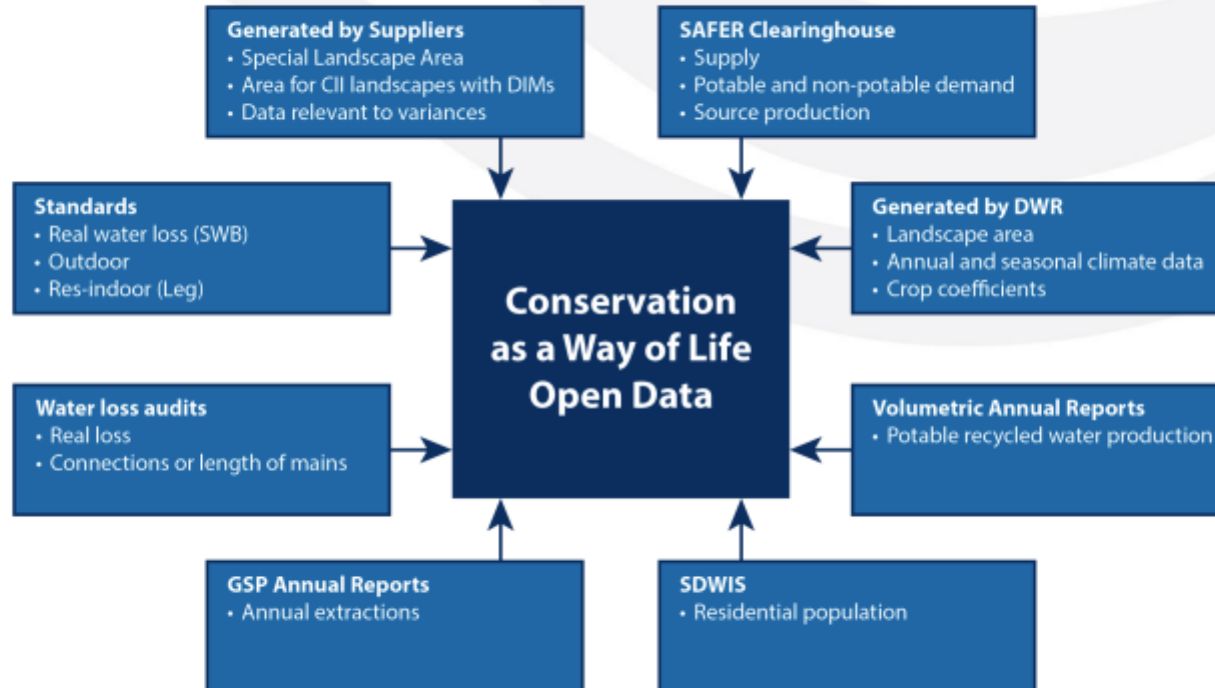
QR Code for Open
Data Portal dataset



The screenshot shows the California Open Data Portal interface. At the top, there is a navigation bar with 'CALIFORNIA OPEN DATA PORTAL' and links for 'DATASETS', 'ORGANIZATIONS', and 'TOPICS'. Below this, the breadcrumb trail reads: 'Organizations / California State Water... / Urban Water Use Objectives - Relevant Data'. The main content area is divided into two columns. The left column features a header 'Urban Water Use Objectives - Relevant Data' with a 'Followers' count of 1 and an 'Organization' section for the 'California State Water Resources Control Board', including its logo and website URL. The right column displays the dataset title 'Urban Water Use Objectives - Relevant Data' and a descriptive paragraph about the Making Conservation a California Way of Life regulation. Below this, a 'Data and Resources' section lists three datasets: 'PWSID-DWRID Crosswalk', 'DWR - Landscape Area Measurement Final', and 'Residential Population from SDWIS', each with a brief description.

California Water Boards

Data streamlining vision



QR Code for Open Data Portal dataset



Correcting old data in Open Data Tables

- Corrections to data posted on Open Data must be done in **source datasets** (Clearinghouse, SDWIS, water loss audits, etc.)
 - Most production and deliveries data (potable and non-potable) can be directly edited in the Clearinghouse
 - Data changes for other datasets may require reaching out to the appropriate team at the Board or Department
 - Open Data Tables will be periodically updated until **mid-December**
 - **Don't wait until the last minute – changes may take time**

QR Code for Open
Data Portal dataset

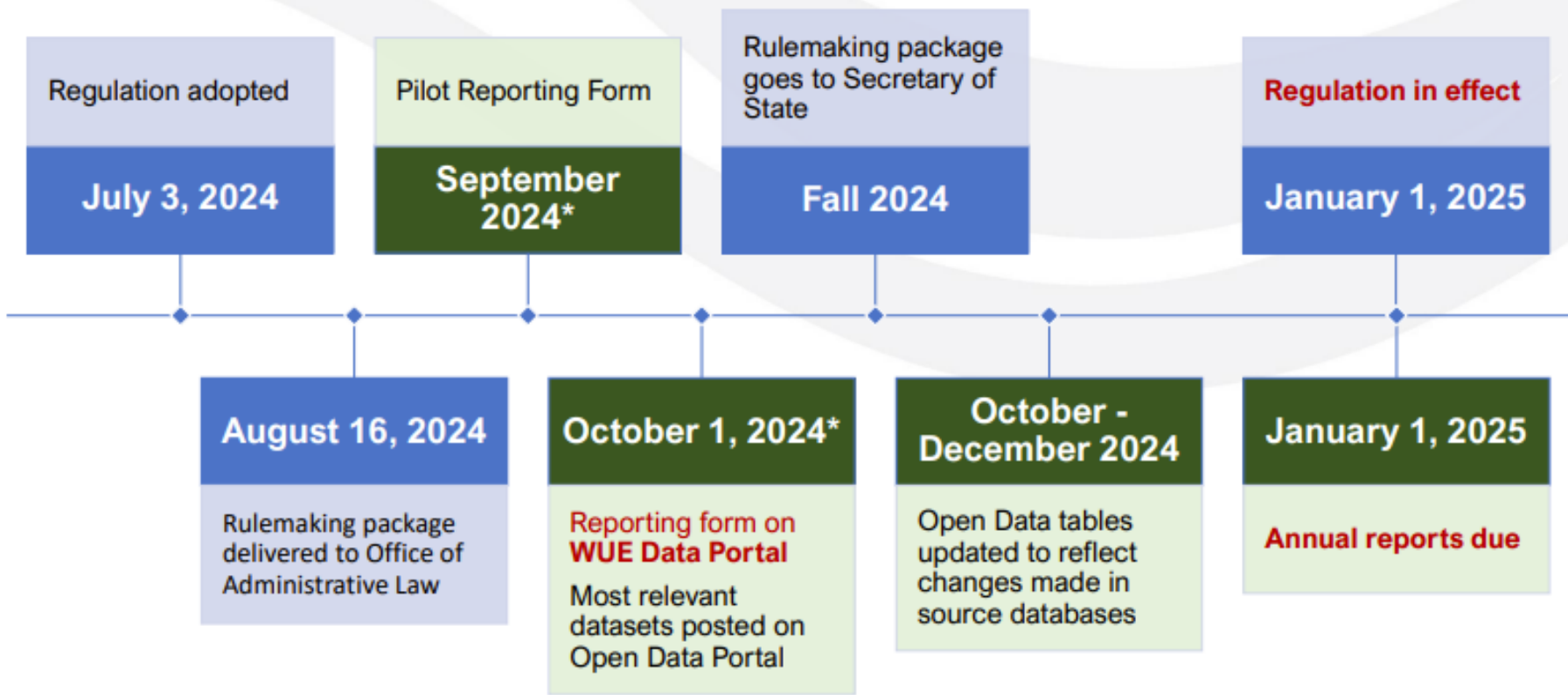


Reporting form data input categories

Cell Color	Type of Data Input Field	Examples
Blue	Parameter defined in statute or regulation	Res-Indoor standard, Res-Outdoor standard
Yellow	Pre-filled value based on aggregated data corresponding to supplier ORG ID and/or PWSID(s)	Residential population, production and deliveries, landscape area
Green	Supplier-provided values specific to regulation (fill-in)	SLA square footage, number of CII classified accounts, variance information
Orange	Supplier-provided values specific to regulation (drop-down selection)	Yes/No responses to offering CII BMPs, specifying variance methodology
Gray	Calculated total within budget	Net ETO calculation, total potable residential water use
Purple	Sum of budget components or all variances for the associated budget category	Residential indoor water budget, annual aggregate real water loss

As of this version of the reporting form:

- Roughly 30% of required input cells are green or orange (supplier-provided), but they are mostly in the CII BMP sections
- About 25% of required input cells are yellow (pre-filled); another 25% are gray or purple (automatically calculated)



*Aspirational deadlines

Future engagement

- Board staff will reach out to subset of suppliers to test reporting form in mid-September
 - Will be sending survey out on listserv; please respond if interested in participating in the pilot (1 response per supplier)
 - Accompanying feedback form will gather supplier input on ease of reporting, points of clarification, errors, etc.
 - Reporting form will be made publicly available by October*
- Fall workshops to provide in-depth information on topics not covered in this presentation (e.g., variances, alternative data)

Contact information

- Reporting form: Marielle.Rhodeiro@Waterboards.ca.gov
- General questions: Waterconservation@Waterboards.ca.gov

Thank you!

Full presentation here: https://calwep.org/wp-content/uploads/2024/01/05-CalWEP_Reporting_Form_Presentation.pdf

BE WATER SMART

Conservation Regulation Assistance

What is most concerning now?

- List of what is due January 1, 2025
- Compliance requirement timeline - LADWP
- CII PM and BMP timelines pushed out, still a concern?
- What else?



BE WATER SMART

Conservation Regulation Assistance

- What other resources do you need right now?
- Revisit funding needs - November RWE PAC meeting
- RWA board presentation on September 12th



BeWaterSmart.info

June 2024- Estimate of reduction needed at compliance timesteps.
Does not reflect total budgets and future weather inputs.

RWA Urban Water Supplier	2025	2030	2035	2040
California American Water Company - Sacramento District	0%	0%	0%	0%
Carmichael Water District	0%	0%	-6%	-13%
Citrus Heights Water District	0%	0%	-1%	-9%
El Dorado Irrigation District	0%	0%	0%	0%
Elk Grove Water District	0%	0%	0%	0%
Fair Oaks Water District	-3%	-5%	-19%	-25%
Folsom	-12%	-15%	-22%	-25%
Georgetown Divide Public Utility District	0%	0%	0%	0%
Golden State Water Company - Cordova	-12%	-14%	-22%	-25%
Lincoln	-1%	-4%	-15%	-20%
Nevada Irrigation District	0%	0%	0%	0%
Orangevale Water Company	0%	0%	0%	-1%
Placer County Water Agency	0%	0%	-1%	-6%
Roseville	0%	0%	-3%	-7%
Sacramento	0%	0%	-9%	-14%
Sacramento County Water Agency	0%	0%	0%	0%
Sacramento Suburban Water District	0%	0%	-7%	-13%
San Juan Water District	0%	0%	-10%	-18%
West Sacramento	-4%	-8%	-17%	-21%
Yuba City	0%	-1%	-11%	-15%
Average Reduction	-2%	-2%	-7%	-11%

BE WATER SMART

2024 RWE PAC Meetings

Date
January 9, 2024
March 19, 2024 – SSWD
May 14, 2024 – San Juan Water District
July 23, 2024 – Roseville
September 10, 2024 – West Sac
November 12, 2024 – PCWA
December 6, 2024 – Holiday Social

Holiday Social: @ The Old Spaghetti Factory, Rancho Cordova, 11:30 am – 2:00 pm. All water efficiency staff are invited.





Announcements & Events