

**Thank you, City of Sacramento!**



**RWEPAC**

**January 14, 2024**

WELCOME

# Introductions

- Name
- Organization
- Looking forward to in 2025?



BE WATER SMART

# Agenda

- Welcome/Introductions
- November 2024 Meeting Notes
- Host Presentation from William
- Conservation Regulation – Reporting, Budgets and Savings
- Break
- Program Updates
- New for 2025?!?
- Agency Announcements/Adjournment
- Lunch @ 12:30 pm



BE WATER SMART

# Meeting Notes

- November 2024
- Approve and post online?



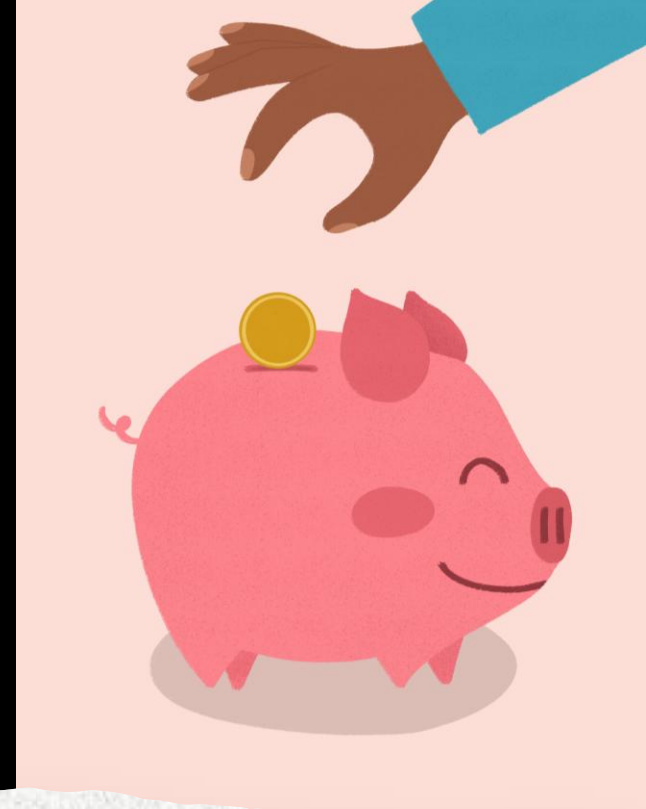
BE WATER SMART

# Host Presentation

- Take it away, William!



[BeWaterSmart.info](http://BeWaterSmart.info)



# Conservation Regulation

BE WATER SMART

# Conservation Regulation

- Reporting – how did it go?
- RWA/Local Supplier Budget Discussion
- Water Savings Analysis using meter data



# BE WATER SMART Reporting

- How did it go?

Supplier	Actual Use as Percentage of Objective
Sacramento	Under 16%
CHWD	Under 21%
SSWD	Under 12%
Other Suppliers	?

- Confirmation received, feedback from SWB staff?
- Lingering questions?
- Lessons learned for next year?





BE WATER SMART

# RWA and Local Supplier Budget

- Connection between annual budget and objective
- Asking for increased funding? Staffing?
- What should we do for WEP?
  - Consistent, modest annual increase at minimum



# Water Savings Analysis

- Collect supplier meter data for a variety of programs
  - Turf replacement
  - Customer water loss
  - Irrigation efficiencies
- Analysis of pre and post for participants & control group
- RWA staff and consultant support (\$\$\$)
- Goal: figure out which programs save the most water to meet objective
- 2025 project?



# Program Updates

**Nonfunctional Turf Model Ordinance and FAQs**  
**Rebate Participation and CII Focus Group**  
**BeWaterSmart Website Upgrade**  
**Grant Update**  
**Leadership Team**

# NFT Model Ordinance

- RWA model ordinance
- One regional definition of NFT
- Work started, send draft to NFT Ad Hoc Committee
  - Jace, Bruno, Joanna, William and Cheryl
- Add language for recycled water irrigation of NFT?
- Legal and Communications Review
- Ordinance versus FAQs
- March RWE PAC draft

## Model Ordinance Template

### Definitions

“Functional turf” means a ground cover surface of turf located in a recreational use area or community space. Turf enclosed by fencing or other barriers to permanently preclude human access for recreation or assembly is not functional turf.

“Nonfunctional turf” means any turf that is not functional turf, and includes turf located within street rights-of-way and parking lots.

“Turf” means a ground cover surface of mowed grass. Annual bluegrass, Kentucky bluegrass, Perennial ryegrass, Red fescue, and Tall fescue are cool-season grasses. Bermudagrass, Kikuyu grass, Seashore Paspalum, St. Augustine grass, Zoysia grass, and Buffalo grass are warm-season grasses.

“Disadvantaged community” means a community with an annual median household income that is less than 80 percent of the statewide annual median household income.

“Homeowners’ association” means a nonprofit corporation or unincorporated association created for the purpose of managing a common interest development.

“Community service organization or similar entity” means a nonprofit entity, other than an association, that is organized to provide services to residents of the common interest development or to the public in addition to the residents, to the extent community common area or facilities are available to the public. “Community service organization or similar entity” does not include an entity that has been organized solely to raise moneys and contribute to other nonprofit organizations that are qualified as tax exempt under Section 501(c)(3) of the Internal Revenue Code and that provide housing or housing assistance.

“Common areas” means that portion of a common interest development or of a property owned or managed by a homeowners’ association or a community service organization or similar entity that is not assigned or allocated to the exclusive use of the occupants of an individual dwelling unit within the property.

“Common interest development” means any of the following:

- (a) A community apartment project.
- (b) A condominium project.
- (c) A planned development.
- (d) A stock cooperative.

“Potable water” means water that is suitable for human consumption.

“Recreational use area” means an area designated by a property owner or a governmental agency to accommodate human foot traffic for recreation, including, but not limited to, sports fields, golf courses, playgrounds, picnic grounds, or pet exercise areas. This recreation may be either formal or informal.

“Community space” means an area designated by a property owner or a governmental agency to accommodate human foot traffic for civic, ceremonial, or other community events or social gatherings.

“Board” means California State Water Resources Control Board

### Prohibition of Irrigation of Nonfunctional Turf

(a) The use of potable water for the irrigation of nonfunctional turf located on commercial, industrial, and institutional properties, other than a cemetery, and on properties of homeowners’ associations, common interest developments, and community service organizations or similar entities is prohibited as of the following dates:

- (1) All properties owned by the Department of General Services, beginning January 1, 2027.
- (2) All properties owned by local governments, local or regional public agencies, and public water systems, except those specified in paragraph (5), beginning January 1, 2027.
- (3) All other institutional properties and all commercial and industrial properties, beginning January 1, 2028.
- (4) All common areas of properties of homeowners’ associations, common interest developments, and community service organizations or similar entities, beginning January 1, 2029.
- (5) All properties owned by local governments, local public agencies, and public water systems in a disadvantaged community, beginning January 1, 2031, or the date upon which a state funding source is made available to fund conversion of nonfunctional turf on these properties to climate-appropriate landscapes, whichever is later.

(b) Notwithstanding subdivision (a), the use of potable water is not prohibited by this section to the extent necessary to ensure the health of trees and other perennial nonturf plantings, or to the extent necessary to address an immediate health and safety need.

(c) The board may, upon a showing of good cause for reasons including economic hardship, critical business need, and potential impacts to human health or safety, postpone a compliance deadline in subdivision (a) by up to three years for certain persons, institutions, and businesses, and may create a form to be used for compliance certification to the board by property owners.

### Enforcement

- (1) A public water system, city, county, or city and county may enforce the provisions of this chapter.
- (2) To avoid duplication of enforcement, any entity identified in paragraph (1) that is not a retail public water system shall notify the retail public water system 30 days prior to enforcement of the provisions of this chapter against a property served by such system.
- (3) Nothing in paragraph (2) shall preclude enforcement by any entity identified in paragraph (1) once adequate notice is given.

BE WATER SMART

# Rebate Participation and CII Focus Group

- Identified rebate participation as a priority in PO subcommittee
- Focus on CII programs for conservation regulation requirements
- Host CII customer focus group in Q1 or Q2 2025
- Christine –initial meetings with consultant



BE WATER SMART

# BWS Website Upgrade

- It's time...12 years
- Need back in changes to work on phones
- Need restructure – not as intuitive for new folks
- Feels clunky – been adding and adding...
- Other feedback?
- Developing a scope
- Set up meetings with potential vendors
- Budget \$10,000 - \$15,000?



[BeWaterSmart.info](http://BeWaterSmart.info)



BE WATER SMART

# WEP Grant Update

Grant	Agreement #	Total Funding Remaining	Rebates Available For...	Must Be Used By....	Reporting to RWA	Supplier Availability Status	Additional Notes
Prop 1 Round 1 Project 7	4600013840	\$150,521	Turf replacement / Irrigation Efficiencies	1/31/2026	Quarterly	First come first serve	\$97,385.35 was transferred from a different project.
Prop 1 Round 1 Project 7	4600013840	\$28,985	Customer water loss	1/31/2026	Quarterly	First come first serve	
Urban Community Drought Relief Grant Project 2	4600015020	\$377,661	Turf replacement with Irrigation Efficiencies	7/31/2026	Quarterly	Individual supplier allocations	Contact RWA for individual supplier allocations.
Sac Sewer	80880	\$335,387	Clothes washers, toilets, Pre-rinse Spray Nozzles.	5/1/2025	Quarterly	First come first serve	Renews on an annual basis (will renew on July 1, 2025).



BE WATER SMART

# Leadership Team

- Join us!
- Greg, William, Bobby & Jace
- Meet a week before the RWE PAC to discuss the agenda
  - 30-minute meeting, 5 times a year
- Various other potential tasks throughout the year
- Valuable to me



BE WATER SMART

# Leak Detection Technology – Oldcastle Infrastructure

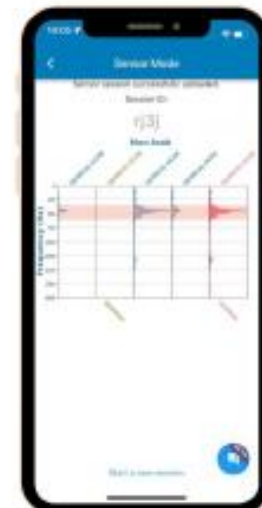
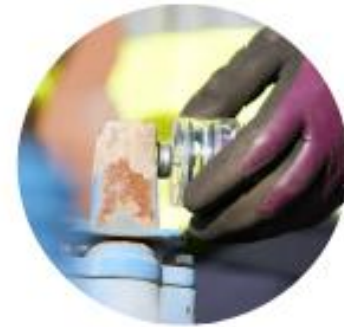
## How it Works

### AI-driven leak detection

- Proprietary sensors detect vibrations
- AI analyzes acoustic signatures
- Leaks are detected, pinpointed and sized
- Sensors remain temporarily for validation
  - Confirm and report issue resolution
  - Detect additional “hidden” leaks

### Need from supplier:

Need GIS files of pipes	5-20 miles a day.
Clean valves	7-13 sensors per mile.
Fix the leaks you want	94.4% accurate



## Non-Revenue Water Leak Detection:

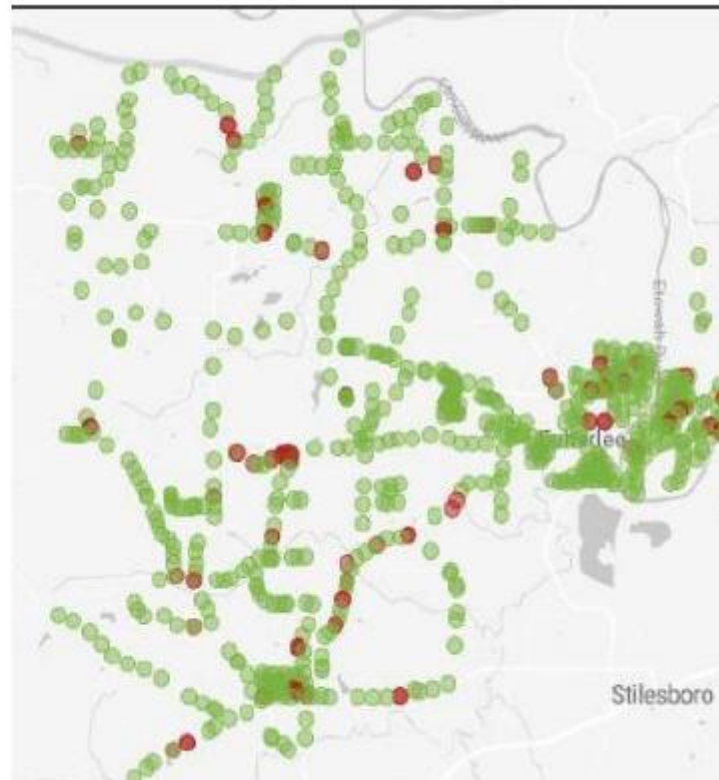
### Bartow County, GA

- Provided service on 80 miles of their water distribution system.

- Spatial representation of the leak status of all 792 sensors.

- The green dots indicate a 'no-leak' result

- The red dots show where the sensors have detected an acoustic signal, and the AI has deemed this as a point of interest or Waypoint



## Non-Revenue Water Leak Detection:

### Bartow County, GA

- The total estimated volume of leaks found and repaired was 83 GPM, 119,520 GPD, 43,624,800 GPY which according to the EPA (Environmental Protection Agency) is enough to supply approximately 1300 people for a year.
- Bartow County also achieved a 17.47% reduction in NRW where losses dropped from 25% to 20% on completion of repairs and saved the water utility \$130,874.40 per year in revenue

BE WATER SMART

# Random Updates

## Nippon Shokken

- Taped video with DWR yesterday
- Hope to have a final video in next couple of months

## Updating MWELO with changes?

## CLIA Exam

- Register by 1/15/2025 & Review and Exam on 1/24/2025

## Cancel Office Hours, scheduled for the 14th?



# Office Hours/Tours/2025 Tours

- One nature tour, one customer facility tour per year?
  - Watershed/headwaters bus tour
    - Kayaking option?
    - Middle/Southfork River
  - Delta Tour
  - Delta smelt fishery
  - Nigiri Project
  - Devil Mountain Wholesale Nursery, Clements (1 hour drive)
    - (new trees for changing climate)
- Other ideas?

BE WATER SMART

# 2025 RWEPAAC Dates

<b>Dates</b>	<b>Host Supplier</b>
<del>January 14, 2025</del>	<del>Sacramento</del>
March 11, 2025	TBD
May 13, 2025	TBD
July 8, 2025	TBD
September 9, 2025	TBD
November 18, 2025	TBD
December 5, 2025	You know where!
January 13, 2026	TBD





# Announcements & Events