



EFFICIENCY THROUGH COLLABORATION



CALIFORNIA
**WATER EFFICIENCY
PARTNERSHIP**

A Chapter of the *Alliance for Water Efficiency*

CaIWEF's Mission

Maximize urban water efficiency and conservation by:

- *Advancing research, training, and public education*
- *Building collaborative approaches and partnerships*
- *Supporting and integrating innovative technologies and practices*
- *Encouraging effective public policies*



CALIFORNIA
WATER EFFICIENCY
PARTNERSHIP

Making Water Conservation a California Water of Life

Available Tools and Resources



Overview of Available Resources

CalWEP is your implementation partner.

AVAILABLE NOW:

- **CalWEP Compliance Resource Hub (with interactive timeline!)**

Includes:

- **Cut sheets for each standard and CII performance measures**
- **Framework 101 slide deck**
- **NAICS to ESPM Crosswalk**
- **Disclosable Buildings Toolkit**
- **RFP Guidance and Template RFP**
- **CII DIM Identification Guidebook**
- **CII Classification Guidance Document**
- **CalWEP LAM Viewer Powered by WaterView**



Understanding the Regulation

CALIFORNIA WATER EFFICIENCY PARTNERSHIP October 2023 rev. 1

Urban Water Use Objective Cut Sheet

NOTE: DRAFT REGULATION CURRENTLY IN STATE WATER BOARD RULEMAKING PROCESS

The Outdoor Residential Standard

The Background

SB 606 and AB 1668, signed in 2018 and referred to as the Long-Term Framework legislation, are intended to make conservation a California way of life. The legislation tasked the California Department of Water Resource (DWR) with providing regulation recommendations to the State Water Resources Control Board (State Water Board) that include water use efficiency Standards and Performance Measures for urban retail water suppliers¹. Both are intended to improve water efficiency at an urban retail water supplier level. Standards establish quantitative requirements, such as annual water use relative to water budgets, that must be tracked and reported. Performance Measures are more qualitative in nature and will require implementation of various conservation measures and programs, for example. This cut sheet summarizes the State Water Board's proposed regulation as released on August 18, 2023². The first public comment period ended October 17, 2023³.

In total, three water use standards (indoor residential, outdoor residential, and commercial, industrial, and institutional dedicated irrigation meter (CI-DIM)) and one water loss standard, are used to calculate each respective efficient use volume. The sum of these volumes establishes an overall water budget known as an Urban Water Use Objective (UWUO).

Equation 1: Urban Water Use Objective (UWUO)

Urban Water Use Objective

Indoor Residential Water Budget + Outdoor Residential Water Budget + CI-DIM Outdoor Water Budget + Water Loss Budget + Adjustments if applicable

Where:

- Indoor Residential Water Budget** = efficient indoor residential water use
- Outdoor Residential Water Budget** = efficient outdoor residential water use
- CI-DIM Outdoor Water Budget** = efficient outdoor commercial, industrial, institutional dedicated irrigation meter water use
- Water Loss Budget** = total volume based on gallons per connection per day
- Variance Water Use** = Appropriately estimated water use for variances approved by the State Water Board that have a material effect on an urban water supplier's UWUO
- Temporary Provision** = Additional volume of water a supplier may request to add to its UWUO for a limited time for a specified beneficial use that will require less water over time
- Bonus Incentive** = Volume of potable water reuse approved by the State Water Board

1. Wholesale water providers are not subject to legislation requiring adherence to an Urban Water Use Objective
 2. [State Water Board Proposed Text of Regulation](#) (August 18, 2023)
 3. [Notice of Proposed Regulatory Action](#), State Water Board (August 18, 2023)

CALIFORNIA WATER EFFICIENCY PARTNERSHIP February 2025

Making Conservation a California Way of Life

Overview

SB 606 and AB 1668, signed in 2018 are intended to "Make Water Conservation a California Way of Life." In total, three water use standards (indoor residential, outdoor residential, and outdoor commercial, industrial and institutional (CI-DIM)), one water loss standard, and a variety of adjustments are used to calculate each urban water supplier's overall budget. The sum of these is known as an Urban Water Use Objective (UWUO).

Urban Water Use Objective (UWUO)

Indoor Residential Water Budget + Outdoor Residential Water Budget + CI-DIM Outdoor Water Budget + Water Loss Budget + Adjustments if applicable

Adjustments to an UWUO can be made via variances, temporary provisions, and/or a bonus incentive for potable reuse, where applicable per supplier. A variance or temporary provision must receive prior approval by submitting a request to the State Water Board.

In addition to the UWUO, every urban supplier will need to comply with a set of CII performance measures. These performance measures are intended to enable water-usage benchmarking per CII classification category as well as establish BMAPs for indoor and outdoor CII water use regardless of CII status. Even if an agency meets its UWUO, it will still need comply with the CII Performance Measures.

Provisional Data

In March 2024, the State Water Board released updated provisional data for every urban water supplier in the state used for their Water Use Objective Expiration Tool. The chart to the right shows projections for reductions needed by water suppliers in 2040 based on the State's provisional data. (Note the provisional data does not include potential variances that suppliers may be able to utilize to adjust their UWUO.)

20% No Reduction
 30% 20-25% Reduction
 25% 25-30% Reduction
 15% 30-35% Reduction
 10% 35-40% Reduction

CALIFORNIA WATER EFFICIENCY PARTNERSHIP About Membership Publications Program Areas Events

CalWEP Compliance Resource Hub The Framework Implementation Guides

How can we help?

- I want to understand the Making Conservation a Way of Life Regulation.
- I want to comply with the CII portions of the regulation.
- I want to satisfy reporting requirements (includes alternative data and variances.)
- I want to get support on the landscape-related requirements.
- I want to increase my agency's capacity through hiring consultants or external partners.
- I want to explore funding opportunities.

Charting the Course for Compliance

An educational series for urban water suppliers

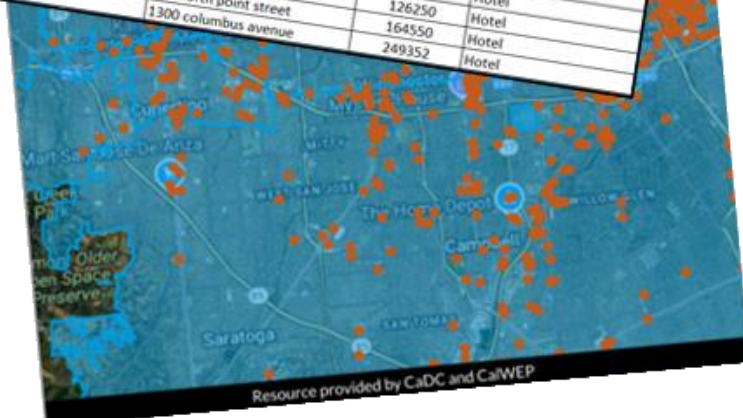
Presented by:

CALIFORNIA DATA COLLABORATIVE **CALIFORNIA WATER EFFICIENCY PARTNERSHIP**

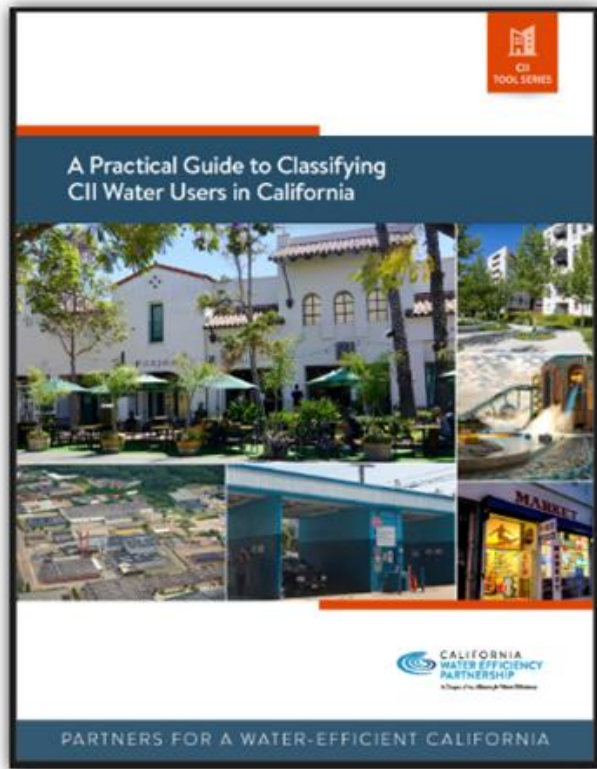
Identifying CII Customers

Information Reported for 2023, California Building Energy Benchmarking Program, Downloaded July 16, 2025

Property Name	Address 1	Property GFA - Calculated (Buildings) (ft ²)	Primary Property Type - Portfolio Manager - Calculated
redemption - 161			
170 baytech drive	161 nortech parkway	71800	Worship Facility
150-160 baytech drive	170 baytech drive	76799	Office
8435 fortran ave korean emmanuel church	150 baytech drive	150000	Office
2801 leavenworth-cannery, llc	4435 fortran drive	77805	Worship Facility
argonaut hotel-sv	2801 leavenworth street	133675	Office
4425 fortran dr	495 jefferson street	180000	Hotel
anchorage square (2800 leavenworth)	4425 fortran drive	76319	Office
hanaan taiwanese christian church	2800 leavenworth street	319933	Strip Mall
2720 taylor	4405 fortran court	66000	Worship Facility
the wax museum building	2720 taylor street	54967	Mixed Use Property
2160/2190 gold street	145 jefferson street	121481	Museum
hotel zephyr - whole building	2160 gold st	127124	Office
8718-san joes-santa clara	250 beach street	225235	Hotel
2100 gold street	2131 gold street	54439	Hotel
2130 gold street	2100 gold street	71169	Hotel
2300 stockton street, llc	2130 gold street	52142	Office
williams sonoma - 100 north point	2340 stockton street	44530	College/University
2150 gold street	100 north point street	60000	Office
siu plaza fisherman's wharf hotel	2150 gold street	52214	Office
simpton alton hotel fisherman's wharf	2500 mason street	345000	Hotel
san francisco fishermans ca hies	2700 jones street	126250	Hotel
1300 columbus ave	550 north point street	164550	Hotel
	1300 columbus avenue	249352	Hotel



Resource provided by CaDC and CalWEP



NAICS & EnergyStar Portfolio Manager Crosswalk

Version Number 1.0, July 2024

The NAICS & EnergyStar Portfolio Manager (ESPM) Crosswalk can help water suppliers utilize NAICS codes for categorizing their commercial water accounts according to the EnergyStar Portfolio Manager's Classifications and Sub-Classifications. These ESPM Categories also include the California State Water Resources Control Board's additional 4 categories. While the sub-classifications are not required to be utilized, they may be helpful for suppliers desiring more detailed classification to develop more focused water efficiency outreach efforts. NAICS is an industry classification system that groups establishments into industries based on the similarity of their production processes. It is a comprehensive system covering all economic activities. NAICS codes classify businesses based on the particular product or service they supply. While a business typically has a primary NAICS code, it can also possess multiple NAICS codes if it provides a variety of products and services.

Column Name	Column	Definition
NAICS Title	A	NAICS codes classify businesses based on the particular product or service they supply. While a business typically has a primary NAICS code, it can also possess multiple NAICS codes if it provides a variety of products and services.
NAICS Code	B	A numerical code that corresponds to the type of business.
CII Classification	C	Classification of businesses can be Commercial, Industrial, Institutional. The commercial, industrial, and institutional (CII) sector is the most diverse group of water users in urban areas. Water usage in this sector varies greatly depending on the industry and the specific facility.
EnergyStar Classification	D	The 22 broad categories follow the EPA EnergyStar classification system, the industry standard for benchmarking commercial buildings. Each category represents the primary use of water. This includes the CA-SWRCS four additional classifications.
EnergyStar Sub-Classification	E	The 80+ sub-categories using the EPA EnergyStar classification system, the industry standard for benchmarking commercial buildings. This includes the CA-SWRCS four additional classifications as sub-classifications.
User Notes	F	Important details, preferences, or insight relevant to the NAICS code to consider for documentation.

Direct Technical Assistance

Get UWUO-Ready with Less Time, Less Cost, and More Confidence

Join CalWEP's Direct Technical Assistance Pilot: AI-Assisted CII Classification

A Smarter, Faster Way to Meet UWUO Requirements

- One-time, cost-effective technical assistance
- AI + expert review delivers secure, accurate, UWUO-ready results in weeks (95%+ accuracy)
- Powered by CalWEP | Delivered by MEA | Built for California water suppliers

MEA = Maureen Erbeznik & Associates

Reporting, Variances, and Alternative Data

CalWEP and CaDC's UWUO Variance Estimator

agencies evaluate whether pursuing a specific variance is practical and cost-effective. By estimating how many qualifying items (e.g., evaporative coolers, livestock, special landscapes) need to be present in a service area that provides a clear understanding of how much of the variance is required, allowing agencies to assess whether the benefits of qualifying for a variance outweigh the administrative and operational

Indoor Variances		5% Threshold Water Use (gal)		5% Threshold Water Use (AF)	
5% Threshold Water Use (gal)	5% Threshold Water Use (AF)	2025	18,034,495	55	
28,304,304	87	2030	17,777,372	55	
24,932,595	77	2035	14,785,590	45	
32,960,276	101	2040	16,277,079	50	

Evaporative Coolers		Recycled Water with High TDS		Emergency Events	
Average Evaporative Rate (gal/hr)	The number of evaporative coolers required to qualify for the UWUO variance is estimated to be 1,048 in 2025 and 1,221 in 2040.	Yes	Use detailed plant based leaching requirements?	Water used for emergency response can qualify for a UWUO variance if the water usage is estimated to be 18,034,495 gal (55.35 AFY) in 2025 and 16,277,079 gal (49.95 AFY) in 2040.	
Average Days of Use per Year		1000	Average TDS (mg/L)		
Hours per Use per Day		Sprinkler System	Irrigation Type		
		Turfgrass (Cool-Season)	Plant Type		

Seasonal Population		Dust Control for Animal Corrals	
Do you have detailed detailed daily or hourly Advanced Metering Infrastructure data?		3	Select Climate Zone
Seasonal Occupancy Rate %		The total square footage of animal corrals required to qualify for the UWUO variance is estimated to be 1,103,951 sqft (25.34 acres) in 2025 and 996,374 sqft (22.87 acres) in 2040.	
Seasonal Duration (Days/Yr)			

Ponds and Lakes for Sustaining Wildlife	
Number of dwelling units involved for a 1% seasonal population UWUO variance is estimated to be 2,433 in 2025 and 3,171 in 2040.	The total pond and lake surface area required to qualify for the UWUO variance is estimated to be 380,754 sqft (8.74 acres) in 2025 and 343,651 sqft (7.89 acres) in 2040.

CALIFORNIA WATER EFFICIENCY PARTNERSHIP October 2024

Making Conservation a California Way of Life

Requesting Approval of Alternative Data Sources

Introduction

This guidance document helps water suppliers request approval for various alternative data sources under the Making Conservation a California Way of Life regulatory framework and Urban Water Use Reporting. It provides a detailed explanation of the minimum requirements, the process for approval, and considerations for supplier staff resources.

A supplier must, for each reporting year, use an alternative data source for reference if it demonstrates to the Department of Water Resources (DWR), in coordination with the State Water Board, that the data are equivalent, or superior, in quality and accuracy to the data provided by the DWR.

Before requesting approval for alternative data sources, it is recommended to first determine if the supplier can meet its Urban Water Use Objectives using the standard data. Exploring, if possible, the available standard data can help minimize compliance efforts, save money, and ensure that the alternative data request is truly necessary for achieving your objectives.

This document includes the following Sections:

- Types of Alternative Data Sources and Request Process
- General Documentation Requirements for All Alternative Data Sources
- Public Process Requirements for Alternative Data Approval
- Submitting Alternative Data Request
- Approval Process
- Validity and Reliability
- When Alternative Data May Be Necessary

Section 3: Types of Alternative Data Sources and Request Process

Water suppliers may require approval for several types of alternative data sources. Request for approval of an alternative data source can be made either separately for each type of data or combined.

When documenting the use of alternative data on each data type, additional details can be found in the Guidelines and Methodologies for Calculating UWUO (2021, 018) document or by contacting DWR.

CALIFORNIA WATER EFFICIENCY PARTNERSHIP October 2024

Making Conservation a California Way of Life

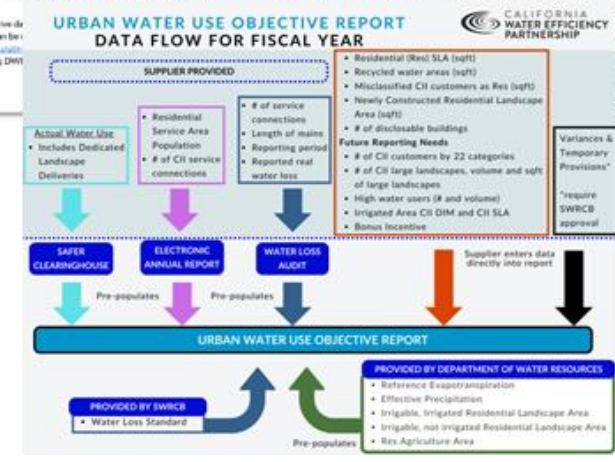
Urban Water Use Objective Reporting Contacts: Agency Staff and Required Data

This contact list provides a comprehensive directory of agency staff responsible for data related to the Urban Water Use Objective (UWUO). It is designed to help agencies easily identify where and to whom they should direct their data inquiries. Each entry includes the name and email of key contacts, ensuring smooth communication and support for compliance efforts.

Preferred Email Subject Line: "Urban Water Use Objective Support: [Agency Name] - Assistance Needed on [Specific Data/Topic]"

For any topics not listed or for general assistance, please reach out to CRPP-WaterConservation@waterboards.ca.gov or WUEStandards@water.ca.gov.

General Reporting Questions	Residential Service Area Population
Marielle Rhoades	DDW District Office Contacts
Marielle_Rhoades@waterboards.ca.gov	DDW-EAR@waterboards.ca.gov
State Water Board	Electronic Annual Report
For inquiries related to overall report submission and guidelines.	For questions on calculation of residential population data
Reference Evapotranspiration	Effective Precipitation
Bekete Temesgen, Ricardo Trezza	Bekete Temesgen, Mortiza Orung
WUE_LAM@water.ca.gov	WUE_LAM@water.ca.gov
DWR - CIMIS	DWR - CaSIM ETAW
For assistance with using or validating	For support with effective precipitation data and methodologies.



Landscape Area Measurement

Supplier Tools

CalWEP LAM Explorer

Water District Totals

Service Area	7.73 SQMI	ET	45.66 IN
Population	63,083	Peff	5.47 IN
Total Parcels	19,774	LEF (2025)	0.8
Total RES Extensions	19,716	GPCD	47
Source	DWR Annual Report	Vintage	12/1/2024

RES LAM Totals




Total Res Parcels	19,144	NI Area	74,160,100 SQFT
II Area	28,052,369 SQFT	Extension II Area	8,648,025 SQFT
INI Area	9,411,037 SQFT		

CII LAM Totals

Total CII Parcels	577	Vegetative Cover INI	66,796 SQFT
II Area	23,016,580 SQFT	Bare Earth INI	76,692 SQFT
NI Area	44,922,330 SQFT	Pervious NI	1,402,521 SQFT
Impervious	34,125,970 SQFT	Undeveloped Lands	8,328,086 SQFT
Pools	23,124 SQFT	Horse Corrals	0 SQFT
TruGrass II	12,621,304 SQFT	Open Water	1,054,270 SQFT
Canopy II	6,608,465 SQFT	Artificial Turf	11,483 SQFT
Vegetative Cover II	1,047,446 SQFT	Agricultural Land	2,079,794 SQFT
Bare Earth II	636,447 SQFT		
Turfgrass INI	414,796 SQFT		



All your state provided data in ONE PLACE

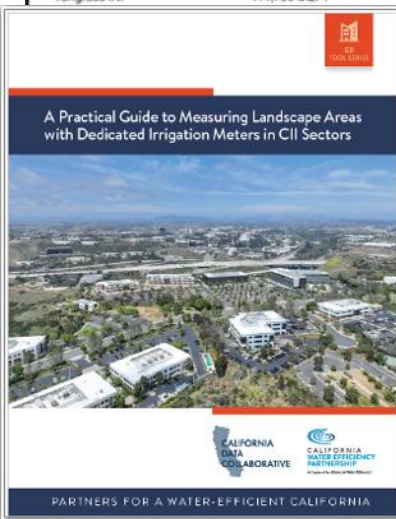




Indoor Residential Water Budget + Outdoor Residential Water Budget + CII-DIM Outdoor Water Budget



CaIWEP LAM Explorer

POWERED BY **WATERVIEW**
Water Efficiency Software



A Practical Guide to Measuring Landscape Areas with Dedicated Irrigation Meters in CII Sectors

CALIFORNIA DATA COLLABORATIVE | CALIFORNIA WATER EFFICIENCY PARTNERSHIP

PARTNERS FOR A WATER-EFFICIENT CALIFORNIA



CALIFORNIA
WATER EFFICIENCY
PARTNERSHIP

Accessibility in Action

*CalWEP's New Multilingual Glossary and
Community Insights Tool*

CalWEP's Multilingual Glossary

GLOSSARY

Filter by

All Categories



Search Glossary



ENGLISH

SPANISH



access shaft

Industry Terminology

pozo de acceso



Accessory dwelling unit (ADU)

Industry Terminology

vivienda secundaria



account holder

Industry Terminology

Titular de la cuenta



acidic

Industry Terminology

Ácido



adjust (sprinklers)

Landscape

ajuste de rociadores / aspersores



Community Insights Tool



- This tool **provides** :
 - demographic data for specific addresses, including census tract information, surrounding 10-mile area statistics, and water agency profiles.
- The tool **displays**:
 - Housing details, income levels, languages spoken, race/ethnicity data, and environmental factors like pollution rankings
- The tool **uses**:
 - live data from various websites with no ongoing maintenance required.

<https://calwep.org/insights>



This tool can be used for planning community events, targeting rebate programs appropriately, and supporting grant applications.



CALIFORNIA
WATER EFFICIENCY
PARTNERSHIP

Trainings and Events Update

What's new with CalWEP Trainings



LEAK REPAIR ELITE

Leak Detection & Repair Certificate for Professionals

NEW Training Partnership with CalWEP and IAPMO In-person Leak Repair Elite training in English for plumbing professionals

- Pilot trainings are currently underway (EBMUD, Valley Water, Orange County, and BAWSCA)
- Permanent program offering roll out in 2026
- Participants will learn best practices from IAPMO trainers and earn a certificate of completion to elevate their professional credentials.
- Additionally, participants can choose to take an optional exam to be listed in a new **Leak Repair Elite referral directory**. This new directory will be utilized by sponsoring and participating water agencies throughout California to connect customers with Leak Repair Elite plumbers.

CalWEP 2026 Events

Spring Plenary – March 18, 2026
Location: Irvine, CA

Peer to Peer – May 27-28, 2026
Location: Napa, CA

Fall Plenary – September 10, 2026
Location: Elsinore Valley, CA

Winter Plenary – December 10, 2026
Location: Sacramento, CA

- **+ bi-monthly webinars available at no-cost to members!**



CALIFORNIA
WATER EFFICIENCY
PARTNERSHIP

Additional Initiatives

A couple more updates, stick with me!



Coalition for Water Data Streamlining



Mission Statement:

To streamline California's water data to improve efficiency, increase data confidence, and deliver data that matter. By aligning what agencies collect with what the State truly needs, we create a system that is, clearer and more equitable. This dual-purpose initiative strengthens local agencies, informs state decision-making, and advances the Governor's Climate Plan – ensuring water data works for everyone.

Scan code to
register now!



LANDSCAPE MAINTENANCE WORKSHOP

Help Shape California's new Landscape Maintenance App

- 📅 **Date & Time:** December 16th at 9:00 A.M.
- 📍 **Location:** Virtual
- ✓ **Register Here:** <https://tinyurl.com/Agency-virtual>

The California Water Efficiency Partnership is developing a new landscape maintenance app to help property owners and professionals care for native and climate-appropriate landscapes.

Before development begins, we're inviting water agency staff and partners to provide early input on how the app should work, its features, functions, and level of detail, to ensure it's practical, accurate, and easy to use statewide.

Why Participate:

- » Share what information, visuals, or reminders users will find most useful.
- » Help identify how detailed maintenance guidance should be for different audiences.
- » Provide feedback on usability, layout, and data needs before the app is built.
- » Collaborate with peers to design a tool that agencies and customers alike can trust.

Your feedback will directly shape the prototype and ensure it reflects real-world needs.

LESS LAWN

MORE SOLUTIONS

Navigating AB 1572 for Utilities and Customers





CALIFORNIA
WATER EFFICIENCY
PARTNERSHIP

AB 1572

Prohibits the irrigation of non-functional turf (NFT) with potable water on CII properties beginning in 2027

LESS LAWN MORE RESOURCES!

AB 1572 Toolkit:

- Outreach toolkit
- Internal Agency toolkit
- Customer-facing website



SECTOR-SPECIFIC MATERIALS

1. General Guidance
2. CII
3. HOA
4. Municipal Governments
5. Property Management Companies
6. Educational Institutions
7. Landscape Company
8. Developers



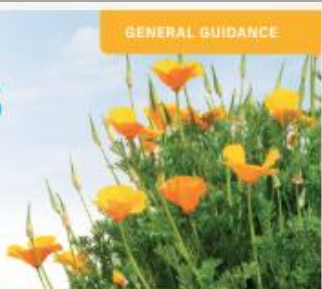
General Guidance Materials

LESS LAWN MORE SAVINGS

GENERAL GUIDANCE

Fact Sheet: New Rules for Watering Lawns in California

California law (AB 1572) will prohibit the use of potable (drinking) water to irrigate nonfunctional turf—lawns that serve no recreational or community purpose—at most commercial, industrial, and institutional (CII) properties, including common areas managed by homeowner associations (HOAs).



California poppy (Leptosiphon californicus), California native

This fact sheet explains what's changing and how to prepare.



Functional Lawn



Nonfunctional Lawn

WHAT IS NONFUNCTIONAL LAWN?

Nonfunctional lawn refers to irrigated lawn that is ornamental and not regularly used for recreation or public gatherings.

Functional Lawn

- School fields
- Sports fields
- Picnic areas
- Designated play spaces
- Any other areas where people regularly gather, play, or engage in recreational activities

Nonfunctional Lawn

- Lawn in medians, roundabouts, or parking lots
- Decorative strips along sidewalks
- Unused patches near signage or building entries
- Lawn between buildings with no clear use
- Decorative lawn along sidewalks, building edges, or fences
- Stoped or oddly shaped areas that are hard to use or water efficiently

WHAT'S CHANGING

- Many properties will no longer be allowed to use potable water to irrigate lawn that isn't actively used for play, gatherings, or other functional purposes.
- These properties must stop watering lawns by their deadline.

The intent is not to remove all green spaces, but to stop wasting drinking water on unused lawns.

WHO NEEDS TO COMPLY?

- Commercial, industrial, and institutional properties (offices, retail centers, schools, hospitals, etc.)
- Common areas of HOAs
- Public agency landscapes (parks, civic campuses, medians)

WHAT HAPPENS IF YOU DON'T COMPLY?

Failure to comply with AB 1572's nonfunctional lawn irrigation restrictions can result in civil penalties of up to \$500 per day (California Water Code §1846). Enforcement specifics may vary by water agency; please contact your local provider for details.

COMPLIANCE TIMELINE

January 1, 2027

Public properties owned or managed by local governments, including public school districts

January 1, 2028

Commercial, industrial, and institutional properties

January 1, 2029

Common areas managed by homeowner associations, common interest development, and community service organizations

January 1, 2031

Public properties in Disadvantaged Communities, contingent upon available state financial assistance or when state funding for turf replacement becomes available

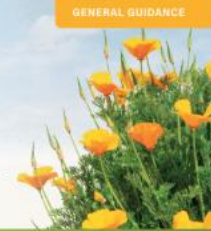
Note: You are not required to replace lawn by these dates—only to stop irrigating with potable water.

LESS LAWN MORE SAVINGS

GENERAL GUIDANCE

Rebates & Incentives for Replacing Nonfunctional Lawn

Many California water providers offer rebates and incentives to help customers reduce water use, especially when converting a nonfunctional lawn. Whether you're replacing lawn, updating irrigation, or planting water-wise landscapes, many programs are available to help cover costs and provide guidance.



California poppy (Leptosiphon californicus), California native

This guide outlines common incentives offered by water providers.



Lawn Replacement Rebates: Get pre-approved to receive money for every square foot of nonfunctional lawn you replace with low-water plants, mulch, or other approved materials.

Irrigation System Upgrades: Rebates may cover drip irrigation parts, weather-based sprinkler timers, high-efficiency controller modules, or flow meters.

Tree Rebates: Some agencies help cover the cost of planting new trees, including mulch, compost, and professional installation. Or, some energy utilities offer tree shade trees.

Water-Wise Surveys: Many providers offer free Water-Wise Surveys to help identify areas for improvement and recommend water-saving upgrades.

Landscape Design Support: Free site visits, water use evaluations, and advice from certified professionals may be available. Plant lists and other design resources can also be found online at sites like calscape.org and NonFunctionalTurfCA.org.

Customized Rebate Programs: Some providers offer tailored rebate programs to meet the specific needs of businesses or large properties. These may include flexible incentives based on project type, water savings potential, or site conditions.

Water Use Reports and Monitoring Tools: Some water providers offer dashboards, smart meter data, or personalized reports to help track consumption and find ways to save.

Educational Workshops and Resources: Free classes, webinars, and step-by-step guides may be available to help property owners, managers, and landscapers learn about efficient irrigation, low-water landscaping, and other ways to use less water.



LESS LAWN MORE TREES

GENERAL GUIDANCE

Best Practices for Existing Trees During Lawn Conversion

California's new lawn watering rules (AB 1572) were created to help save potable (drinking) water by phasing out its use for irrigating nonfunctional turf—lawns that serve no recreational or community purpose—at most commercial, industrial, and institutional (CII) properties, including common areas managed by homeowner associations (HOAs). But removing lawn can affect nearby trees—especially if they're used to regular watering.



California poppy (Leptosiphon californicus), California native

This guide explains how to protect your existing trees while creating a more water-wise landscape.

Trees are Worth Protecting

Trees offer big benefits for neighborhoods and the environment—often saving more water than they use.

- They cool the air and shade streets and property
- They retain soil moisture and reduce runoff
- They filter pollution and support birds, pollinators, and other wildlife
- They add beauty and value to businesses, homes, and communities

Lawn Removal Can Stress Trees

Removing lawn helps save water—but it can hurt trees if done the wrong way. Be careful to avoid:

- Damaging roots by digging or scraping anywhere under the tree canopy
- Removing lawn without updating irrigation to keep trees healthy
- Cutting off irrigation too quickly
- Heat stress from replacing lawn with gravel, bare soil, or hard surfaces
- Chemical or soil damage from herbicides used in lawn removal or soil compaction

Lawn Areas That Might Not Meet the New Rules

To comply with the new law, some lawn areas may no longer be allowed to use drinking water for irrigation if they have these characteristics:

Too narrow to be used – less than 10 feet wide

Just for looks – not used for play, walking, or gathering

Blocked off or fenced – not easily accessed by people

Near signs or buildings – with no clear public use

On a steep slope – difficult to walk on or water efficiently

SPOT THE DIFFERENCE BY PROPERTY TYPE

Commercial and Office Sites

ALLOWED: Lawn with picnic benches or used as an outdoor break area

NOT ALLOWED: Lawn in planter strips or narrow borders with no foot traffic



Homeowner Associations and Apartments

ALLOWED: Lawn in courtyards, near play structures

NOT ALLOWED: Lawn along property edges, near entry signs, or between buildings with no access



Schools and Educational Campuses

ALLOWED: Fields, Physical Education areas, or designated outdoor classrooms

NOT ALLOWED: Lawn at drop-off zones, near flagpoles, or around parking lots



Hospitals and Campuses

ALLOWED: Accessible healing gardens or walkable open spaces

NOT ALLOWED: Lawn hidden behind fences, walls, or not accessible for use



Local Governments and Public Agencies

ALLOWED: Civic lawn used for events or gathering

NOT ALLOWED: Lawn in medians, at facility entrances, or on slopes where use isn't possible



Need Help Reviewing Your Site?

Many water providers offer support to evaluate lawn areas, plan improvements, and access rebates. Services may include site visits, irrigation reviews, guidance on replacing lawns with low-water landscaping, tips for protecting trees during conversion, and tools like plant lists, design templates, or irrigation guides appropriate for your local climate. In addition, professional landscape contractors can help review your site and make sure your project follows the rules while still looking great. Local water agencies or landscape programs may also provide useful resources—like tree protection guidelines, recommended plant lists, sample designs, and planning tools—to make the process easier.



NonFunctionalTurfCA.org

Next Steps

Materials available now!

Phase 2 – Spanish translation and videos starting soon

<https://calwep.org/nft>

Clarity • Consistency • Compliance



CalWEP members are at the forefront of implementing California's nonfunctional turf ban. This page provides exclusive access to the full suite of Assembly Bill 1572 (AB 1572) resources designed to support consistent, effective communication and implementation statewide.

- **The internal agency guidebook, *Less Lawn, More Compliance: A Guide for Water Suppliers Navigating AB 1572***, including model ordinances, policy language, enforcement options, and communication best practices.
- **Editable outreach materials and design files** (PDFs, InDesign zip files including photos and fonts) for each sector-specific piece of collateral in the **Nonfunctional Turf Outreach Toolkit** – ready for co-branding with your agency's logo and local program details for each of the following audiences:
 - General Guidance
 - Commercial, Industrial, & Institutional
 - Property Management Companies
 - Landscaping Companies
 - Homeowners' Associations
 - Public Properties
 - Educational Institutions
 - Developers
- **CalWEP's Customer-Facing Website** – a one-stop statewide hub, the site helps Californians understand what the law means, who it applies to, and how to take action.

Use these materials to align messaging, plan outreach, and support consistent, effective implementation across California.

Together, we're turning policy into action.



Stay Involved with CalWEP

- **Attend our events** – CalWEP’s Winter Plenary is Dec. 11th at North Natomas Community Center!
- **Participate on committees** – Program Committee & Research and Eval. Committee
 - Task forces include: Landscape, CII, Grants & Funding, Education & Outreach, Wholesaler, Water Loss, Language and Accessibility
- Make sure you’re getting our **CalWEP Connect newsletters** and have CalWEP whitelisted at your agency

Thank you!

Tia Fleming

tia@calwep.org

Have more ideas/needs, let us know!

