



# THE SACRAMENTO WATER EFFICIENCY UPDATE- JANUARY RWE PAC

January 13, 2026

William Granger  
Water Conservation Coordinator  
City of Sacramento



# WATER CONSERVATION TEAM



**Gracie Razo**

Water Conservation Representative



**Alek Crnogorac**

Water Conservation Specialist



**Lance Eicher**

Water Conservation Specialist



**Evan Waters**

Water Conservation Specialist



**Jaime Orozco**

Water Conservation Specialist



**Phillip Berkley**

Water Conservation Representative



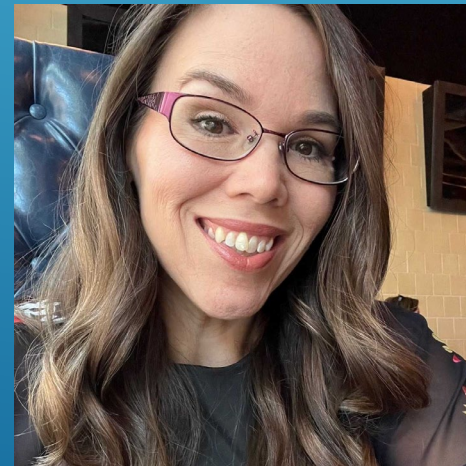
**Abby Bleichner**

Water Conservation Representative



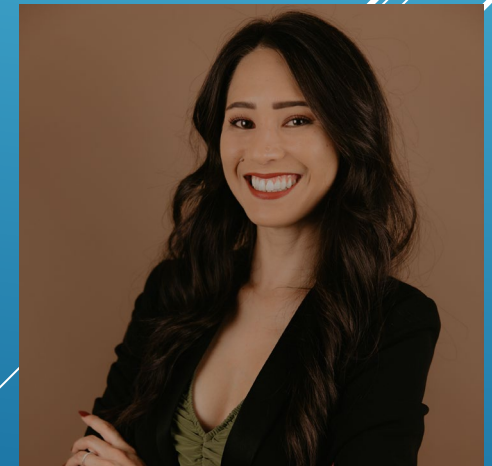
**Maureen Coulson**

Administrative Technician



**Laura Trejo**

Customer Service Representative



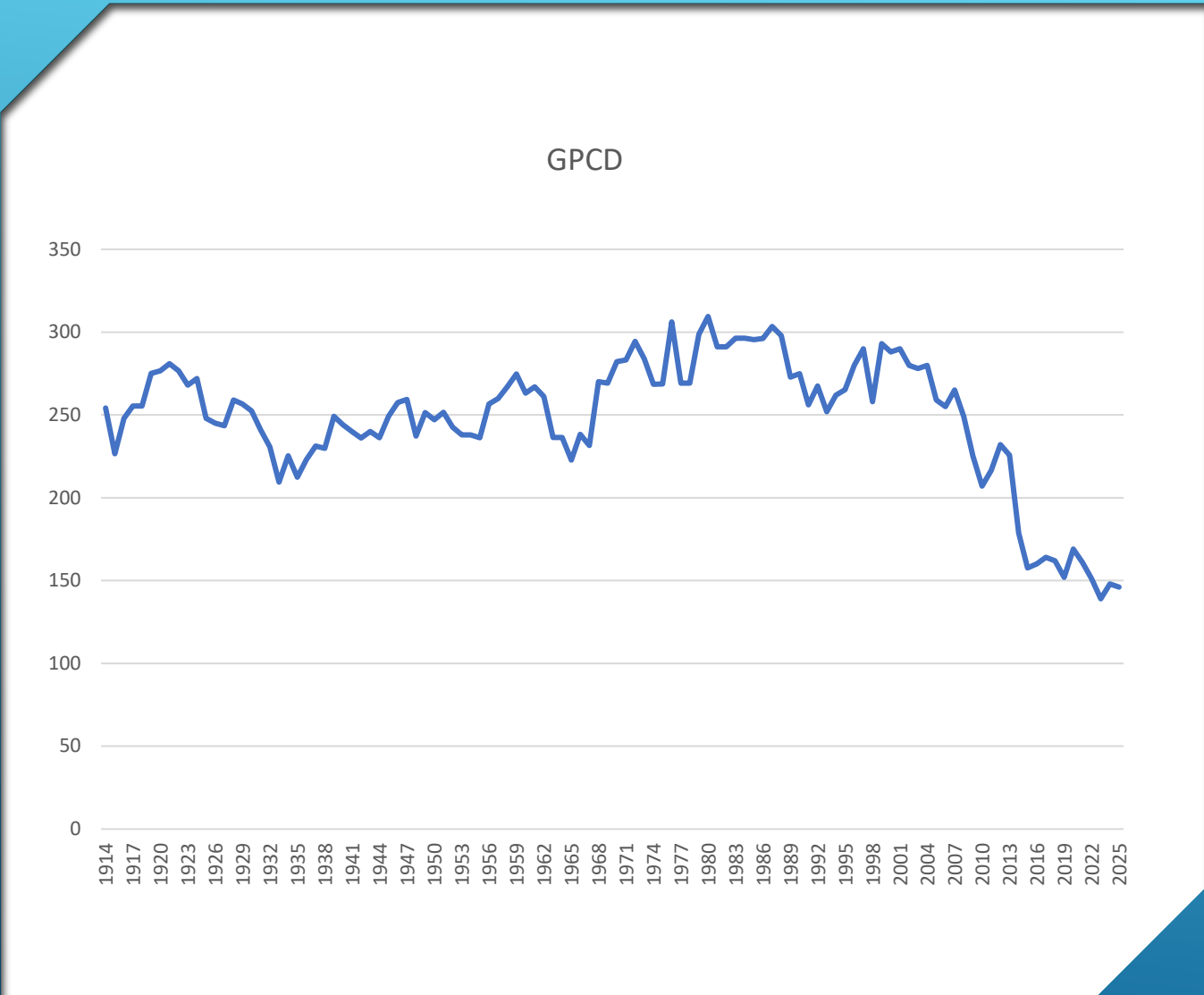
**Alysson Aredas**

Public Information Coordinator



# CITY OF SACRAMENTO GPCD

1914-2025





# FY 24/25 URBAN WATER USE OBJECTIVE REPORT



- ▶ 1B gallons below our target
- ▶ Need to make headway on our CII& MUM classifications
- ▶ Need to ask IT for data even earlier this year
- ▶ Will finalize our NFT ordinance



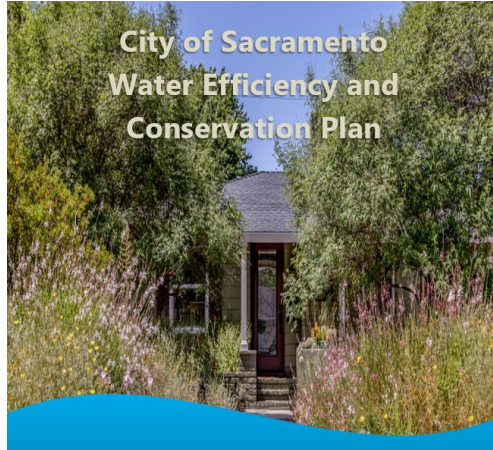
### Get more for using even less

Changes coming to City of Sacramento's residential toilet rebate program, starting Jan. 1

[MORE INFO](#)

Sacramento residents can soon get more cash back for replacing old, inefficient toilets.

Starting Jan. 1, the Department of Utilities is updating its residential toilet rebate program to offer a higher rebate amount and support even more water-efficient options.



### City of Sacramento Water Efficiency and Conservation Plan



### Washer rebates end Dec. 15

Get up to \$125 back when you upgrade

[LEARN MORE](#)

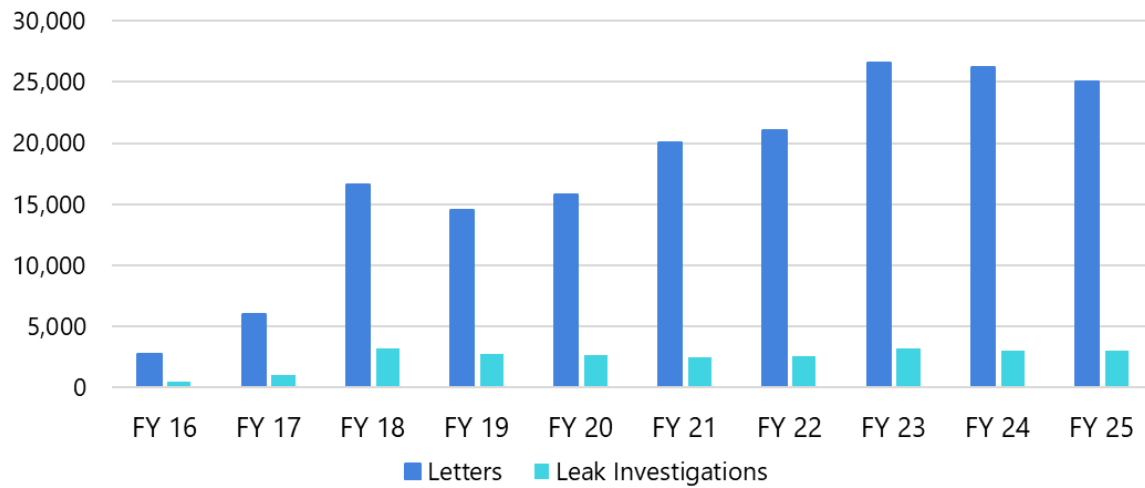
Time is running out for Sacramento residents to apply for a rebate on a high-efficiency washer.

The City's [High-Efficiency Washer Rebate Program](#) will end on Dec. 15 after more than 15 years of helping residents reduce indoor water use.

Eligible customers can receive up to \$125 toward a new high-efficiency washer that uses up to 50% less water than older models.

To participate, please review the program requirements and submit your application and receipt by Dec. 15.

# RECENT CHANGES



# AMI LEAK LETTERS

Badger Meter: Making Water Vi x +

https://beacona.net/admin/portfolio/monitor

SeamlessGov SeamlessDocs: Next... Cityworks SharePoint eCAPS UNIVERSITY ENTER... CCB Login K2workplace 3 Support for Latitude... UtilitiesNexus Nexus City website... SeamlessDocs: RFL... Documents NEXUS... All Bookma

**BEACON®** Type your search ? WG

Monitor

65 meters Class Code singlefamily Leak Rate > 10 CF Leak Duration 60 to 90 Days Leak Duration 90 Days or more Clear Filters Actions

Tags

- Continuous Flow Expected
- Critical Needs Customer/No Valve Control
- DHS Code
- District
- Funding
- Has Irrigation
- Has Lawn
- Ignore Threshold
- Main Use
- Site
- Text 10

Accounts

- Autopay
- Biller Autopay
- Billing City
- Billing State
- Billing ZIP
- Class Code SINGLEFAMILY (65)
- EyeOnWater
- Paperless
- Service Point Class Code Normalized
- Status
- Vacant Property

**Total 1,686,339 Gallons**

Minute Hour Day Week Month Year Today

Print/Download Daily for January 2026 More Options

Day	Consumption (Gallons)
1	200,000
2	200,000
3	200,000
4	200,000
5	190,000
6	200,000
7	200,000
8	210,000
9	100,000
10	0
11	0
12	0
13	0
14	0
15	0
16	0
17	0
18	0
19	0
20	0
21	0
22	0
23	0
24	0
25	0
26	0
27	0
28	0
29	0
30	0
31	0

Consumption (Gallons)

Day

Total of 65 Meters

Cards

Page 1 of 3

Sort By: Leak Rate

Leak Detected: 631 Gallons/hour (84 Cubic Feet/hour) beginning Jun 12, 2025 11:00 PDT

# BEACON/ MY WATER LEAK PORTAL



# AMI LEAK LETTER THRESHOLDS

City of  
**SACRAMENTO**  
Department of Utilities

Premise Type	Premise Type Description	Include Letter Switch	Leak Days Threshold	Leak Rate Threshold
APTS	Apartment Complex	N	5	5000
ASGLFAM	A Single Family Dwelling	Y	4	150
BOARDHM	Boarding-Shelter-Convent-Group	Y	5	350
CEM/MORT	Cemetery/Mortuary	Y	3	350
CHURCH	Church	Y	4	350
CNVSNT	Convalescent Home	N	5	500
COMMON	Common Area	Y	3	600
COMOFFIC	Commercial Office	N	5	750
COMRETAL	Commercial Retail	N	5	500
COMWAREH	Commercial Warehouse	N	5	2000
CONDO	Condominium	N	5	100
DRAIN	Drain Inlets	N	5	100
DUPLEX	Duplex	Y	4	200
FICT	Fictitious Premise	N	5	100
FIRESTN	Fire Station	N	5	200
FOURPLEX	Fourplex	Y	4	300
GOLF	Golf Course	N	5	100
HOSPITAL	Hospital	N	5	100
HTL/MTL	Hotel / Motel	N	5	500
HYDRANT	Hydrant Permit	N	5	100
IRRIG	Irrigation	Y	3	600
MEDIAN	Median	Y	3	600
MIXEDUSE	Mixed Use - Res & Com	N	5	100
MOBILHM	Mobile Home Park	N	5	100
MULTIRES	Multiple Residential Structure	N	5	100
OTHER	Other	N	5	100
PARK	Park	Y	3	600
PARKLOT	Parking Lot	Y	3	500
PRVSCHOL	Private School	Y	3	600
PUBSCHOL	Public School	Y	3	600
TOWNHOME	Townhome	N	5	100
TRIPLEX	Triplex	Y	4	250
TRUCKPMT	Truck Permit	N	5	100

# City of Sacramento Outdoor Rebates

**Grass Conversion**  
Up to \$3,000  
Calculated at \$1.50  
per square foot  
Can include labor

1



**Irrigation Upgrade**  
Up to \$400  
Can include labor

2



3

**Smart Irrigation Controller**  
Up to \$400  
Can include labor



5

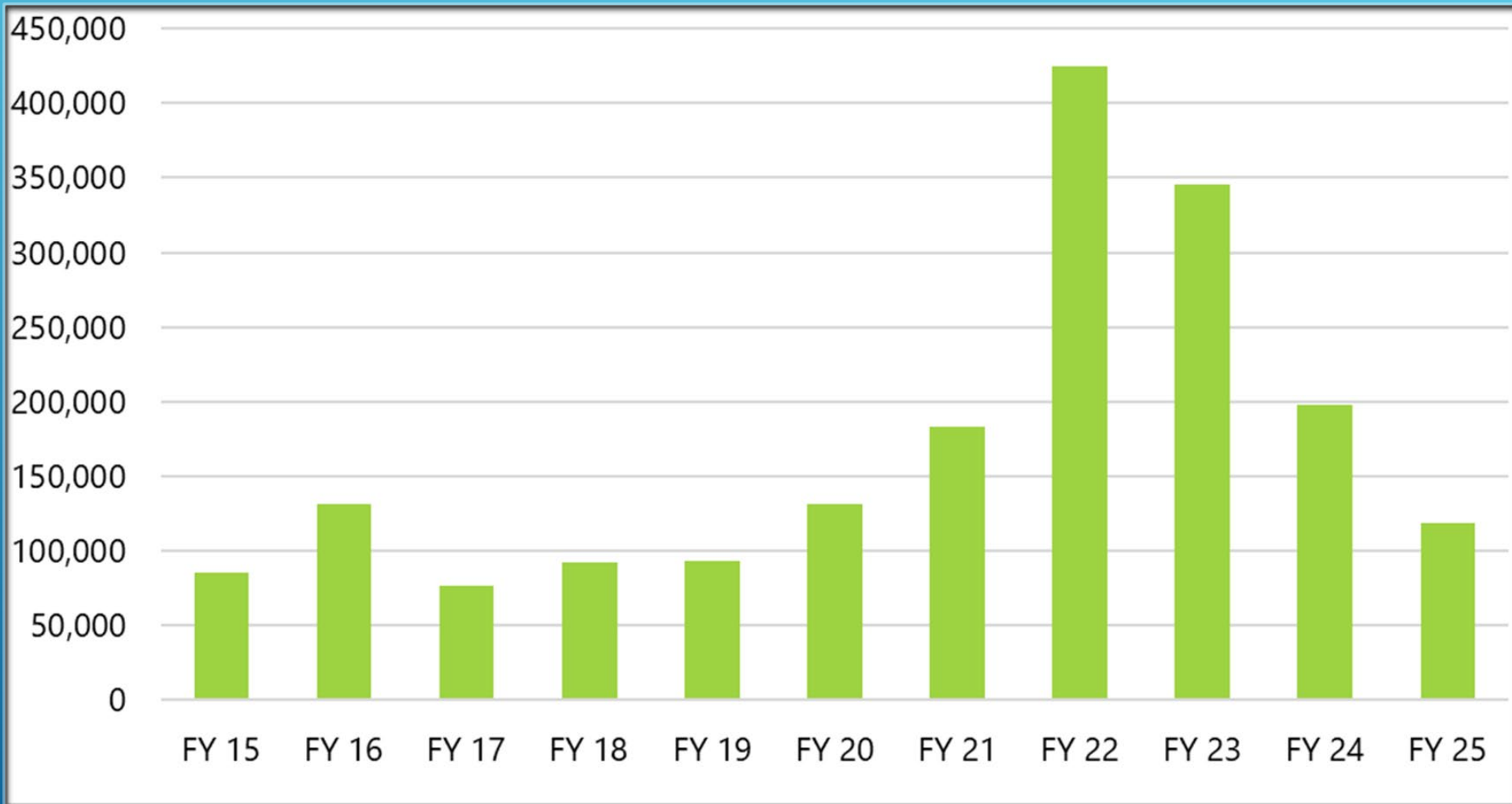
**Laundry-to-Landscape**  
Up to \$100 for materials

4

**Rain Barrel**  
Up to \$150  
\$0.75 for each gallon  
of storage capacity



# ELEVEN YEARS OF TURFGRASS TRANSFORMATION: 2014 TO PRESENT



# PLANNED OUTREACH IN 2026

Turf rebate campaign- early spring  
2x/week watering schedule

Outreach events:

March: RFL basics webinar, Fix a Leak week webinar

April: Gardens Gone Native Tour, ECOS Earthday

May: Mulch Mayhem

September: Water Wise Garden Showcase



# Questions?

**Email:**

[wgranger@cityofsacramento.org](mailto:wgranger@cityofsacramento.org)

**Call:**

916-808-1417

