

Thank you, CWD!



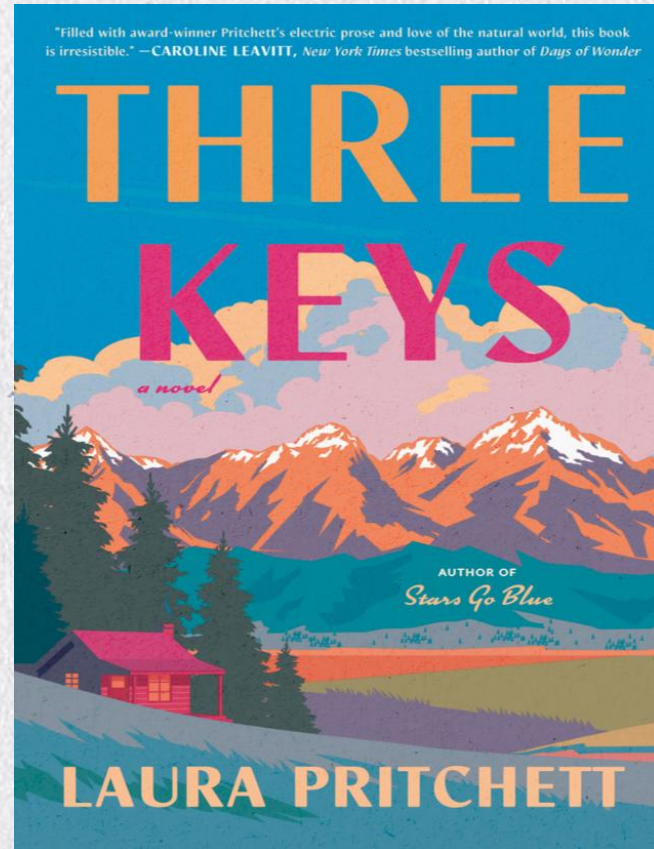
RWEPAC

May 12, 2026

BE WATER SMART

Introductions

- Name
- Organization
- Favorite summer book (audio or print) or movie



BeWaterSmart.info

BE WATER SMART

Agenda

- March 2026 Meeting Notes
- Host Presentation – CWD
- Fiscal Year 2026/2027 Budget
- Program Updates
- Break
- NFT Discussion, Template and Status Chart
- Agency Announcements/Adjournment
- Lunch @ 12:30 pm



BE WATER SMART

Meeting Notes

- March 2026
- Approve and post online?



BE WATER SMART

Local Presentation



BeWaterSmart.info

Carmichael Water District

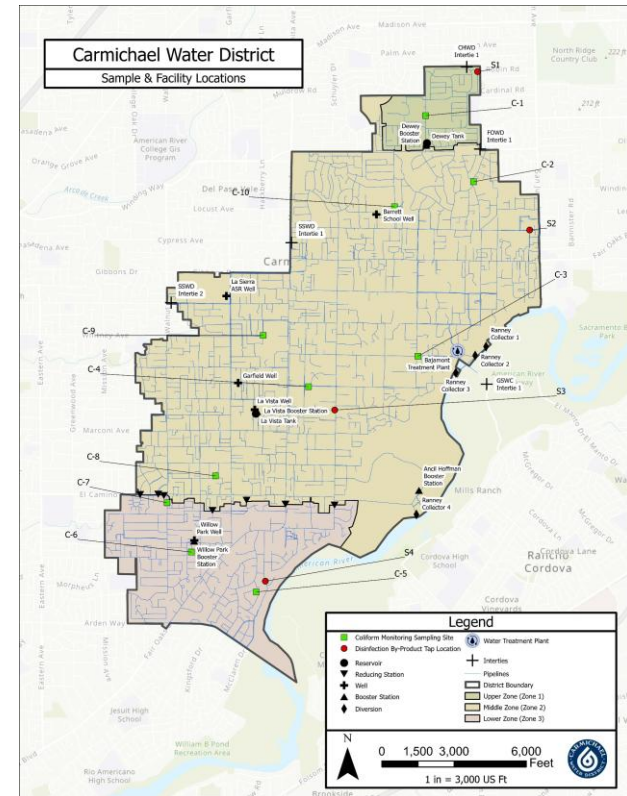


Our District

Began as Carmichael Irrigation District in 1915

Currently manages

- Approximately 12,000 service connections
- 220 miles of pipeline
- 6 wells
- 2 water tanks
- 1 Water Treatment Plant
- 3 Ranney Collectors
- 5 district interties



Our Water System

System Condition

- Developed as agricultural use transitioned to residential/domestic use
- Average pipeline age 54 years old
- 95.6% of our connections are residential use

Metering

- Via Neptune
- Radio Reads
- Nutating Disc, Ultra Sonic and Compound meters



Water Conservation Effort

- Water Waste Reports
- Leak Checks
- Irrigation Surveys
- Turf Replacement Rebates



Water Waste Reports

Reported by staff or public, common causes include

- Broken irrigation lines, sprinklers and valves
- Overwatering
- Leaks
- Via Carmichaelwd.org or 916-483-2452

Our results

- Timely response
- Reduced wasted water
- Approximately 50 reports a year



Irrigation Survey

Requested by customer, includes

- Free sprinkler heads
- Sprinkler adjustments
- Timer adjustments
- Locates broken irrigation lines, sprinklers and valves

Our results

- Reduced overwatering and leaks
- Positive customer interaction
- Reduced water usage by landscapes



Leak Checks & Exemptions

Requested by customers or staff, common causes include

- Corroded or aging lines
- Faulty appliances
- Broken or mismanaged irrigation timers
- Tampering or accident

Our results

- Positive customer interaction
- Reduced wasted water



Turf Replacement Rebate

Before



Applied for by Customer, 2\$ per sqft up to 1000sqft

- Residential or commercial
- Drought tolerant plants
- Mulch or rock
- Irrigated by driplines

Our results

- 43 Turf Replacements
- 49,187 sqft of turf replaced
- Positive customer interaction



After



FREE MULCH Available for Pick-Up
Mulch available for customers of hosting agencies

Saturday, May 16, 2026
8 a.m. to 12 p.m. (or while supplies last)

Sacramento County

Carmichael: Carmichael Water District
7837 Fair Oaks Blvd. in Carmichael
Hosted by Carmichael Water District
Bring a shovel, container or tarp, and a means to haul away.
Info: (916) 483-2452 or carmichaelwd.org

Sacramento: Sacramento Suburban Water District Facility
917 Enterprise Dr., Sacramento, CA 95825
Hosted by Sacramento Suburban Water District
Bring a shovel, container or tarp, and a means to haul away.
Info: (916) 972-7171 or sswd.org

Sacramento: City of Sacramento Corporation Yard
5730 24th Street in Sacramento
Hosted by the City of Sacramento
Open-back truck/trailer fill or self-loading station (bring a shovel) A few shovels will be available
Info: (916) 808-5605

Limit 1 yard per customer

(enough to fill a pick up truck)

- For personal use only; not for resale or commercial use
 - First-come, first-served until supplies are gone
 - Contact hosting water providers for additional details
-

Placer County

Lincoln: Lincoln Airport
1420 Flightline Drive (Open Field Adjacent to Airport) in Lincoln
Hosted by the City of Lincoln
Bring a shovel, container or tarp, and a means to haul away.
Info: (916) 434-2450 or lincolnca.gov/water

Rocklin: Sierra College, Overflow Parking Lot
Corner of Rocklin Rd. and El Don Dr. (opposite the campus) in Rocklin
Hosted by Placer County Water Agency and San Juan Water District
Bring a shovel, container or tarp, and a means to haul away.
Info: (530) 823-4850 or pcwa.net

Roseville: Parking Lot – Foothills Blvd.
Entrance located at 9100 Foothills in Roseville
Hosted by the City of Roseville
Open truck and trailer fill only—no shovels required
Info: (916) 774-5761 or roseville.ca.us/mulchmayhem



More information at BeWaterSmart.info/mulch-mayhem

WATER EFFICIENCY PROGRAM

BUDGET ADOPTION

MEETING

Planning Today for a Sustainable Tomorrow



-  RESPONSIBLE SPENDING
-  RELIABLE SERVICE
-  STRONG COMMUNITY
-  CLEAN WATER FOR ALL



PLAN INVEST PROTECT

Reserves

- FY 25/26 - Projected to be \$329,000
- Reserve Policy Approved by WEP and RWA Board
 - \$150,000 for grant floating
 - \$100,000 for program
 - \$50,000 for drought/redesign
- FY 26/27 – Projected to be \$300,000
 - Using \$20,000 in this year's budget
- Checking back on October to confirm

2025-2026 Budget Overview

- **5% dues increase**
 - **\$295-\$2,297 per agency**
- RWA Budget Salary Share
 - Past policy: 20% of staff/office costs covered by RWA budget each year
 - FY23 - \$56,000 (20%)
 - FY24 - \$95,000 (30%)
 - FY25 - \$68,000 (20%)
 - **FY26 - \$119,000 (40%)**
 - **FY27 – No Salary Share**
 - New policy based on FTEs
 - **0.95 FTE for WEP – Split .7 Amy and .25 Monica**
 - Pay salary, benefits and overhead
 - Basically, around the same NET cost for FTE versus salary share

2025-2026 Budget Overview

FY 2025/2026

FY 2026/2027

Table 1. Category 1 Budget Summary

Table 1. Category 1 Budget Summary

Program Revenues FY 2024-2025	
Projected FY 2024-2025 Category 1 Revenues ¹	\$513,000
RWA Salary/Office Share (40%)	\$119,000
FY 2023-2024 Reserve/Carry Over Funding	\$10,000
FY 2024-2025 Grant Administration Revenue	\$20,000
Total Revenues	\$662,000

Program Revenues FY 2026-2027	
Projected FY 2026-2027 Category 1 Revenues ¹	\$539,000
FY 2025-2026 Reserve/Carry Over Funding	\$20,000
Water Saving Study	\$8,000
Total Revenues	\$567,000

Program Expenses FY 2024-2025	
Program Management and Implementation, Technical Assistance	
Staff, Legal, Office Expenses, Travel, Financial and Audit Services	\$399,000
Water Efficiency Consulting Services	\$20,000
Best Management Practices (BMP) Implementation Categories ²	
Public Outreach	\$212,000
School Education	\$14,000
Landscape	\$17,000
Total Expenses	\$662,000

Program Expenses FY 2026-2027	
Program Management and Implementation, Technical Assistance	
Staff, Legal, Office Expenses, Travel, Financial and Audit Services	\$317,000
Water Efficiency Consulting Services	\$35,000
Best Management Practices (BMP) Implementation Categories ²	
Public Outreach	\$185,000
School Education	\$15,000
Landscape	\$15,000
Total Expenses	\$567,000

2026-2027 Budget Overview

Table 2. BMP Implementation Categories

PUBLIC OUTREACH		\$185,000
Regional Outreach Campaign	Common message and branding	\$185,000
	Media buys and marketing (i.e., TV and Radio ads, PSA's)	
	Events Team and collateral	
	Outreach consultant and additional partnerships	
SCHOOL EDUCATION³		\$15,000
Educational Presentations	Partnership for delivery of educational presentations to schools and public venues	\$15,000
LANDSCAPE		\$15,000
Landscape Outreach Activities	Landscape Education Partnerships (Harvest Day, etc.)	\$5,000
	Gardensoft Gallery renewal for BeWaterSmart.info website	\$5,000
	Professional Trainings (QWEL/ReScope CA, etc.)	\$5,000
TOTAL		\$215,000

BE WATER SMART

Budget Over Time

	FY 19	FY 20	FY 21	FY 22	FY23	FY24	FY25	FY26	FY27
Public Outreach	\$180,000	\$200,000	\$200,000	\$200,000	\$215,000	\$215,000	\$224,000	\$212,000	\$185,000
School Education	\$20,000	\$20,000	\$20,000	\$20,000	\$20,000	\$20,000	\$14,000	\$14,000	\$15,000
Landscape	\$23,000	\$25,000	\$22,000	\$22,000	\$22,000	\$22,000	\$27,000	\$17,000	\$15,000
Reserve Funding	\$40,000	\$40,000	\$40,000	\$111,000	*\$9,000	\$53,000	\$92,000	\$10,000	\$20,000
Total Budget	\$543,000	\$567,000	\$570,000	\$559,000	\$588,000	\$651,000	\$684,000	\$662,000	\$567,000
Grant	Yes	Yes	Yes	Yes	Yes	Yes	Yes	Yes	No
Carryover	Yes	Yes	Yes	Yes	Yes	Yes	Yes	Yes	No
Salary Share	30%	40%	40%	0%	20%	30%	20%	40%	0%
WEP Dues Increase	0%	0%	0%	0%	0%	3%	3%	10%	5%
RWA Dues Increase	4%	5%	5%	0%	3.7%	0%	5%	0%	5%

*BEF funding offset reserve need.

Budget Recommendations

- ✓ Amy to meet with Tom regularly to review RWA admin income and expenses
- ✓ Regular dues increases > 5% to keep up with costs
- ✓ Never have excess reserves, always designate and use within the current fiscal year
- ✓ Grants = more budget flexibility

BE WATER SMART

Questions and Approval Discussion

- ✓ Each supplier votes – Yes, no, or abstain



BeWaterSmart.info

Program Update



BE WATER SMART

Public Outreach Update

Exploring the BWS Toolkit with Max

- 1 January 2026-Indoor Tips
- 2 February 2026-Indoor Tips
- 3 March 2026-Leaks
- 4 April 2026-Sprinkler Spruce-up
- 5 May-Mulch
- 6 June-Water Early In The Morning
- BWS 2025 Toolkit
- BWS Brewery Partnership
- BWS Conservation Regulations
- BWS Editorial Calendar
- BWS Key Messages and PIO Briefing
- BWS Newsletter-Website Text
- BWS Photo Gallery
- BWS Public Opinion Research
- BWS School Hip Hop Drip Drop
- From Partners
- Resource Library
- Spanish Language Materials
- WEP Annual Reports

BE WATER SMART TOOLKIT

Purpose

- Consistent regional messaging
- To help YOU!

Example from EID

The image shows a Facebook post from El Dorado Irrigation District. The main content is a green advertisement for the 'Be Water Smart' toolkit. The ad features the text 'WATER Smarter, NOT Harder' and 'Control your sprinkler timer from your phone, save water, and earn rebates.' It includes a smartphone mockup displaying a water usage interface with '3h 42m time used' and '0 min time saved'. The ad also mentions 'Weather Intelligence skips' and 'Actual:' vs 'Scheduled:' water usage bars. A 'BY ZONE' section shows 'Rear Drip' with a '1h 53m' timer. The 'Be WATER SMART' logo for the Regional Water Authority is at the bottom.

The Facebook post includes the following text:

El Dorado Irrigation District
April 15 at 12:56 PM · 🌐

Water smarter, not harder 💧 📱

Upgrade to a smart sprinkler controller you can manage right from your phone. These systems automatically adjust your watering based on the weather, helping you save water and keep your landscape healthy 🌿

💡 Rebates available to help offset the cost. Check your eligibility here: <https://www.eid.org/customers/water-efficiency/residential>

#WaterYouDoingToSaveWater #WaterWise #SaveWater #WaterEfficiency #Rebates

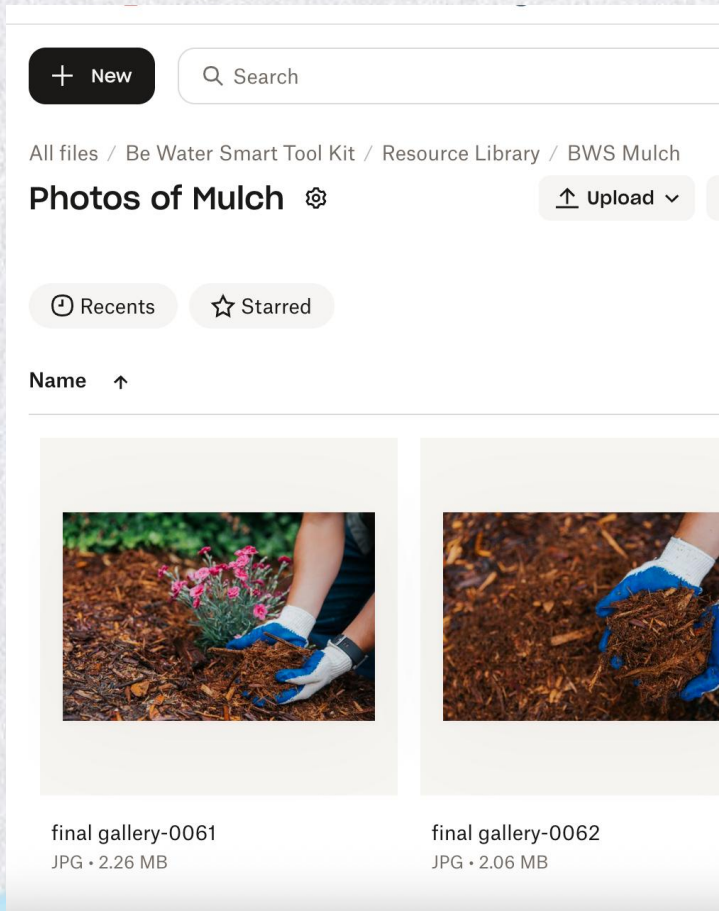
2 likes, 1 comment

Comment as Max McSlavkin

BE WATER SMART TOOLKIT

What's In It?

- Photos
- Graphics
- Videos
- Messaging Documents



The screenshot shows a file management interface. At the top, there is a '+ New' button and a search bar. Below that, the breadcrumb path is 'All files / Be Water Smart Tool Kit / Resource Library / BWS Mulch'. The main heading is 'Photos of Mulch' with a share icon and an 'Upload' button. There are tabs for 'Recents' and 'Starred'. A table header shows 'Name' with an upward arrow. Two image thumbnails are visible:

- Thumbnail 1: A person's hands in blue gloves are shown adding mulch to a pink flower. Below it is the caption: 'final gallery-0061' and 'JPG • 2.26 MB'.
- Thumbnail 2: A person's hands in blue gloves are shown holding a pile of mulch. Below it is the caption: 'final gallery-0062' and 'JPG • 2.06 MB'.



WEEK OF JUNE 1

Image/video suggestion: [Water In The Morning Graphic](#)

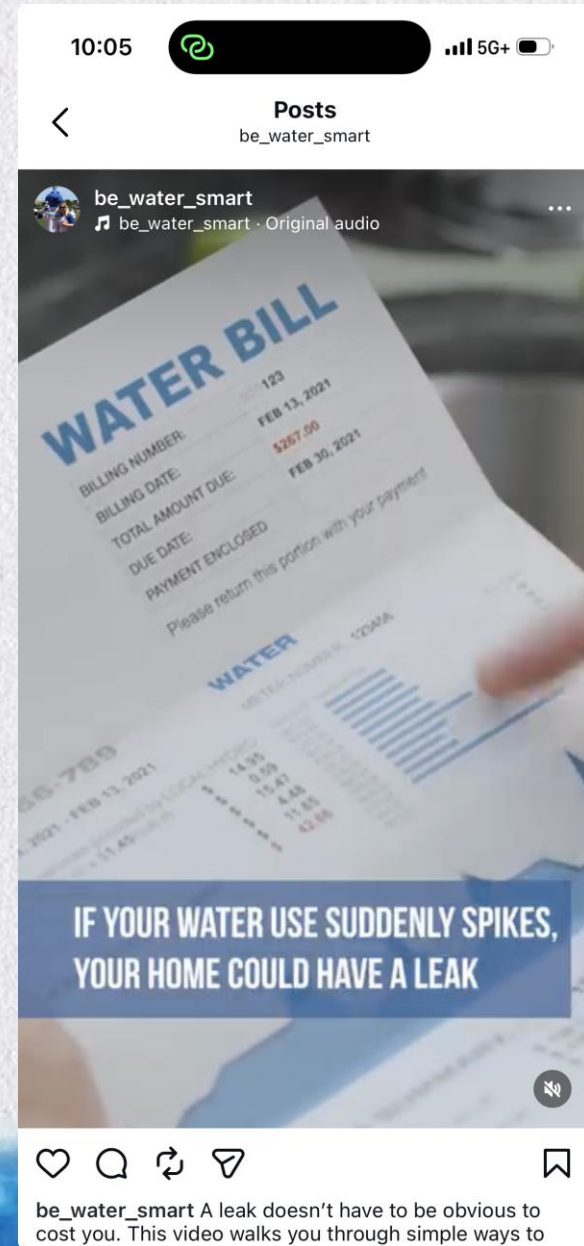
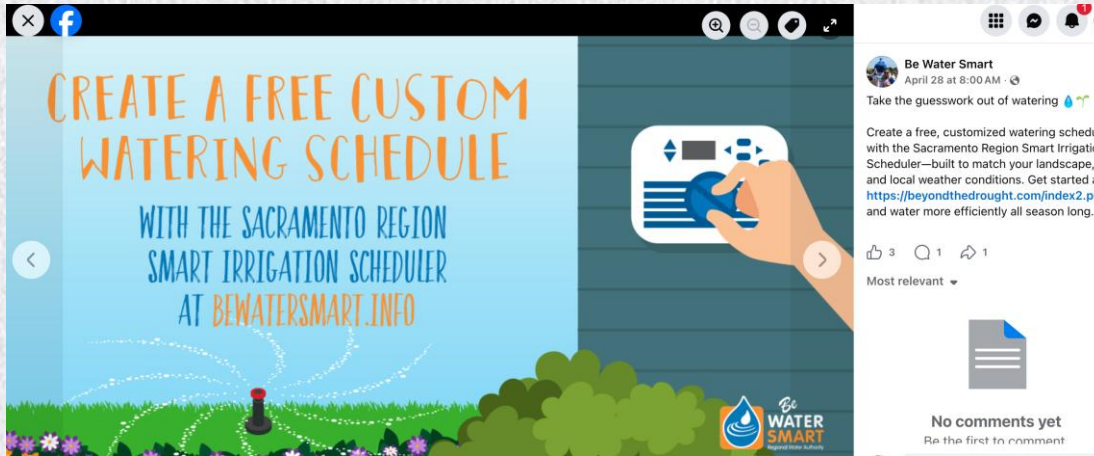
Facebook and X

Watering early in the morning helps you beat the heat, reduce evaporation, and keep your plants healthier longer. A simple shift in timing can save up to 50 gallons each time you water. Set that alarm a little earlier and let your irrigation work smarter this summer. 🌱

WaterSense

June 5: Make a splash this #WorldEnvironmentDay by making sure your pool is prepped for warmer weather to avoid water waste. Check out the WaterSense pool water efficiency guide for tips! <https://www.epa.gov/system/files/documents/2022-09/ws-outdoor-pool-guide.pdf>

BE WATER SMART TOOLKIT: Simplified Share From BWS On Social





BE WATER SMART TOOLKIT

Let's Dive In!

- [Social Media Post](#)
 - [NFT Flyer](#)
 - What else are you working on?
- 

Your Ideas For The Toolkit & Beyond

- What else would you like to see in the toolkit?
- What other communications tools & technologies are using that we should incorporate?
- What are your public outreach pain points right now?

BE WATER SMART

Public Outreach Update

Don't forget our remaining May social media posts!

Week of May 18

May 20 is World Bee Day—step outside and listen. 🐝 That buzz? It's a sign your yard is thriving.

Adding native plants creates habitat for bees, birds, and butterflies—while using less water.

Learn how to grow a habitat at

home: <https://bewatersmart.info/grow-a-garden-build-a-habitat-native-plants-bring-wildlife-home/>



Week of May 25th

Memorial Day may be behind us, but summer is just getting started—time to reset your watering routine.

- Water early in the morning 💧
- Use cycle and soak (short watering cycles with breaks so water can soak in) 🕒
- Check for leaks or overspray 👁️

A quick check now can save water all summer long!



BE WATER SMART

Public Outreach Update

Don't forget our May Article!

Fire-smart mulch: The right choice can help protect your home—and your landscape

By Debbie Arrington
Guest Writer

Most homes lost in wildfires aren't burned by flames—they're ignited by embers. And what's on the ground around a home can make a difference.

Mulch plays a key role in both plant health and fire behavior. The right type, applied correctly, can provide plant health benefits like conserving soil moisture, suppressing weeds, and providing plant nutrients, and help reduce fire risk. The wrong mulch can increase fire risk.

So, what's the best choice for moisture and fire safety?

Start with composted mulch:

Composted mulch is less flammable than non-composted organic mulches while providing plant health benefits.

"Research indicates that composted mulch is less flammable," explains Bruno Pitton, UC Cooperative Extension Environmental Horticulture Advisor for Placer and Nevada Counties. "It holds moisture, and its smaller particles limit the airflow that feeds flames."

<https://bewatersmart.info/fire-smart-mulch-the-right-choice-can-help-protect-your-home-and-your-landscape/>

BE WATER SMART

Public Outreach Update

BWS Articles Current and Upcoming

- ✓ May Theme- Mulch
- ✓ June Theme – Watering early in the morning

Public Outreach Update

- NFT Webinar – May 21st @ noon
 - Share with your customers
 - Registration required
 - 20-minute presentation, then Q&A

Customers can sign up at: BeWaterSmart.info/NFT

Additional dates:

- August 12th
- October 8

BE WATER SMART

Mulch Mayhem – Saturday, May 16th

Guiding the Sacramento Region to
Be Water Smart

Find your rebates and watering guidelines [Submit](#)

EVENT
Free Water Saving Mulch Available Saturday, May 16, 2026


SPOTLIGHT
What is the New Nonfunctional Lawn Law for Businesses, Public Institutions and HOAs?

PROMOTION
Free Leak Detection Kit, Moisture Meter, Gardening Gloves, or Drink Koozie

MULCH MAYHEM

Example of Nonfunctional Lawn

Are you water smart?
Find out more ways your family can save water inside and outside the home. [Water Use Calculator](#)



BE WATER SMART

Mulch Mayhem – Saturday, May 16th

Sacramento County

Carmichael: Carmichael Water District
7837 Fair Oaks Blvd. in Carmichael

Hosted by Carmichael Water District

Bring a shovel, container or tarp, and a means to haul away

Info: (916) 483-2452 | carmichaelwd.org

Sacramento: Sacramento Suburban Water District Facility
917 Enterprise Drive in Sacramento

Hosted by Sacramento Suburban Water District

Bring a shovel, container or tarp, and a means to haul away

Info: (916) 972-7171 | sswd.org

Sacramento: City of Sacramento Corporation Yard

5730 24th Street in Sacramento

Hosted by the City of Sacramento

Open-back truck/trailer fill or self-loading station (bring a shovel)

A few shovels will be available.

Info: (916) 808-5605

Placer County

Lincoln: Lincoln Airport

1420 Flightline Drive (Open Field Adjacent to Airport)

Hosted by the City of Lincoln

Bring a shovel, container or tarp, and a means to haul away

Info: 916-434-2450 | lincolnca.gov/water

Rocklin: Sierra College, Overflow Parking Lot

Corner of Rocklin Rd. and El Don Dr. (opposite the campus) in Rocklin

Hosted by Placer County Water Agency and San Juan Water District

Bring a shovel, container or tarp, and a means to haul away.

Info: (530) 823-4850 | pcwa.net

Roseville: Parking Lot – Foothills Blvd.

Entrance located at 9100 Foothills in Roseville

Hosted by the City of Roseville

Open truck and trailer fill only – no shovels required

Info: (916) 774-5761 | roseville.ca.us/mulchmayhem

BE WATER SMART

Earth Day Event -dot voting pictures

Drought & Water Reliability

Increase water security during longer dry periods



Store more water in wet years: Capture extra water for future dry periods.



Expand groundwater recharge: Move water underground to store it for later use.



Improve water system flexibility: Use surface water and groundwater together to adjust to changing conditions.



Reduce reliance on rivers during drought: Utilize groundwater and recycled water when rivers run low.



Strengthen drought preparedness and response: Plan ahead so communities can act quickly in water shortages.

How Should We Prioritize Watershed Investments?

Flood & Intense Storms

Reduce risk from larger, more intense winter storms



Strengthen flood protection systems: Reinforce levees, dams, and drainage to be more resilient to bigger storms.



Give rivers more room to spread safely: Let floodwaters spread into open areas instead of neighborhoods.



Modernize aging flood infrastructure: Upgrade older dams, levees, and drainage systems to meet current standards and conditions.



Reduce risk to communities in high-hazard areas: Focus protection where flood risk is highest.

Wildfire & Forest Health

Reduce negative fire impacts to the watershed



Reduce wildfire risk in upper watershed forests: Sustainably manage forests to lower the risk of severe fires.



Restore habitat and watershed health: Repair damaged land so rivers and forests function naturally.



Reduce post-fire sediment in rivers and reservoirs: Keep ash and debris out of water supplies after fires.



Protect drinking water sources: Safeguard rivers, reservoirs, and groundwater.

Drought & Water Reliability

Increase water security during longer dry periods



Store more water in wet years: Capture extra water for future dry periods.



Expand groundwater recharge: Move water underground to store it for later use.



Improve water system flexibility: Use surface water and groundwater together to adjust to changing conditions.



Reduce reliance on rivers during drought: Utilize groundwater and recycled water when rivers run low.



Strengthen drought preparedness and response: Plan ahead so communities can act quickly in water shortages.

Extreme Heat & Community Resilience

Reduce impacts of rising temperatures on public health and local economies



Expand access to cooling in vulnerable neighborhoods: Provide cooling centers, shaded public spaces, and other places people can stay safe during extreme heat.



Protect cold-water fisheries: Keep river water cool enough for fish to survive and thrive.



Increase urban tree canopy and green space: Plant trees and expand green spaces to reduce urban heat and cool neighborhoods over time.



Strengthen local emergency preparedness: Improve planning for heat waves and climate emergencies.

BE WATER SMART

Standing Customer Survey

Topics Covered

- Indoor and outdoor water issues
- Topics customer want to learn about most
- High water bills
- Motivation to save water
- Finding and fixing leaks
- Demographics



City of Sacramento tested out survey with their customers - 25 responses



BeWaterSmart.info

Which topics would you like to learn more about? (Check all that apply)				
How to detect leaks in my home	Fixing running toilets and dripping faucets	Improving irrigation efficiency with new nozzles, drip irrigation, etc.	Reducing my water bill	Water-wise landscaping - low water use and native plants
	Fixing running toilets and dripping faucets	Improving irrigation efficiency with new nozzles, drip irrigation, etc.		
How to detect leaks in my home	Fixing running toilets and dripping faucets	Improving irrigation efficiency with new nozzles, drip irrigation, etc.	Reducing my water bill	Water-wise landscaping - low water use and native plants
	Fixing running toilets and dripping faucets		Reducing my water bill	
	Fixing running toilets and dripping faucets	Improving irrigation efficiency with new nozzles, drip irrigation, etc.		
How to detect leaks in my home				
	Fixing running toilets and dripping faucets	Improving irrigation efficiency with new nozzles, drip irrigation, etc.		
How to detect leaks in my home		Improving irrigation efficiency with new nozzles, drip irrigation, etc.	Reducing my water bill	
	Fixing running toilets and dripping faucets		Reducing my water bill	Water-wise landscaping - low water use and native plants
	Fixing running toilets and dripping faucets	Improving irrigation efficiency with new nozzles, drip irrigation, etc.	Reducing my water bill	Water-wise landscaping - low water use and native plants
	Fixing running toilets and dripping faucets		Reducing my water bill	
How to detect leaks in my home	Fixing running toilets and dripping faucets	Improving irrigation efficiency with new nozzles, drip irrigation, etc.	Reducing my water bill	Water-wise landscaping - low water use and native plants
		Improving irrigation efficiency with new nozzles, drip irrigation, etc.	Reducing my water bill	Water-wise landscaping - low water use and native plants
How to detect leaks in my home		Improving irrigation efficiency with new nozzles, drip irrigation, etc.		Water-wise landscaping - low water use and native plants
		Improving irrigation efficiency with new nozzles, drip irrigation, etc.	Reducing my water bill	Water-wise landscaping - low water use and native plants
working		Improving irrigation efficiency with new nozzles, drip irrigation, etc.	Reducing my water bill	Water-wise landscaping - low water use and native plants
		Improving irrigation efficiency with new nozzles, drip irrigation, etc.	Reducing my water bill	Water-wise landscaping - low water use and native plants
		Improving irrigation efficiency with new nozzles, drip irrigation, etc.	Reducing my water bill	Water-wise landscaping - low water use and native plants
		Improving irrigation efficiency with new nozzles, drip irrigation, etc.		Water-wise landscaping - low water use and native plants
How to detect leaks in my home		Improving irrigation efficiency with new nozzles, drip irrigation, etc.		Water-wise landscaping - low water use and native plants
	7	9	15	12

Programming smart/weather based irrigation controller	Installation of more efficient appliances and fixtures	Water conservation tips that are easy to implement	Watering tips for my tree
Programming smart/weather based irrigation controllers		Water conservation tips that are easy to implement	
Programming smart/weather based irrigation controller	Installation of more efficient appliances and fixtures	Water conservation tips that are easy to implement	Watering tips for my tree
	Installation of more efficient appliances and fixtures		Watering tips for my tree
	Installation of more efficient appliances and fixtures		Watering tips for my tree
Programming smart/weather based irrigation controllers			
Programming smart/weather based irrigation controller	Installation of more efficient appliances and fixtures		
		Water conservation tips that are easy to implement	
	Installation of more efficient appliances and fixtures	Water conservation tips that are easy to implement	Watering tips for my tree
	Installation of more efficient appliances and fixtures	Water conservation tips that are easy to implement	
Programming smart/weather based irrigation controller	Installation of more efficient appliances and fixtures	Water conservation tips that are easy to implement	
			Watering tips for my tree
			Watering tips for my tree
Programming smart/weather based irrigation controller	Installation of more efficient appliances and fixtures		Watering tips for my tree
		Water conservation tips that are easy to implement	Watering tips for my tree
Programming smart/weather based irrigation controllers			Watering tips for my tree
Programming smart/weather based irrigation controllers			Watering tips for my tree
			Watering tips for my tree
	Installation of more efficient appliances and fixtures	Water conservation tips that are easy to implement	Watering tips for my tree
Programming smart/weather based irrigation controllers		Water conservation tips that are easy to implement	
Programming smart/weather based irrigation controller	Installation of more efficient appliances and fixtures	Water conservation tips that are easy to implement	Watering tips for my tree
	10	10	12



Spring Irrigation Tune-Up Starts NOW!

- ✓ Fix broken heads
- ✓ Adjust spray direction
- ✓ Shorten run times
- ✓ Check for soggy spots (hidden leaks!)

Small fixes now = **BIG** water savings all summer!

Water Savings Study – Data Collection

- Received data from
 - CalAm, EGWD, CWD, Lincoln, PCWA, Folsom, SCWA, Sacramento & SSWD
- Start work in March, 4-6 months to complete
- Third party review - EKI
- UCANR/UC Cooperative Extension
- Rachio, Land IQ and A&N Technical data available

WE Legislation/Policy - National

- Sign on to Alliance for Water Efficiency's [letter](#) to continue WaterSmart Grant Funding in FY2027.
 - Deadline is May 15th
 - RWA likely to sign on
 - Email office@a4we.org to sign on
- [Shower Act \(H.R. 4593\)](#) – weaken showerhead efficiency standard
 - “Saving Homeowners from Overregulation With Exceptional Rinsing Act”
 - AWE opposes, AWE Sign on letter
 - Passed House, unlikely to move into the Senate
- [Water Conservation Rebate Tax Parity Act \(H.R. 1871\)](#) – eliminate federal taxation of rebates.
 - Potential inclusion in broader federal tax package, timing uncertain
- AWE Data Center Primer with CA Companion Piece



WE Legislation/Policy - CA

- Data Center Bills
 - [AB 1577](#), [AB 2619](#) and [AB 2469](#)
- [Senate Bill 1139](#) (Laird) – AB 1572 Enforcement – “special districts”
 - Changed to Monterey Peninsula Water Management District
- Prop 4 Funding
 - \$75 Million for Water Efficiency, now combined with Watershed Resilience
 - Solicitation not until late 2027
 - Survey to inform solicitation filled out by RWA
 - April 30th webinar – not promising




BE WATER SMART

CR Requirements

- **NFT**

NFT ordinance must be adopted and submitted as part of Conservation Regulation by January 1, 2027 and all NFT on water supplier/city/county properties must stop irrigation with potable water.



CR Requirements

- Mixed Use Meters (MUMs)
 - Option 1: By June 30, 2027, identify all existing commercial, industrial, and institutional (CII) water users associated with large landscapes;
 - Option 2: By June 30, 2029, identify all existing CII water users associated with a large landscape and for which estimated outdoor water use exceeds the water budget
- June 2039 – convert to DIM or in lieu technology

CR Requirements

- Dedicated Irrigation Meters (DIMs)
 - Beginning July 1, 2028 to allow suppliers time to identify and measure DIM accounts and/or install DIMs on CII large landscape accounts. Prior to July 1, 2028, a supplier's CII-DIM water budget will be equal to actual deliveries associated with landscape irrigation as reported to the Board in the electronic annual report (eAR) .

BE WATER SMART

Land IQ DIM Data

Commercial, Industrial and Institutional (CII) Dedicated Irrigation Meter (DIM) Landscape Measurement Study – August 2023

Anticipating the adoption of the UWUO, the Regional Water Authority (RWA) contracted Land IQ to measure its water agencies' (agencies) CII DIM landscape areas, utilizing the 2018 1 ft, 4-band Eagle Aerial Imagery utilized in the LAM Study. Sixteen agencies participated in the study as follows:

1. Carmichael Water District
2. Citrus Heights Water District
3. City of the Folsom
4. City of Lincoln
5. City of Roseville
6. City of Sacramento
7. City of West Sacramento
8. El Dorado Irrigation District
9. Elk Grove Water District
10. Fair Oaks Water District
11. Golden State Water Company
12. Orange Vale Water District
13. Placer County Water Agency
14. Sacramento County Water Agency
15. Sacramento Suburban Water District
16. San Juan Water District

Column	Description
SLA	Identifies if the AOI contained any SLAs such as public swimming pools, recreational turf, community gardens, and cemeteries
Meter1_ID through Meter25_ID	The unique identifier of each meter within the AOI. For AOIs that contain more than one meter, the next sequential meter number will be filled out with the meter unique identifier. This corresponds to the "Meter_UID" values in the DIM file described next.
UpdateFlag	Indicates if a mapping update is needed due to new development, appreciable change in irrigated area or the limited extent of the imagery used.
Ag_Comm	Values of "TRUE" indicate if the agency left a comment within the AOI during it's review process. The actual values of the comments could not be shown here because some AOIs contained multiple comments.
LIQ_Comm	Comment given by Land IQ regarding the need for mapping updates within specific AOIs. There was one agency that noted the desire to pull out parcels already included in DWR LAM study. These were noted as "residential" if they were identical to LAM parcels or "partially residential" if some landscape was included in LAM, but not all.
Total_II	The total irrigated (II) area of the AOI in square feet
Total_NI	The total not irrigated (NI) area of the AOI in square feet
BrSoil_II	The total area of Bare Soil that is irrigated (II) within the AOI in square feet
BrSoil_NI	The total area of Bare Soil that is not irrigated (NI) within the AOI in square feet
Grass_II	The total area of Green Grass / Low Vegetation that is irrigated (II) within the AOI in square feet
Grass_NI	The total area of Green Grass / Low Vegetation that is not irrigated (NI) within the AOI in square feet
Imp_NI	The total area of Impervious Surface that is not irrigated (NI) within the AOI in square feet
Tree_II	The total area of Tree / Shrub that is irrigated (II) within the AOI in square feet
Tree_NI	The total area of Tree / Shrub that is not irrigated (NI) within the AOI in square feet
Water_II	The total area of Water that is irrigated (II) within the AOI in square feet
Water_NI	The total area of Water that is not irrigated (NI) within the AOI in square feet
Total_ND	The total area that was outside of the extent of the 2018 Eagle Aerial Imagery. ND stands for No Data.
Source	Indication of the data creator. In this case all values are "Land IQ, LLC"
ImDate	The name of the imagery used for the mapping. In this case all values are "2018 Eagle Aerial"
Sq_Ft	The area of each classified AOI in square feet

BE WATER SMART

DWR CII Imagery

CII-LAM-LUCD Schedule (Project Status and Anticipated Delivery Dates) Updated March 26, 2026

Hydrologic Region	Blocks in Hydrologic Region (No.)	Define Analysis Area (No. of Blocks)	Completed Analysis (No. of Blocks)	Suppliers in Hydrologic Region (No.)	Suppliers Completed (No.)	Start of Data Deliveries	Data Deliveries Completed by
Central Coast	16	16	7	31	6	Fall 2024	Winter 2026
Colorado River	24	24	10	15	-	Spring 2026	Winter 2026
North Coast	5	5	4	13	5	Summer 2026	Winter 2026
North Lahontan	3	2	1	4	1	Winter 2025	Spring 2026
Sacramento River	35	32	22	38	12	Summer 2025	Fall 2026
San Francisco Bay	33	33	33	49	37	Fall 2024	Spring 2026
San Joaquin	20	20	15	30	17	Summer 2025	Summer 2026
South Coast	91	90	86	176	107	Fall 2024	Winter 2026
South Lahontan	19	19	8	17	3	Summer 2026	Fall 2026
Tulare Lake	21	21	14	30	18	Fall 2025	Fall 2026
Total	267	262	200	403	206		

Notes: Hydrologic region map is available at <https://www.water.ca.gov/regionscale>

Schedule is informational only and may change without notice; wholesale urban retail water suppliers are excluded.

Six new blocks were added since the Oct 31, 2024 webinar.

- Anyone received imagery yet? FOWD, OVWC, Roseville, SJWD, CHWD
- Remaining suppliers should receive data between now and Fall 2026.
- <https://water.ca.gov/programs/water-use-and-efficiency>

BE WATER SMART

CalWEP LAM Explorer

The CalWEP LAM Explorer Powered by WaterView helps urban water suppliers meet California's *Making Conservation a Way of Life* regulations. This dataset provides essential information for both the [residential outdoor](#) and [CII-DIM water use standards](#), identifying irrigated areas and landscape types to support accurate water budgets. LAM data will be a key resource for tracking, reporting, and managing outdoor water use efficiently.

CalWEP is providing access to the 2020 Hexagon Imagery and viewing the CII-LAM-LUCD data through their custom developed tool, the CalWEP LAM Explorer. Additionally, the CalWEP LAM Explorer will house and make available the final the Residential LAM datasets (provided by DWR in 2021) with the accompanied source 2018 imagery.

Thanks to Eagle Aerial Solutions for their dedication to data-driven water efficiency and ongoing support to make this tool free and accessible to all.

Supplier specific deliverables:

1. Geospatial datasets (GIS) in two formats; both formats have identical data:

1. Shapefiles, and
2. Geodatabase (*.gdb) containing data as feature classes.

2. Reports (*.pdf):

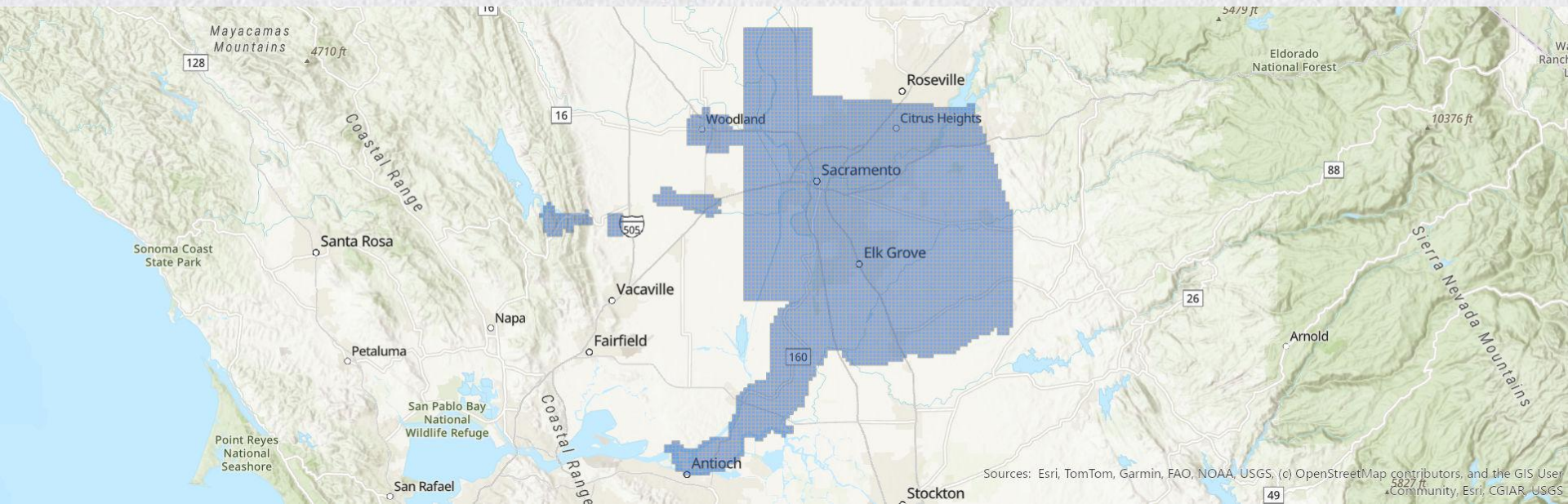
2. CII-LUCD / Residential Parkways Irrigated Vegetation Analysis Report: summary report describing methods, source data, results, and validation.
3. README file: description of attribute values provided in the GIS datasets.
4. CII-LAM information sheet: users guide for people new to or unfamiliar working with LUCD or LAM GIS datasets.

DWR contact Scott Hayes at Scott.Hayes@water.ca.gov.

BE WATER SMART

SACOG Imagery

- Spring 2027 – leaf off (maybe sooner?)
- \$230/sq mile for new area, heavy discount for existing area
- 4 band
- Contact with SACOG ASAP if interested
 - Pete Atwood patwood@sacog.org



BE WATER SMART

Badger/PCWA/RWA Meter Training

Date: April 22nd (same day/location as the WEP public outreach meeting)

Time: 12:30 -3:30 pm (Lunch served at noon)

Location: RWA Office located at 2295 Gateway Oaks Drive, Suite 100, Sacramento, CA

Agenda:

Welcome/Introductions

Small Meters (PD & Ultrasonic)

Large Meters (Mechanical & Ultrasonic)

Clamp-on Ultrasonic/Mag Meters

Reading Technology AMI/AMR

Water Quality, Pressure Management, Acoustic Leak Detection

Q & A

CEUs: 3 CEUS for State Water Board Distribution and Treatment approved



BeWaterSmart.info

BE WATER SMART

Landscape Trainings

- **Irrigation 101-201 Training– TABLE FOR NOW**
- **Landscape Plants/Landscape Design with Cheryl Buckwalter**
 - August 20th or 27th (Thursdays) 10-noon with lunch?

- **CLIA Training**

DATE AND TIME:

OCTOBER 21ST & 22ND

8 AM – 5 PM Both days

LOCATION:

City of Sacramento Department of Utilities

1391 35th Ave, Sacramento, CA 95822

COST:

Course Only: \$495

Course + IA Manual: \$585

REGISTRATION:

<https://irritechtraining.com/event/landscape-irrigation-auditor-training-3/>

QWEL Tentative Dates

October 5, 2026

October 7, 2026

October 12, 2026

October 14, 2026 – Audit Day

October 19, 2026

October 21, 2026

October 26, 2026 - Exam



BeWaterSmart.info

Reporting Update

- **Submit by July 1, 2026**

- Urban Water Management Plans
 - RWA to provide regional information for outreach and programs
- Updated Pressure management WL Questionnaire
- DWR Annual Supply and Demand Assessment

- **Submit by January 1, 2027**

- Urban Water Use Objective Report (DWR)
 - Disclosable Building - Update
 - Spreadsheet and the utility certification
- Water Loss Audit (DWR)
 - Audit spreadsheet, validator certification, utility certification

- **By January 1, 2027**
 - NFT
 - Update ordinance and policies to reflect AB 1572 requirements
 - Submit copy as part of Urban Water Use Objective Reporting
 - Communicate NFT requirements to customers
 - All government and utilities properties – not waterings NFT
 - **“Annually demonstrate compliance with its objective”**
- **By June 30, 2027/July 1, 2027**
 - Classify all CII accounts (submitted July 1, 2028)
 - CII Classification Option 2 (submitted July 1, 2028)
 - CII MUM Option 1 (submitted July 1, 2028)
 - Updated Asset Management Questionnaire
 - DWR Annual Supply and Demand Assessment



CII Classification AI Tool – MEA/CalWEP

- Account name and address only data required
 - Automated, leveraging name matching, AI, and APIs to categorize accounts
- QAQC and some manual processes, check 5%
- Average \$2 per CII connection, min. \$1,000
- Receive spreadsheet with full classification and summary to plug into SWB reporting form
- Interested?
 - Contact merbeznik58@gmail.com – open to all
 - Through CalWEP julia@calwep.org + \$200

BE WATER SMART

Additional Information

- Tree Speaker from Debby

Andrew Belingheri

andrew.belingheri@husqvarnagroup.com

Husquvarna

702-600-8911

- EBMUD NFT Tree Watering Webinar
- Brewers Guild Meeting Recap



tea **BREAK TIME** cups

NFT Round Robin Discussion and Chart

- Round Robin Chart
 - Updated ordinance yet? Yes or No? Estimate Time?
 - Where in ordinance/policy structure?
 - Customer outreach – website, mailers, etc.?
 - What/where Enforcement?
- Tracking Template
- William to help!

NFT Tracking Template

Data Inputs	Details/Notes
Customer Identification (account or proxy account number)	Choose account number or another identification number.
Customer Classification	One of the 22 required CII classification categories required for the conservation regulation. Could do dropdown menu?
Street Address/Parcel Number	Choose street address or parcel number.
Landscape Square Feet	Square feet of total landscape area, if available.
NFT Square Feet	Square feet of NFT, if available. Input 0, if not applicable.
NFT or FT Confirmed by Customer	Choose NFT, FT or NA. Could make dropdown menu?
Customer NFT or FT Notes	Notes provided by customer to justify NFT or FT designation.
NFT or FT Confirmed by Supplier	Choose NFT, FT or NA. Could make dropdown menu?
Supplier NFT or FT Notes	Notes provided by supplier to justify NFT or FT designation.
Customer Contact Name	Customer name
Customer Contact Email	Customer email
Customer Contact Phone	Customer phone
Customer Contact Notes	Log of customer interactions including calls.
Enforcement Actions	Log of any enforcement actions including education and fines.
Property Compliants	Log of any complaints on property from other customers, state, etc.
Entry Supplier Staff Name	Name of supplier staff that entered customer into spreadsheet.
General Notes	General notes about the property, catch all for any other pertinent information.
Compliance Status	Choose In Compliance or Not in Compliance. Could do a dropdown menu?
State Self-Certification Status	Choose Required, Submitted, or NA. Could do a dropdown menu?
Action Needed	List any actions needed for follow up with customer or property.

NFT Enforcement Messaging

Regional Message

California law is phasing out the use of drinking water on nonfunctional lawn at commercial, industrial, institutional, public properties, and HOA common areas. This requirement applies statewide.

Because the law is implemented at the local level, each water supplier must incorporate the law's requirements into its own policies and ordinances by January 1, 2027.

- Enforcement of these requirements will vary depending on where you're located and may include customer education and monetary fines.
- Check with your local water provider for details.

What doesn't vary is the law itself: The requirement to stop irrigating nonfunctional lawn is statewide.

- Taking time now to understand which areas of your landscape may be affected—and getting familiar with the rebates, tools, and resources available—can help your organization prepare and make the transition smoothly.

For regional information about the law, definitions, timelines, and planning tools, please visit BeWaterSmart.info/nft and nonfunctionalturfca.org.

NFT Enforcement Messaging

Water Supplier Message

California law is phasing out the use of drinking water on nonfunctional lawn at commercial, industrial, institutional, public properties, and HOA common areas. This requirement applies statewide.

As your water supplier, we are responsible for incorporating the law's requirements into our policies and ordinances, which may also include a compliance and enforcement process.

- Those details are still being finalized and must be in place by January 1, 2027.
- Because each water supplier must set its own policies, compliance and enforcement may look different for other water suppliers.

Even as we work through these details, the underlying requirement remains the same: Potable (drinking) water can no longer be used to irrigate nonfunctional lawn CII and HOA common areas.

- Now is a good time for CII and HOA customers to understand which areas of your landscape may be affected and to become familiar with the tools and resources available to help.
- Talk about your rebate programs.

For information about the law, definitions, timelines, and planning tools, you can visit BeWaterSmart.info/nft or nonfunctionalturfca.org. Or your resources.

- We'll continue to share updates on our website as our local approach takes shape.

BE WATER SMART

2026 RWE PAC Meetings

Dates	Supplier Host
January 13, 2026	City of Sacramento
March 10, 2026	SSWD
May 12, 2026	CWD
July 14, 2026	SCWA
September 8, 2026	SJWD
November 10, 2026	Roseville
December 8, 2026	You know where!
January 12, 2027	City of Sacramento?

Holiday Social: @ The Old Spaghetti Factory, Rancho Cordova, 11:30 am – 1:30 pm. All water efficiency staff are invited.





Announcements & Events